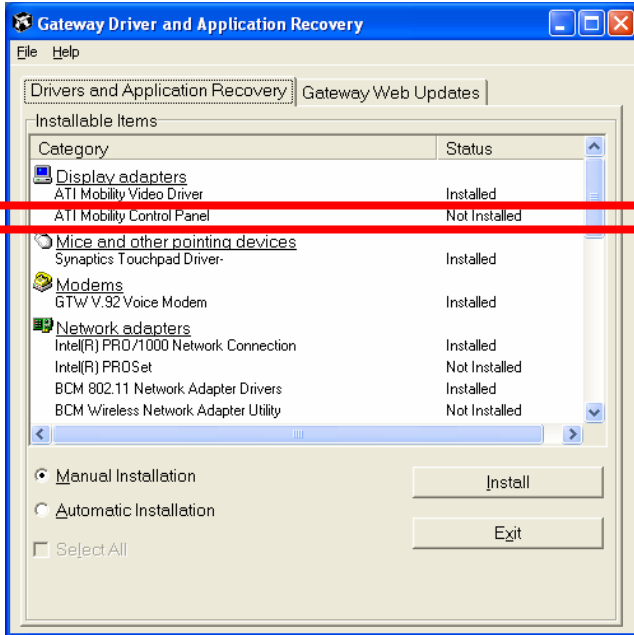


# Instructions to Setup Gateway 450 Laptop With Projector

If you are using a new Gateway 450 laptop, and the image is not being projected properly (i.e. bottom part of screen is cut off), do the following:

## **Step 1: Install the ATI Mobility Control Panel**

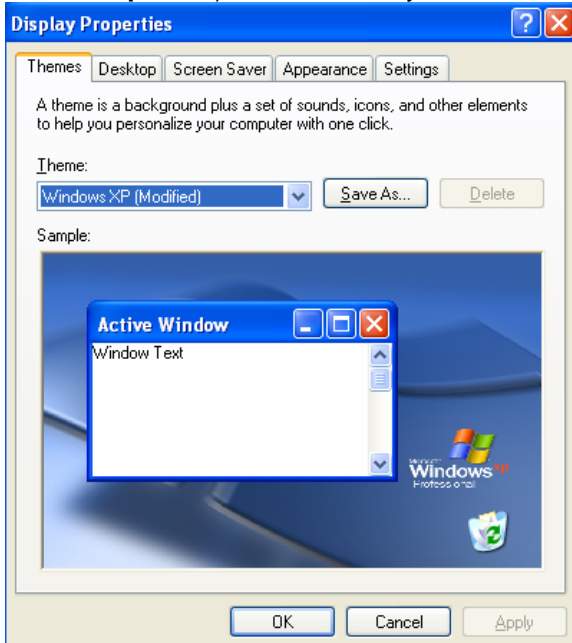
1. Close all programs and files
2. Put in the Applications & Drivers CD (burgundy colored CD that came with your new laptop) in the CD drive. Wait until the Gateway Driver and Application Recovery window appears, select **ATI Mobility Control Panel** and click **Install**.



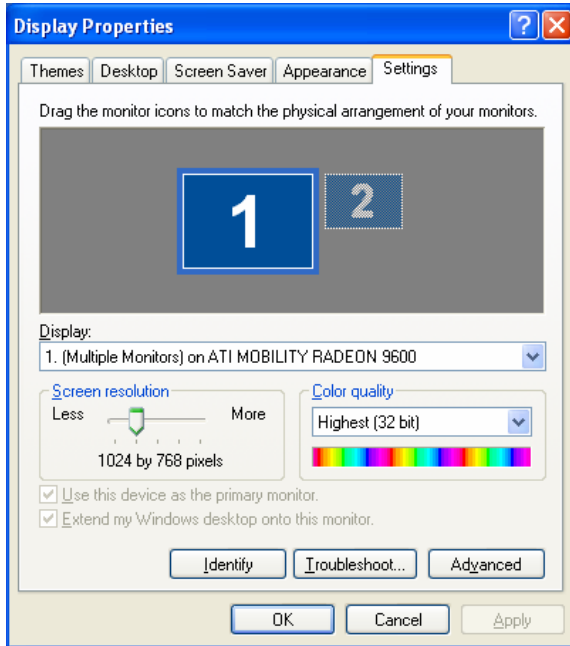
3. Choose all defaults during the installation and click **Finish** when done. Computer will be restarted.

## **Step 2: Configure the Display Settings for the Projector**

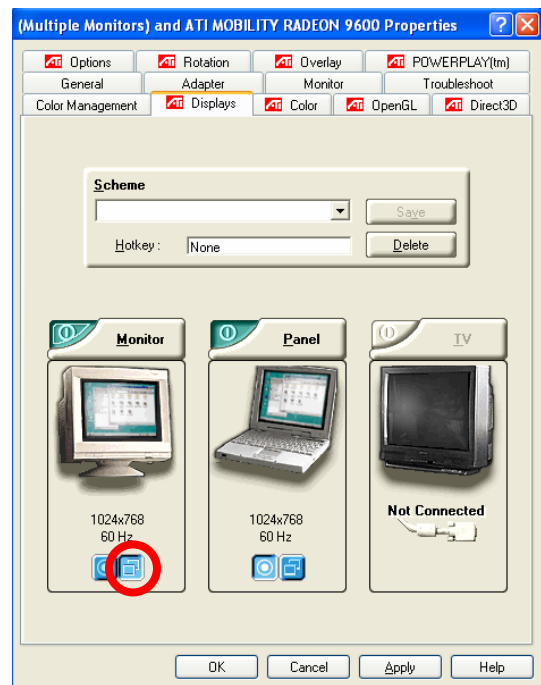
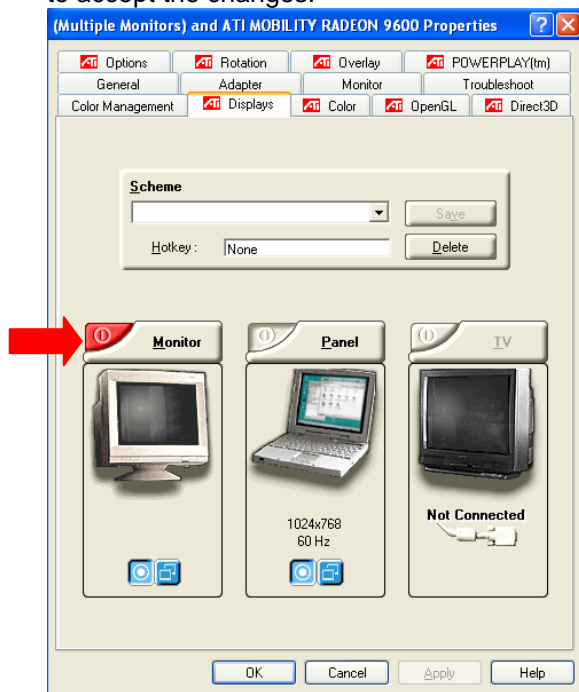
1. Connect the projector to your laptop
2. Click **Start, Control Panel, Display** (or Right-click your mouse on an empty space on your desktop, select **Properties**). This will take you to the **Display Properties** window.



- Click the **Settings** tab. If the Screen Resolution is greater than 1280 x 1024, decrease it so that it's no greater than 1280 x 1024 and click **Apply**. Make sure the #1 monitor is selected and click the **Advanced** button.



- Click the **Displays** tab. If the button next to **Monitor** is **red**, click the button. If the button on the right-hand side under **Monitor** is not pushed in (circled in **red**), click the button to push it in. Click the **Apply** button and the display should appear on both your laptop and the projector. If it works, choose to accept the changes.



Your laptop should now be set up to work with a BSU projector. You should not need to set it up again.