

CONNECTING TO BSU WIRELESS

Connecting to the BSU wireless network requires a username and password, and proper configuration of your computer. Please contact Technical Support in Memorial Hall, Room 11 with a current, valid BSU ID to obtain your username and password.

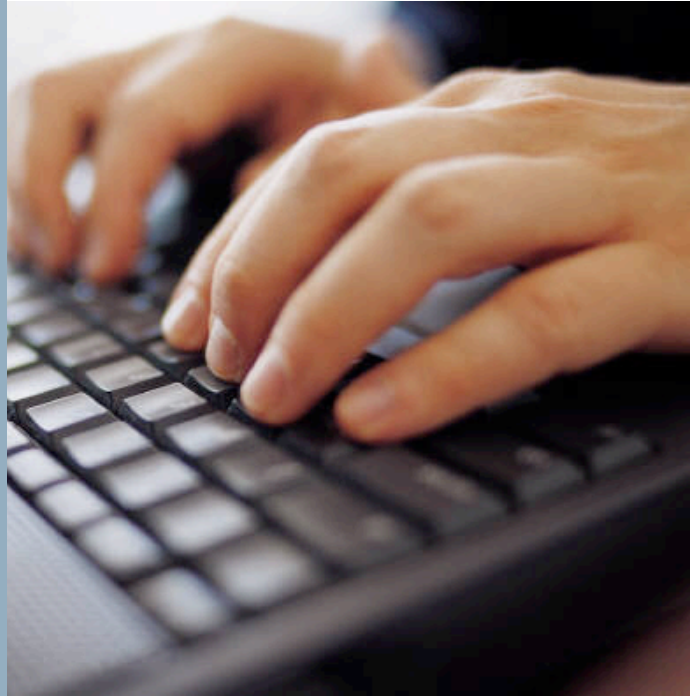
Using this wireless account requires you to abide by the following policies:

BSU Wireless Policy

http://www.bemidjistate.edu/ITS/wireless/Wireless_policy_draft_3.pdf

MnSCU Acceptable Use of Computers and Information Technology Resources

<http://www.mnscu.edu/board/procedure/522p1.html>



There are 5 main steps to getting connected to Bemidji State university's secure wireless network. You must be connected to BSU's wired network to configure the wireless access.

Requirements:

Windows XP with SP 2 installed,
Windows Firewall enabled
802.11 wireless adapter, A/B/G supported

- Downloading and installing BSU Certificate Authority Certificate
- Download Microsoft Windows XP Hotfix 885435 (PEAP Authentication Fix)
- Creating the Preferred Wireless Network
- Remove Windows EAP login information (optional)
- Change BSU Wireless password

♦ Downloading and installing BSU Certificate Authority Certificate

- Open Internet Explorer and type in the following:

<http://wireless.bemidjistate.edu/>

- Click on the first link to download and install BSU Certificate Authority certificate to bring up the save dialog box.

- Choose **Open** to show the certificate.
- On the general tab click on **Install Certificate...**
- At **Certificate Import Wizard** click **Next**.
- On the **Certificate Store** choose **Place all certificates in the following store**. Click on **Browse**.
 - Then select **Certificate Store** dialog box will come up. Click **Trusted Root Certification Authorities** and then click **OK**.
 - At the **Certificate Store, Trusted Root Certification Authorities** should be there. Click **Next**.
 - At **Completing the Certificate Import Wizard**, click **Finish**.
 - Windows will ask to confirm the installation of the certificate. Click **Yes**.
 - Click **Ok** at the **Certificate Import Wizard** notification that the import was successful.
 - Click **Ok** in Certification details dialog box.

♦ Downloading Microsoft Windows XP Hotfix 885435

- Open Internet Explorer and type in the following:

<http://wireless.bemidjistate.edu/>

- Click **Run** at the **File Download – Security Warning** dialog box.
- Click **Run** again on the second dialog box asking if you want to **Run the software Windows XP hotfix (kb885435)**.
- This will start the **Windows XP KB885435 Setup Wizard**. Click **Next** on the **Welcome screen**.
- Check the **Agree** box to accept the license agreement, and then click **OK**.
- This will update the system.
- Windows will notify you when the installation is complete, click **Finish**.

♦ Create the Preferred Wireless Network

- Click on **Start** and **Connect To**.
- Select **Show all Connections** and within the connection folder right click on **Wireless Network Connection** and choose **Properties**.
- Click on the **Wireless Networks** tab at the top and then click on **Advanced**.
- On the **Advanced dialog box** select either of the first two selections
- Ensure that **Automatically connect to non-preferred networks** is unchecked, click **Close**.
- Under **Preferred Networks**: click **Add**, bringing up the **Wireless Network Properties** dialog box.
- On the **Association** tab click in the **Network name (SSID)**: enter **BSU**
- Select **WPA** for **Network Authentication**.
- Select **TKIP** for **Data encryption**.
- Click on the **Authentication** tab.
- Select **Protected EAP (PEAP)** for **EAP type**,
- Uncheck both checkboxes and click **Properties**.
- In the **Protected EAP Properties** dialog box uncheck **Validate server certificate**.
- Next to **Select Authentication Method**: click

Configure

- Uncheck the box in there and click **OK**.
- Click **OK** on the **Protected EAP Properties** box.
- Select the **Connections** tab.
- Uncheck **Connect when this network is in range**, click **OK**.
- **BSU (on Demand)** should now be listed as a preferred network in your **Preferred Network** list.
- Click **OK**

- Double-click **Wireless Network Connection** to view available networks.
- Double-click on **BSU** network to connect.
- Windows will ask you to please wait while connecting to BSU network.
- Once the computer associates with the wireless network, you will see a **popup in the system tray** (bottom right of your screen).
- Click the popup (not on the actual icon in the system tray).
- Enter your **username** and **password**. Leave **Logon domain** blank. Click **OK**.
- The entry for BSU will show the connection status: Validating identity -> Attempting to authenticate -> Acquiring network address -> Connected.
- Close **Wireless Network Connection** window.

♦ Remove Windows EAP login information (optional)

Windows remembers your wireless credentials by storing the encrypted information in the Windows Registry. Each Windows user's credentials are stored separately. That's good in that you won't have to type in your username and password each time you connect to the wireless network. That's bad if you share the same Windows login with another user. It would allow them access the wireless network by using your account!

To remove your wireless credentials for the Windows account that you're logged into, double-click **RemoveEAPinfo.reg**. This will **only** remove the Registry keys that store the encrypted login information.

♦ Change BSU Wireless password (SSL Secure)

Information Technology Services will supply you with a username and password. Please change the password.

- Open Internet Explorer and type in the following: <http://wireless.bemidjistate.edu/>
- Click on the last link to change your password.
- This will launch a Cisco Secure site.
- Log in with your current username and password
- Enter your current password and then enter a new password, and then confirm new password.
- Click **Submit** and you will get a message that your password was changed.
- Click **logout**.