

## CONNECTING TO BSU WIRELESS

Connecting to the BSU wireless network requires a username and password, and proper configuration of your computer. Please contact Technical Support in Memorial Hall, Room 11 with a current, valid BSU ID to obtain your username and password.

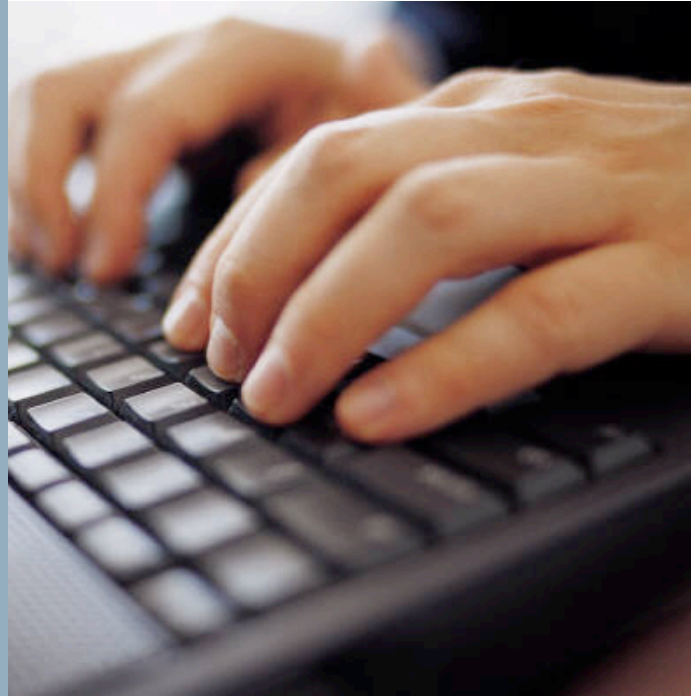
### Using this wireless account requires you to abide by the following policies:

BSU Wireless Policy

[http://www.bemidjistate.edu/ITS/wireless/Wireless\\_policy\\_draft\\_3.pdf](http://www.bemidjistate.edu/ITS/wireless/Wireless_policy_draft_3.pdf)

MnSCU Acceptable Use of Computers and Information Technology Resources

<http://www.mnscu.edu/board/procedure/522p1.html>



### *Configuring your Macintosh computer (OS 10.2+ and Airport 4.2 installed)*

- \* Click on the Airport icon in the upper right corner, choose Open Internet Connect
- \* Click File, choose New 802.1X connection
- \* Choose Edit Configuration
  - o Rename description to BSU (If there are already settings on the left, choose to add a new one)
  - o Network port should be AIRPORT
  - o DO NOT enter or save Username and Password here for security purposes
  - o Wireless network – use drop down and select BSU
  - o Authentication – uncheck everything other than PEAP – Click OK
  - o Do not click Connect – close box
- \* Click the Airport icon, choose BSU
- \* Sign on using username and password provided by Technical Support, Memorial Hall, Room 11
- \* The first time you should see Verify certificate, choose Always Trust

### Change your BSU Wireless password

- \* Go to <http://wireless.bemidjistate.edu/>
- \* Click on Change BSU Wireless password (SSL Secured) This will launch a Cisco Secure site.

- \* Log in with your current username and password
- \* Enter your current password and then enter a new password, and type again to confirm new password.
- \* Click Submit and you should see the message "Password Changed Successfully"
- \* Click logout

### More information using Wireless on a Mac

Open Internet Connect - sometimes the Airport Icon shows gray but still connects.

To log off Wireless other than shutting down, go to Internet Connect, choose 802.1X and click Disconnect.

If computer goes to sleep, it will disconnect but will remember log in information and reconnect when computer wakes up.

No need to use "interference robustness"