



Bemidji State University Wireless Instructions

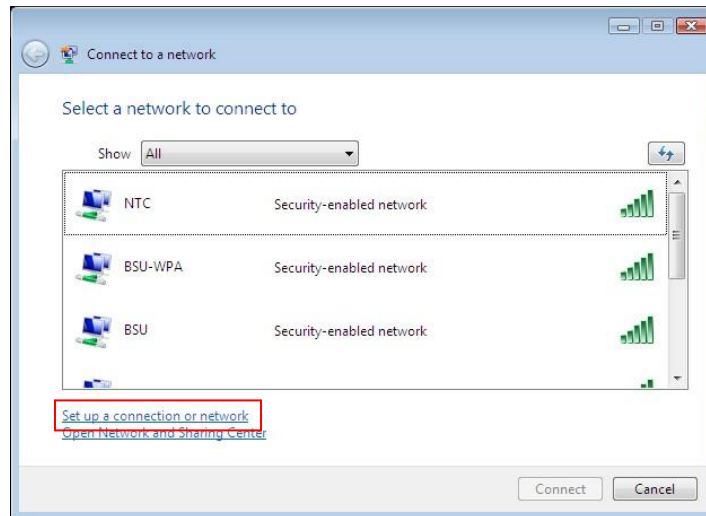
Faculty/Staff Windows Vista

Connecting to BSU wireless network requires your Directory username and password, and proper configuration of your computer. Please contact Technical Support in Deputy 161 with a valid BSU ID to obtain your username and password or receive assistance in setting up wireless for you.

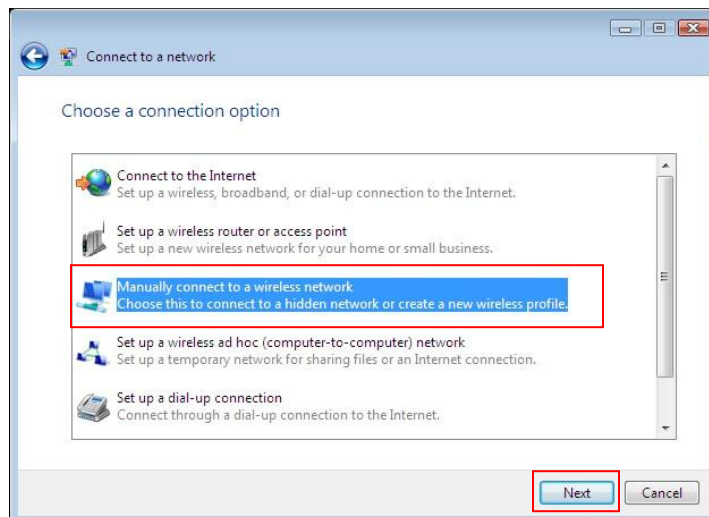
By connecting to BSU wireless you are agreeing to abide by the following policy:

MnSCU Acceptable Use of Computers and Information Technology Resources
<http://www.mnscu.edu/board/policy/522.html>

1. Click on **Start > Connect to** and click on **Set up a connection or network**.



2. Under **Choose a connection option** choose to **Manually connect to a wireless network** and click **Next**.



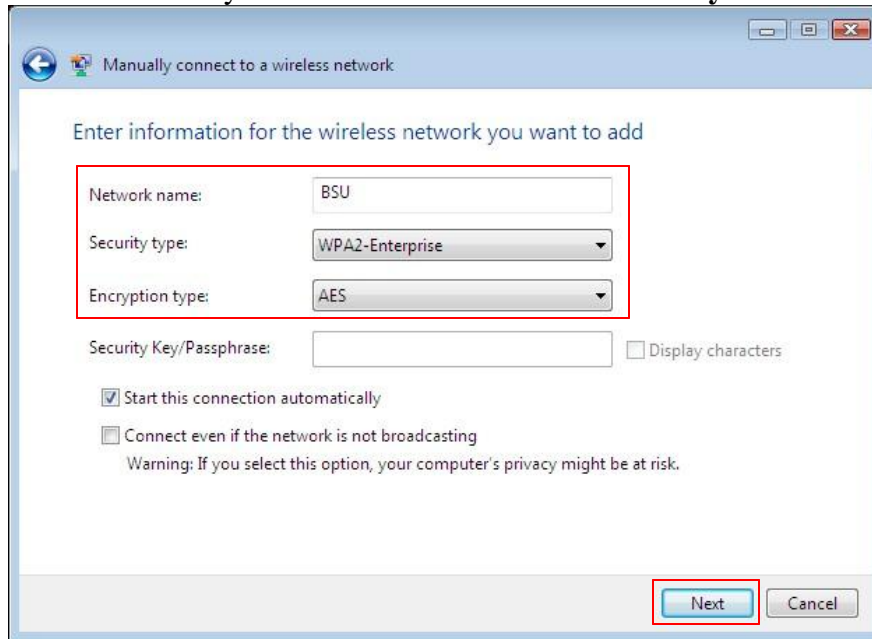
3. On the **Manually connect to a wireless network** dialog box enter the following information.

Network name: BSU

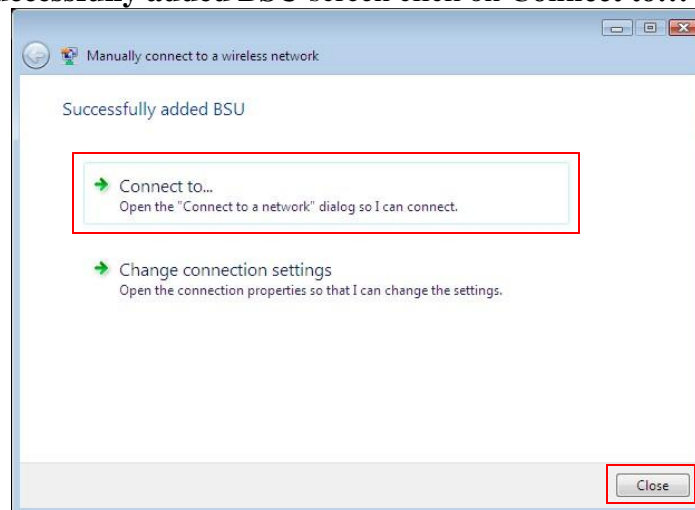
Security type: WPA2-Enterprise

Encryption type: AES

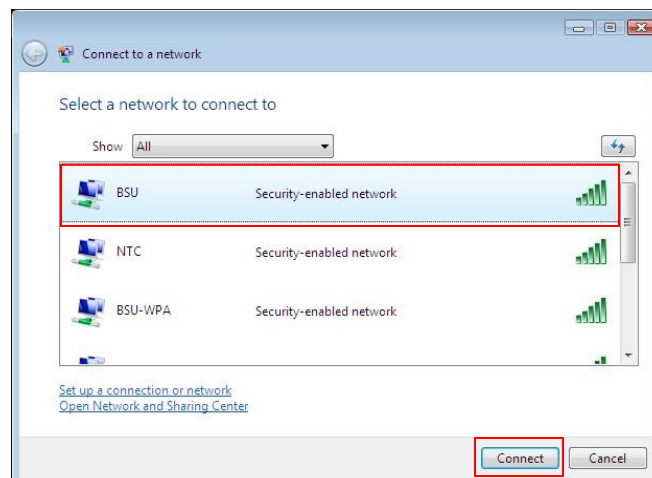
Be sure there is a check mark by **Start this connection automatically** and click **Next**



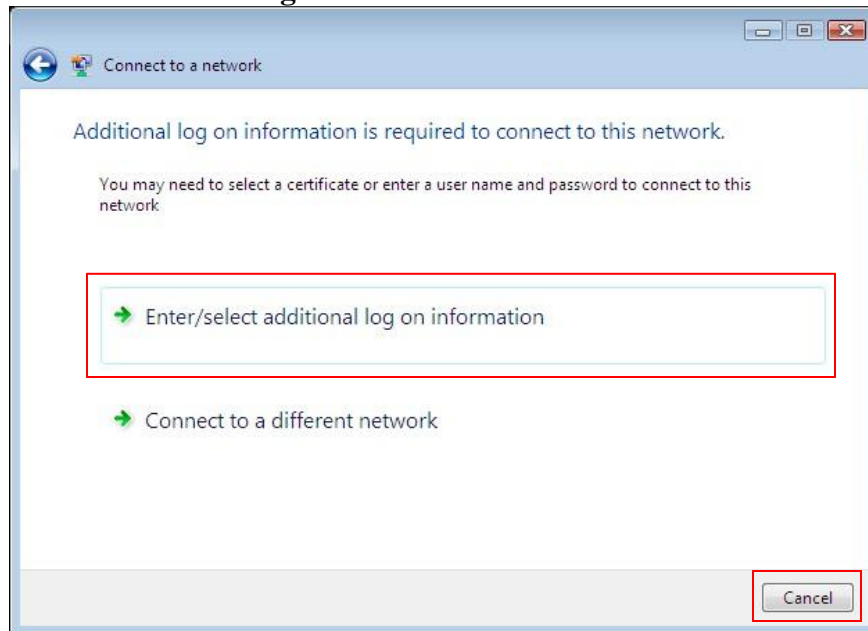
4. When you see the **Successfully added BSU** screen click on **Connect to...**



5. This will then bring you back to the **Connect to a network** dialog box. Click on **BSU** and then click **Connect**



6. The **Additional log on information is required to connect to this network** dialog box will appear. Click on **Enter/select additional log on information**.



7. You will then be prompted to **Enter Credentials**. The username and password required here is your **directory** password (also known as your MyBSU/Portal/Novel login) Leave the **Logon domain**: blank.



8. Click **OK** at **Validate Server Certificate** to complete the installation & connect.

