



Bemidji State University Wireless Instructions

Student Windows Vista

Connecting to BSU wireless network requires your Directory username and password, and proper configuration of your computer. Please contact Technical Support in Deputy 161 with a valid BSU ID to obtain your username and password or receive assistance in setting up wireless for you.

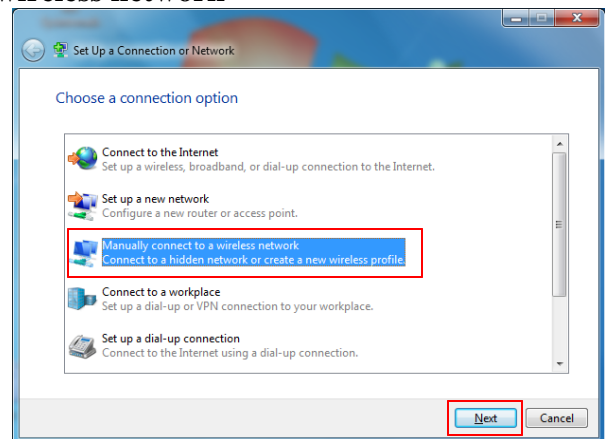
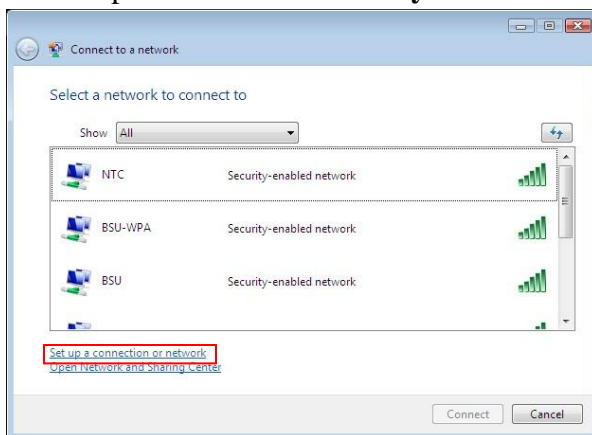
By connecting to BSU wireless you are agreeing to abide by the following policies:
Student Network Use Policy

http://www.bemidjistate.edu/students/handbook/policies/campus/network_use.cfm

MnSCU Acceptable Use of Computers and Information Technology Resources

<http://www.mnscu.edu/board/policy/522.html>

1. Click on **Start > Connect to** and click on **Set up a connection or network**. Under **Choose a connection** option click on **Manually connect to a wireless network**

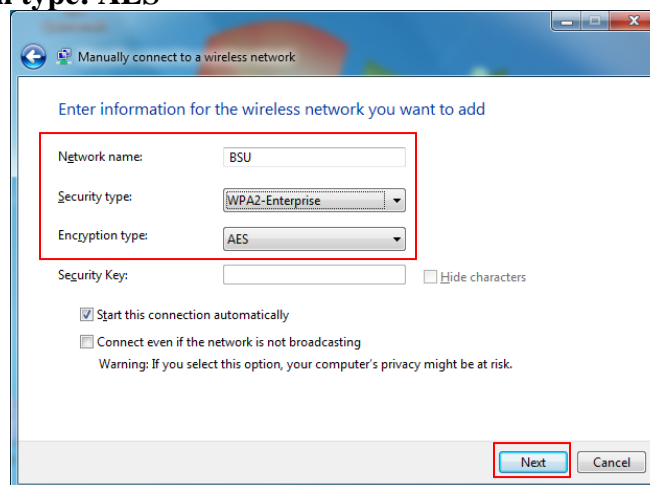


2. At the **Manually connect to a wireless network** dialog box enter the following information and verify **Start this connection automatically** is checked and click **Next**

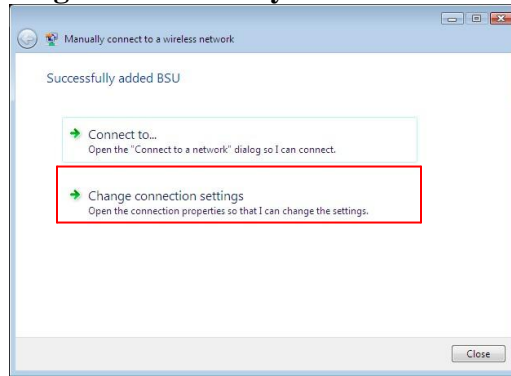
Network name: BSU

Security type: WPA2-Enterprise

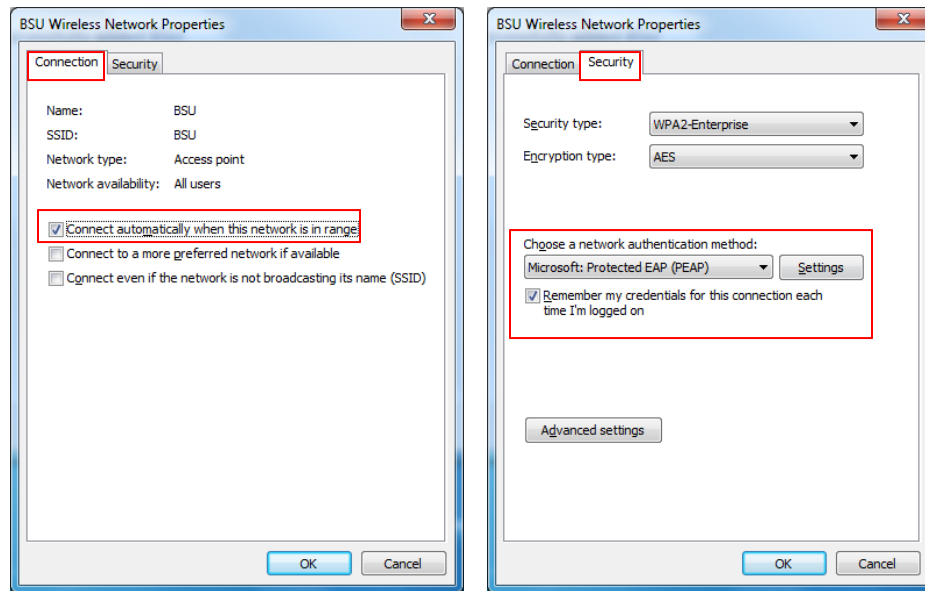
Encryption type: AES



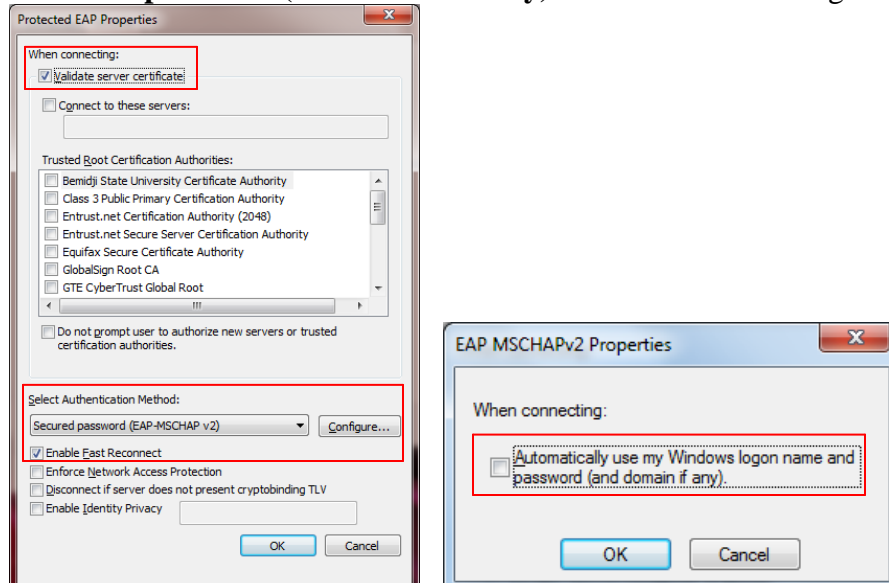
3. Click on **Change connection settings** at **Successfully added BSU**



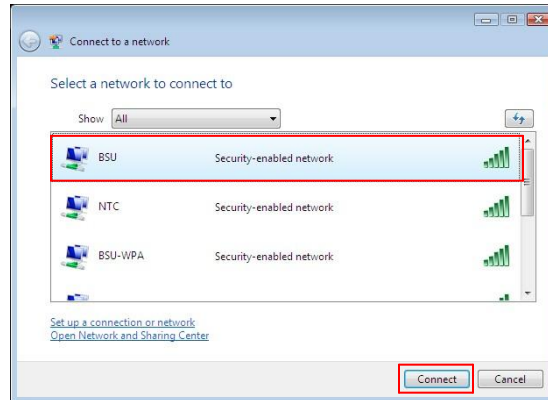
4. At the **BSU Wireless Network Properties** dialog box on the **Connection** tab verify **Connect automatically when this network is in range** is checked. Click on the **Security** tab and under **Choose a network authentication method:** it should be **Microsoft: Protected EAP (PEAP)**. Verify there is a check mark by **Remember my credentials for this connection each time I'm logged on**. Click on **Settings**



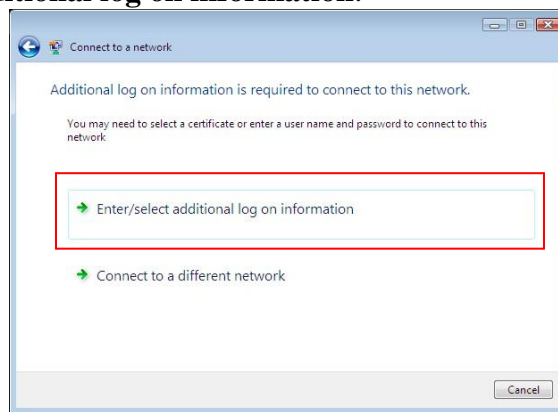
5. Verify **Validate server certificate** is checked. Under **Select Authentication Method:** it should be **Secured Password (EAP-MSCHAPv2)**, verify **Enable Fast Reconnect** is checked and click **Configure...** On the **EAP MSCHAPv2 Properties** dialog box **UNCHECK Automatically use my Windows logon name and password (and domain if any)**. Click **OK** and **OK** again.



6. Click **OK** out of **BSU Wireless Network Properties** box and try to connect to BSU.
7. This will then bring you back to the **Connect to a network** dialog box. Click on **BSU** and then click **Connect**



8. The **Additional log on information is required to connect to this network** dialog box will appear. Click on **Enter/select additional log on information**.



9. You will then be prompted to **Enter Credentials**. The username and password required here is your **directory** password (also known as your MyBSU/Portal/Novel login) Leave the **Logon domain:** blank.



10. Click **OK** at **Validate Server Certificate** to complete the installation & connect.

