

BSU Horizons

October 1, 2, 3, 1999

Homecoming "Rock, Roll and Reminisce!"
BSU Alumni Association Annual Meeting
Annual Alumni Association Honors Luncheon
BSU Beavers vs. Concordia College of St. Paul
Fifth Quarter Social & Silent Auction!
1974 & 1959 Class Reunions
Carl O. Thompson Memorial Concert

October 27, 1999

Alumni-BSU Career Day

November 14, 1999

Metrodome Classic, Beavers vs. Wisconsin-Stevens Point, 2:30 P.M. at the HHH Metrodome in Minneapolis; Evergreen Club (Young Alumni) Social; Alumni Association Reception

December 3, 4, 5, 10, 11, 1999

Madrival Dinners, Bemidji

December 4, 1999

Alumni Association Board Meeting, David Park House, Bemidji

January 29, 2000

BSU Snow Ball, Hobson Memorial Union Beaux Arts Ballroom

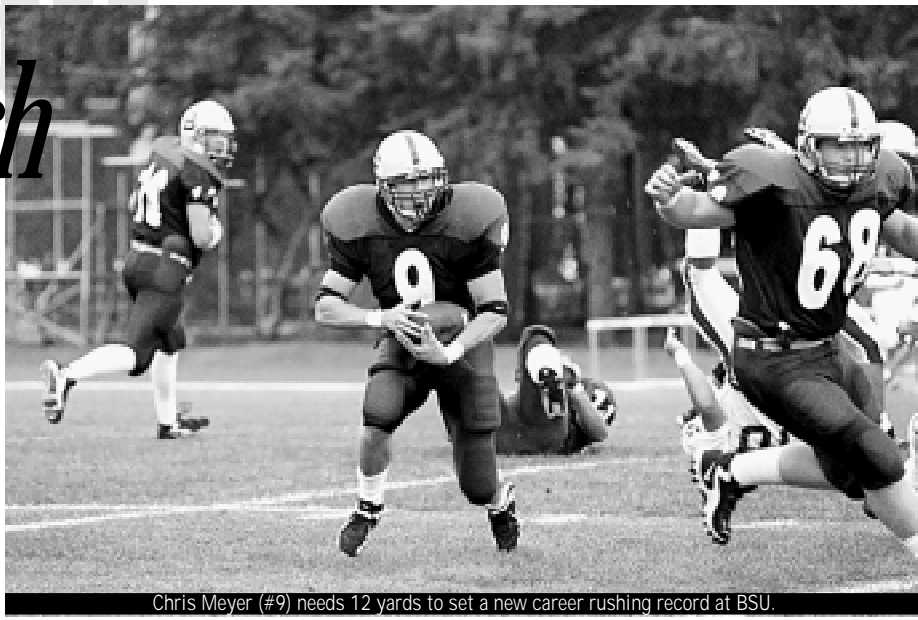
February 18, 2000

BSU Alumni Reception in conjunction with Minnesota Music Educators Association Midwinter Clinic, Minneapolis Hilton & Towers

March 12, 13, 2000

Annual BSU Winter Rendezvous, Laughlin, Nevada

Beaver Football A Team to Watch



Chris Meyer (#9) needs 12 yards to set a new career rushing record at BSU.

There hasn't been this much excitement surrounding a Bemidji State University football team since ...

Well, there may never have been this much excitement when it comes to BSU football.

The 1999 edition of the Beaver grid squad gives every indication that it plans to close out the decade and century with a season to remember.

Back are 10 starters from an offensive unit that set school records by averaging nearly 220 passing yards and almost 400 total yards per game. On the defensive side, the BSU crew is anchored by a *Sporting News* preseason All-America lineman and features six returning starters from 1998.

After just three seasons under head coach Jeff Tesch, the Beavers broke out of a last place Northern Sun Intercollegiate Conference (NSIC) finish to place third in the league with a 4-2 record.

"I came to Bemidji State because it was a sleeping giant waiting for something to happen," said Tesch, who was the top assistant coach at the University of North Dakota before coming to BSU. "I had been involved in other programs where we helped turn things around and it was a new challenge. At Montana State we were 1-10 the first year and went on to win a national championship. People forget that the first two years at UND we finished 2-8-1 and 3-8-1. We came in as a staff, worked hard with the players, and turned it around."

Tesch noted several factors are needed in turning a football program around. Support from the administration in terms of scholarships, facilities and improvements were high on his list. He also felt that attracting a quality coaching staff was important, and pointed out that his top assistants have been together for three years to provide the consistency required in a winning program.

"The last thing is to convince the kids to be better," he added. "Lifting weights, running more, and spending more time watching film are all part of the mix."

That formula helped BSU complete a 6-4 overall season in 1998

when individual and team standards were left tattered and broken. If the current Beaver contingent ends up above .500, it will mark the first time since 1985-86 that Bemidji State would notch back-to-back winning years, a feat that has happened only seven times in school history.

The Beavers certainly have the cast to bring about another milestone in football history.

Chris Meyer, a senior halfback from East Grand Forks, set new standards for single season rushing with 1,466 yards and single game scoring with six touchdowns; ranked in the top five in NCAA-II rushing all season; and needs only 12 yards to set a new record for career rushing. Tesch described him as a tremendous inspirational leader and a durable rusher who gets the tough yards.

Jay Hanson, senior defensive end from Sartell, broke single game sack (four) and season sack records (16.5) as a junior; listed by *Sporting News* as a preseason All-America pick. Tesch said he uses his strength and quickness to make the big plays on defense.

Ben Morie, senior quarterback from Rohnert Park, CA, became the record holder for pass completion percentage in a single season by connecting on 124 of 233 attempts, a 55.6 success ratio; makes the offense two dimensional, forcing defenses to be leery of passing and freeing up the running game. Tesch felt that the addition of Morie was a big factor in the turnaround and that he is a working man's quarterback - not the strongest, not the fastest, but one with moxy, poise and a feel for the game that can lead to wins.

Other returning All-NSIC performers include **Jason Leden**, sophomore wide receiver from Stevens Point, WI; **Ben Hudson**, sophomore linebacker, Carmel, IN; **Rob Sutura**, senior defensive back, Eden Prairie; **Brad Borkhuis**, junior offensive guard from Minot,

ND; **Terrence Wilcox**, senior linebacker, Miami, FL; and **Ben Woodford**, junior, wide receiver, Chippewa Falls, WI.

The BSU gridders will open the season September 4 at home by hosting Minot State for a night game before travelling to St. Thomas a week later. The expanded NSIC now includes ten teams, with conference home contests against Wayne State (NE) September 18, Concordia St. Paul October 2, Moorhead State October 16, and Minnesota Duluth October 23. League outings on the road are September 25 at Northern State (SD), October 9 at Southwest State, October 30 at Minnesota-Morris, and November 6 at Minnesota-Crookston. A November 14 date with UW-Stevens Point in the HHH Metrodome in Minneapolis closes out the regular schedule.

With the expansion of the NSIC, Bemidji State and Winona State won't face each other this season, a fact which may prove critical late in the season. The WSU Warriors

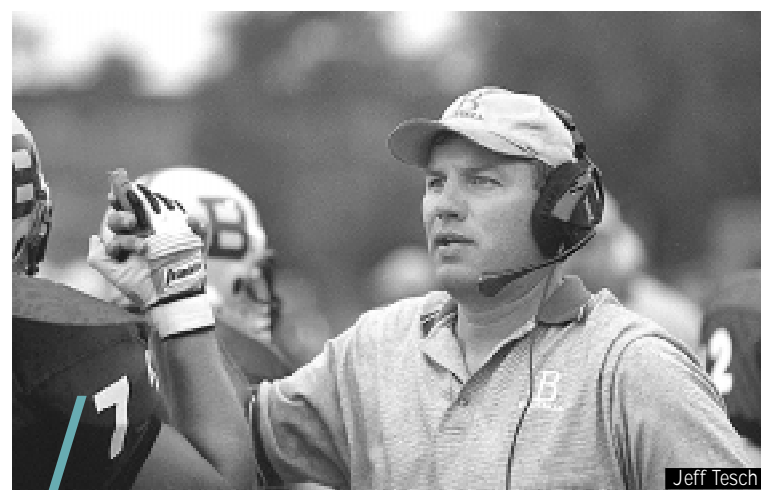
were unbeaten in the conference last season and were denied a play-off bid by the NCAA II selection committee.

In pre-season polls, Winona State has been listed among the best teams in the division with Bemidji State receiving consideration as a team to watch. If they have successful seasons, all either can do is hope they're noticed by the NCAA.

"I've coached in the NSIC, the NCC, and the Missouri League, which are the three NCAA Division II conferences in this region," Tesch commented. "The team that wins our conference can compete in the playoffs. I'm not saying they would be national champs, but they have the ability to be playoff teams."

"It would be nice," he added after a short pause, "to be in that position."

Which would probably lead to as much excitement at the end of the season as there is at the beginning. ■



Jeff Tesch

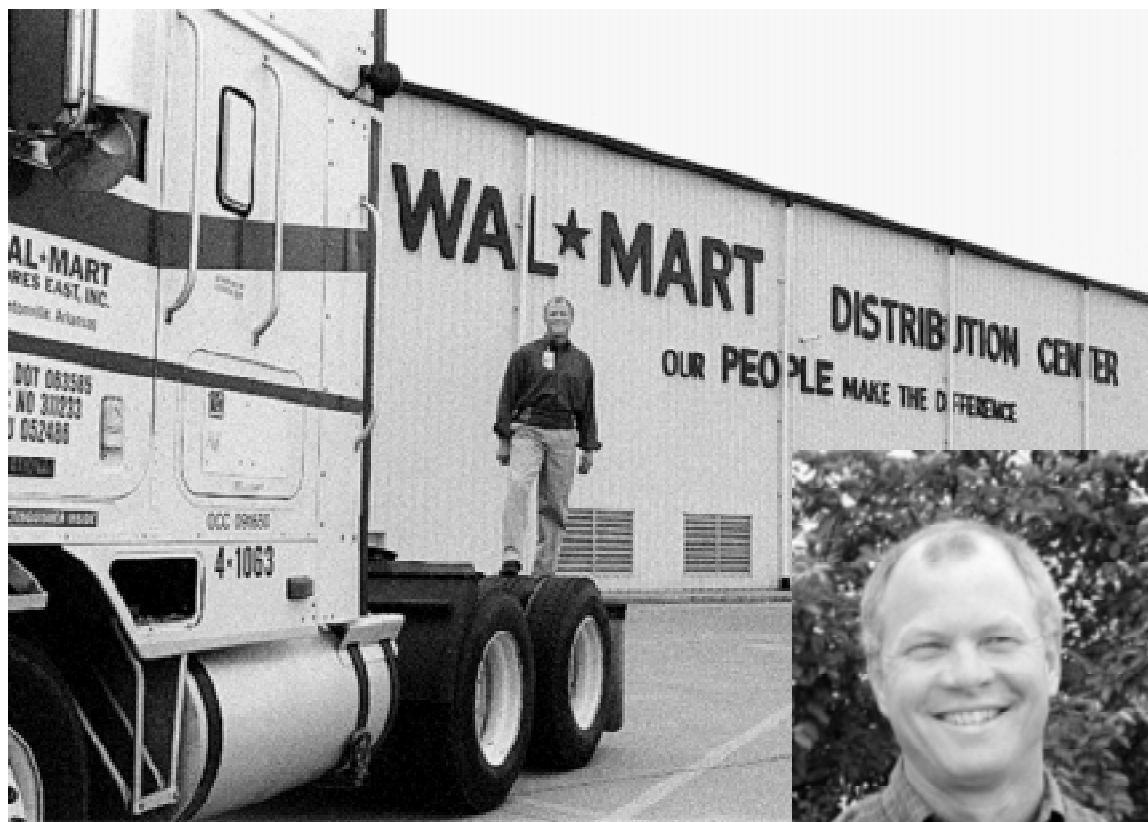
came to Bemidji State because it was a sleeping giant waiting for something to happen." Jeff Tesch

Bemidji State University
BSU Horizons
Bemidji State University Alumni Association
1500 Birchmont Drive NE, #DPH
Bemidji, MN 56601-2699
218-755-3989
1-877-BSU-ALUMI
alumni@x1.bemidji.msus.edu
http://info.bemidji.msus.edu/alumni

Forwarding Service Requested

NON-PROFIT ORGAN.
U.S. POSTAGE
PAID
Bemidji, MN 56601-2699
PERMIT NO. 9
Penalty for Private Use

Adapting in a World of Change



Jim Swanson

TODAY'S SOCIETY treasures many attributes that form the framework of the American economy. Hard work, talent, dedication, imagination, vision and perseverance are just a few that have been highly sought at one or more times in the past century.

To the list comes another characteristic - the ability to change. In fact, more and more firms, organizations and employers are seeking out individuals who show that they can do the job and readily adapt to new situations along the way.

This issue of HORIZONS features two alumni who started down one career path only to discover something quite different as they passed through time. On their journey, they found that change was not the unknown, but an opportunity.

JIM SWANSON

Moving Wal-Mart's Wares

Jim Swanson wanted to be a football coach ... period. No debate, no questions, no doubt in the mind of anyone who ever knew him during his playing days at BSU.

Today, Swanson is thriving as the general manager of Wal-Mart's distribution center in Menomonie, WI.

The change in his life was as sudden as it was dramatic. Following graduation from BSU in 1974, he served as a football grad assistant at BSU. He was a successful teacher and coach on the high school level; the offensive coordinator at NSIC foe Northern State (Aberdeen, SD); and the head coach at Fergus Falls Community College.

His path was clear, and he was heading straight to where he wanted to go when he encountered a friend who worked in the logistics of moving freight from manufacturer to store. It was not a fork in the road Swanson was even vaguely interested in pursuing, but he agreed to visit with the company's representatives because he wanted to see how job interviews were conducted in the private sector.

The company's representatives turned into recruiters, and after several fruitful discussions, Swanson found himself working for Dayton Hudson Corporation. Nine years later, Wal-Mart was opening a highly computerized distribution center and tapped Swanson to run the 1.2 million square-foot facility.

"Dayton Hudson is a tremendous corporation, but no one does retail sales like Wal-Mart," Swanson said. "When we opened this center in 1993, it was a brand new facility. As time went on, we added bigger computers and faster sorters. We have been able to keep pace with changes and retrofit to maintain our state-of-the-art technology."

The Menomonie facility handles around \$2.2 billion dollars of merchandise each year with an average of three million cases of goods received and

shipped each week. The turnaround for much of the merchandise is less than 24 hours.

"Hopefully, we don't get to see very much of the goods that come in," Swanson admitted. "Our goals are to get the goods to the stores in the best condition possible and in a timely fashion."

People, computers and miles of mechanized conveyers help ensure that everything goes when and where it is supposed to. Each box, case or item is bar coded as it arrives, enabling it to be tracked throughout the center. It is placed into a holding bin, where it is retrieved in as short a span as eight hours. From there, items are placed on a multi-layered conveyor system that runs through much of the facility. The tracks eventually converge to a routing platform that resembles a train switching station and sends the goods to the correct truck being loaded for a specific store.

It's a simplified description of a highly complex system, one that determines that eight Wal-Mart stores in parts of six states will run out of charcoal briquettes on August 1; orders a supply from the correct vendor to be delivered to Menomonie on July 29; and distributes the shipment from the manufacturer so that the store in Brainerd will get the 24 bags it needs and the store in Grand Forks will get the ten bags it needs on July 30.

Swanson feels that the transition from teacher and coach to manager of the center is actually quite normal and not as foreign as might be expected.

"Like athletics, everyone here in Menomonie sees themselves as part of a team," he explained. "There is an understanding that each individual plays a valuable role that adds to the overall success of the plant as a whole. In this building it is generally understood that we don't have any one position that is more important than any other job — it's just a different job."

"Every manager here is called a coach, and we make sure we've trained and developed individuals to do their jobs. The people manage their own time and know the team goals, which can change every day."

The 1,400 employees at the distribution center have come to accept change in the plant. Computers permeate the whole opera-

tion - from hand-held scanners to machines mounted on forklifts. Eventually, this could lead to a system that features the non-stop flow of freight with goods received and routed directly to a truck being loaded for the appropriate store.

"Some are threatened by change, others welcome it," Swanson said. "Our whole company is founded on change. We've found that we have to get out of the box to survive, and that people survive well in this environment."

DR. BOB BORG

Shedding Light at Lucent Technologies



Bob Borg

Dr. Bob Borg was comfortably doing a job many of his colleagues would have given one or two large research grants to do when his life was redirected.

Borg graduated from BSU in 1969 with a degree in physics. During a summer internship at the National Reactor Testing Facility in Idaho Falls, ID, he got hooked on nuclear physics. After a stint in the service, he converted his GI Bill benefits into advanced study at Purdue. While there he earned his master's and doctorate degrees and established himself as a researcher in the fields of refueling reactors and safety analysis.

He remained at Purdue for three years before moving to the Argonne National Laboratory as an engineer in reactor analysis and safety. His job was to develop software that simulated hypothetical core disruptions - basically meltdowns; simulate the results on a computer; and analyze the results. Modification to reactors could then be designed

(Continued on page 3)

BORG (Continued from page 2)

to make them inherently safer.

In 1982 he decided that a move from the abstract to the real was in his best interest, and started exploring new fields. AT&T's prestigious Bell Lab was hiring and he was interested. He started as a system test engineer. In 1996, AT&T underwent one of its splits with the research and development components of Bell Lab joining hardware and software production in a new company, Lucent Technologies.

Today Borg is a technical manager and development advocate overseeing research in electronic digital switching systems for Lucent.

"One of the big factors contributing to the decision to change careers was related to delivering a product that could be used by someone within a year after it was developed," Borg said. "At Argonne, the problems were very technically challenging and much of the work was done by very small teams of highly skilled scientists.

"At Lucent, the problems are also challenging and they need to be solved in a given time interval. Many are a different kind of problem. For example, how do you get 100 or more engineers working in the same direction to achieve a technically challenging, common goal and produce a product in less than one year."

Borg lends his expertise to the development of software products for switches and to new techniques in developing software. Switches are specialized forms of

computers and, in the world of communications, Lucent makes technology work and switches make Lucent work.

His work has taken him to three continents and he's been involved with projects that have included up to 250 engineers, all writing millions and millions of lines of code that have to come together at a specific time. Switches today have to perform multiple tasks with each phone call, track several sets of data, compile complex billing information simultaneously, all within a couple of seconds.

At the Lucent research facility in Naperville, IL, where he is based, Borg is among 10,000 engineers who work in one of six separate buildings. The field is growing at an astounding pace. Lucent hired 1,500 engineers — computer information specialists, computer scientists, and electrical engineers - last year and is erecting five new buildings in Naperville.

"One of my last jobs was to deliver a product in Japan that allowed for up to nine different telephone companies to get a piece of the billing for a single call," Borg said. "In order for that to happen, we have to use our research and development facilities all over the world and not just in Naperville."

Looking to the future, he sees advances in wireless communication, the Internet, and new technologies.

"In parts of the world where it costs thousands of dollars to run a wire, it's so much easier to get

a mobile unit - and you don't have to dig up the streets," he commented. "Hardware and information transfer systems will become quicker over the next ten years, and we'll need to adjust.

"At Lucent-Bell Lab, you have to learn to live with change. We continuously make changes based on evolving technologies, processes and procedures. The same applies to one's personal life." ■



The 90-year-old Deputy Hall received a much needed facelift this summer when workers removed and replaced the mortar between the bricks.

Where We Are ... What We're Doing



ALL CITIES ARE LOCATED IN MINNESOTA UNLESS OTHERWISE NOTED.

1920s

Lorene Haaverson ('29) of Bemidji recently celebrated her 90th birthday. She's been a Bemidji resident for 56 years and taught for 18 years at Riverside School, attended by children from southwest of Bemidji. She retired from teaching in 1973 and traveled with her husband, William, until his death in 1980. The couple had three children, all of whom live in Minnesota.

1940s

Morris Sattgast ('49) and his wife, Leah, celebrated their 50th wedding anniversary on June 17. They have lived in Buhl since 1966 and owned and operated a business until their retirement eight years ago. They have one son who lives in Portland, OR. The couple plans a celebration trip to the Oregon coast.

1950s

Don Peterson ('50) and his wife, Pat, of Crookston recently celebrated their 50th wedding anniversary. Don taught at Central High School, Crookston for 32 years until his retirement in 1985.

The couple raised three sons, one deceased, and now has six grandchildren and two great-grandchildren. **Roger Bloomquist** ('58) retired from a 30-year teaching career at International Falls schools where he taught business education. **Marlon Davidson** ('58) was selected as Bemidji's 1999 Friend of the Arts, an award bestowed by the area Friend of the Arts organization. "Marlon's greatest contributions to the artists and art groups in our community has been his willingness to support all of us," said Lonnie Knutson, who nominated him for the award. "He has mentored many students in his home. His care, concern, support and encouragement to artists has certainly had an impact on their lives and work." He has shown his paintings at numerous exhibitions throughout northern Minnesota.

1960s

Frank LaPatka ('67) retired this spring from his position as Lino Lakes Elementary principal, concluding a 32-year career in education. **Carol Tappero Anderson** ('62) of Wrenshall has retired and looks forward to traveling and visiting her two grandchildren more often. **Edith Kramer**

Dalleska ('62) currently works as an architectural drafter in Minneapolis. **Dale Swenson** ('60) of Brainerd has been working for the past four years as a high school athletic equipment manager after concluding, in 1995, a 35-year career as an English teacher. **Phyllis Ertz** ('60) lives in Clear Lake, IA, and most recently subbed 10 weeks at Mason City High School in the counseling department to help pay for Elderhostel trips. She next plans a trip to San Francisco, CA. She's been retired since 1995. **George Parmeter** ('69) of Huron, SD, is rector of Grace Episcopal Church and dean of the Eastern Deanery of the Diocese of South Dakota. He's also a member of the James Valley Shrine Motor Corps. **Tom Saterdalen** ('64) is boys hockey coach at Bloomington Jefferson High. His team's record won recognition in April from the Star Tribune when it was listed among the state's top 10 high school sports teams. The story listed the team's claim to fame as its winning the first three state tournaments after hockey split into two classes (1992-94), two Tier I titles and a Class AA championship. **Ken Baumann** ('69) is football coach for Mahanomen High School. His team's record won recognition in April from the Star Tribune when it was listed among the state's top 10 high school sports teams. The story listed the team's claim to fame as being the only football team to win four consecutive state titles (Class C, 1990-93) since the beginning of the present playoff system in 1972. **Esther Mills** ('64) of Montevideo teaches speech, advanced speech, writing, advanced writing and Midwestern authors

at Lac qui Parle Valley High School. **Robert Lykins** ('62) works for the Department of Defense Dependents Schools in Wiesbaden, Germany, as the special projects officer for DoDDS-Europe. In August he will have been with DoDDS in Japan and Germany for 25 years. **Jim Williams** ('68) has retired from a 25-year teaching career in Wadena schools. Since 1981 he's taught students with learning disabilities at the high school and prior to that worked as a principal for the Todd-Otter Tail-Wadena Cooperative. He and his wife, Mary, have three daughters. Retirement plans include spending time at his lake cabin near Walker, traveling and visiting his daughters. **Carol Close** ('68) of Bemidji was recently honored as a woman of achievement by the professional educators association, Delta Kappa Gamma. She was selected on the basis of her dedication to education, leadership skills and community service. **Norman R. Miller** ('60) has retired for the second time from the Luverne School as superintendent. His first retirement as superintendent for Luverne was in 1995 when he formed his educational consultant company called ADM. In August of 1998 Luverne lost its superintendent and Miller returned to fill the position for a year. He and his wife, Becky, live in Plymouth. **Mary Aho** ('69) of Clearbrook retired from teaching at Swanville schools. She's been with the math department and Knowledge Bowl in Swanville for 30 years. **John Kovar** ('66) of Anoka retired from teaching at Swanville Schools.

(Continued on page 4)

Bemidji State University
BSU Horizons

Vol. 15, No. 1, Fall 1999

Produced by the News and Publications Office and the Alumni Office at Bemidji State University. HORIZONS is published quarterly and distributed without charge to BSU alumni, students, faculty, staff and other friends of the University. BSU is an equal opportunity educator and employer.

Editor: Al Nohner
Designer: Kathy Berglund
Photographer: John Swartz
President: Dr. Jim Bensen
Alumni Director: Sue Kringen
Contributing Writer: Jody Grau
Editorial Assistance: Peggy Nohner

Editorial Board: Dr. Jim Bensen, BSU president; Dr. David Tiffany, vice president for University advancement; Al Nohner, director of news services and publications; Sue Kringen, director of alumni relations; Jeff Totten, assistant professor of business relations.

Students Face Tuition Changes

When Bemidji State University students returned to campus for fall semester classes, they noted two significant differences relating to tuition: one was the increase in rates and the other was the removal of the upper credit limit on the band (see related story on this page).

The first came about after the board of trustees for the Minnesota State Colleges and Universities (MnSCU) approved tuition increases for 36 higher education institutions in the state in mid-July. The increases received widespread coverage in the media and, at BSU, prompted President Jim Bensen to send an unprecedented letter to returning students a week later to explain the university's action.

The letter outlined that the process of funding public college and universities in the state is accomplished through an appropriation from the state legislature

and the collecting of tuition, higher education's equivalent of a user fee. Legislative dollars account for approximately 60 percent of the university's budget with tuition providing the remaining 40 percent.

The board action resulted in raising the BSU band for 12 or more credits from \$1,250 to \$1,400 per semester. Full-time students taking the 16 credits per semester required to graduate in a timely manner would end up paying a total of \$87.50 per credit in the new band, which is lower than the per-credit tuition paid by students at two other state universities (see chart). Students at BSU taking more credits per semester would end up paying even less per credit while those taking fewer would pay more per credit.

Those falling below the band would still pay less than students at Mankato State, which has set their rate at \$104 for each credit below 12 in a semester.

The other change at BSU was the removal of the cap, which means students taking any number of credits beyond 12 in a single semester would still pay \$1,400.

The decision to increase tuition was not an easy one made by the board.

"To keep our quality as high as possible while not sacrificing affordability, our presidents recommended raising tuition a bit more than

we anticipated," said MnSCU board chair Michael Vekich. He noted that everyone had hoped to hold tuition increases to a lower level, but added, "The state Legislature chose not to invest as much new money in our system as we hoped for during this time of budget surplus."

Both the level and timing of the legislative action caused problems for schools.

"Bemidji State and many other MnSCU institutions were caught off guard," Bensen said. "The 1999 legislature didn't approve MnSCU funding until late May, and by the time the full ramifications of their actions were known, students had left campus."

The ramification of the legislative allocation was an operating deficit for nearly two-thirds of MnSCU's campuses. Campuses had two choices, finding additional revenue or sacrificing quality, programs or personnel.

With future earnings and career success directly affected by the quality of classes, the Bemidji State administration decided that reductions would not provide services which students expect or want. Increasing tuition was one way to dull the impact of the shortfall, but did not come near to solving the dilemma. The remaining deficit for the 1999-2000 fiscal year will be covered by university reserve funds.

University officials also noted that not all students would feel the effect of the increase since more than 50 percent of full-time enrollees who receive financial aid were regarded as high need students. They receive some form of fed-

eral grant money, and since the eligibility threshold for these programs follows tuition and other higher education costs, many of the most needy students would experience a corresponding increase in aid.

"At the same time, I know that our students work hard on their education and work hard for their education," Bensen said. "It was that way when I was a student here in the 1950s, and that is something

that will never change on this campus.

"As I wrote in my letter to the students, additional revenue from tuition this year will help maintain the educational core at the university," he added. "The bottom line is that education at Bemidji State University comes at a value that matches or exceeds other schools across the region. It is a short-term investment that pays long-term dividends." ■

Banded Tuition

Bemidji State University initiated a banded tuition program with the introduction of the semester system in the fall of 1998. This program charges part-time students, those taking less than 12 credits a semester, a per-credit rate for tuition. Full-time students, defined as those enrolled in 12 or more undergraduate credits a semester, pay a flat rate. Last year the band was 12-18 credits at a tuition fee of \$1,250 per semester. This year, the band starts at 12 and has no cap with a tuition fee of \$1,400 per semester.

The University initiated banded tuition to encourage students to take more credits per semester and to promote timely graduation rates.

Comparison of 1999-2000 Tuition Rates

(Average load needed to graduate from Bemidji State University in four years, 16 credits per semester; cost based on in-state tuition rate.)

BSU Based on Total Credits (Banded Tuition)			
	Semester/Annual Tuition		Actual Tuition
Bemidji State	16/semester	\$1,400	\$87.50/credit
	32/school year	\$2,800	
	17/semester, 34/year	\$2,800	\$83.25/credit
	18/semester, 36/year	\$2,800	\$77.78/credit
Minnesota State Universities with Tuition Based on Individual Credits			
	Semester/Annual Tuition		Actual Tuition
Metro State	16/semester	\$1,411	\$88.19/credit
	32/school year	\$2,822	
	17/semester, 34/year	\$2,998	
	18/semester, 36/year	\$3,175	
Moorhead State	16/semester	\$1,364	\$85.28/credit
	32/school year	\$2,728	
	17/semester, 34/year	\$2,900	
	18/semester, 36/year	\$3,070	
Southwest State	16/semester	\$1,404	\$87.75/credit
	32/school year	\$2,808	
	17/semester, 34/year	\$2,983	
	18/semester, 36/year	\$3,159	
St. Cloud State	16/semester	\$1,379	\$86.20/credit
	32/school year	\$2,758	
	17/semester, 34/year	\$2,931	
	18/semester, 36/year	\$3,103	
Area Minnesota Colleges and Universities			
	Tuition Per Credit	16/semester	32/year
Concordia College (Moorhead)	\$416	\$6,656	\$13,312
College of St. Scholastica (Duluth)	\$481	\$7,696	\$15,392
University of Minnesota-Duluth	\$132	\$2,112	\$4,224
University of Minnesota-Morris	\$148	\$2,368	\$4,736
University of Minnesota-Crookston	\$112	\$1,792	\$3,584

(Continued from page 3)

He's been with the history department and served as media director for the past 27 years ... **Diane Grosso** ('62) of Nashwauk retired from teaching at Swanville schools. For the past 23 years she's been in charge of teaching math, reading, language and science to the special education students ... **Ken Witt** ('68) has retired from a 31-year teaching career at Tracy High School. He is licensed to teach all sciences and during his years at Tracy has taught every course and every grade ... **Ralph Awe** ('63) retired from a 29-year teaching career at International Falls. He has taught math, primarily to seventh-graders, and has been an assistant coach of both baseball and basketball. He and his wife, Kathy, have three children ... **Lynda Faith** ('68) has retired from teaching at International Falls schools. She taught high school English at various grade levels for more than 30 years. She has volunteered as the senior high school site committee parent representative and recently became the Northern Minnesota representative on the executive council of the Girl Scouts of America ... **Carole Nordine** ('62) retired after more than 20 years of teaching at Warroad High School. She and her husband, Clifford, have five children ... **Don Fox** ('66) has retired after teaching science at Pershing High School for 33 years and serving as an administrative assistant for about 20 years. He was also an assistant football coach and coached in the junior varsity basketball and volleyball programs and the junior high basketball program. He plans to stay in the Plummer area and

remain active in the community ... **Reuben H. Brooks** ('67) of Nashville, TN, continues to serve as professor of geography at Tennessee State University. He was recently widowed ... **Lowell Trimble** ('66) and his wife, Joyce, of rural Tenstrike celebrated their 50th anniversary on June 12 ... **Bill Lawrence** ('62) was the subject of a feature story in the April edition of Minnesota Monthly magazine. He is the publisher of the Native American Press/Ojibwe News, one of the country's few independent, non-tribal-affiliated American Indian newspapers ... **William Bohn** ('69) recently retired after teaching industrial arts to grades 7-12 for 30 years in Clearbrook-Gonvick schools. He and his wife, **Barb** ('68), have two sons ... **Marilyn Sager** ('68) retired this spring, ending 31 years of teaching elementary students in Monticello ... **Howard Henrikson** ('65) retired after spending 34 years in teaching, 23 of those in the Plummer schools ... **Terry Schlander** ('66), a fifth grade teacher at Hibbing's Greenhaven Elementary School, has been named Wal-Mart Teacher of the Year. He's been teaching at Greenhaven for four years and previously taught at the Cobb-Cook School for 28 years. Wal-Mart associates presented Schlander with the award recently, along with a \$500 education grant for the Greenhaven School.

1970s

Kathy Kaiser Gilbert ('73) lives in Deer River ... **Maxine L. (Samuelson) Derrer** ('75) lives in Garner, NC, ... **Lenore R. (Adamson)**

McCutcheon ('77) of Stockton, CA, has been teaching at a Christian school for 17 years, is married and has one 18-year-old son. She also spent two years teaching in the Cayman Islands ... **David Furuseth** ('77) teaches elementary science at Northome ... **Joni Wasberg** ('77) has taught elementary music in the Fergus Falls School District for 22 years and has been active as a soloist in several vocal groups including Fergus Falls Area Chorale, The Eschweiler Singers and the Heartland Chorale. She's also performed in musicals and has been the Orff clinician at MMEA's Celebration of Young Musicians. She and her husband, Chris, have a four-year-old son ... **Jack Nelson** ('70) plans to retire in October after teaching for 29 years in the Wadena and Deer Creek schools. During his tenure he taught fifth and sixth grades and Title I and coached track and cross country from 1982 to 1995. During that time he was named district coach of the year for both sports, as well as regional coach of the year. He and his wife, J. Marlene, have two sons and four grandchildren ... **Bev Desotell** ('76) was honored recently as Bertha-Hewitt's teacher of the year. She's been teaching first grade in the same district for 21 years and lives on a farm with her husband, Ray, and their three daughters ... **Karen Koshiol** ('78) of Glendale, AZ, has been teaching for the last 10 years in Phoenix, AZ, and prior to that taught



Karen Koshiol

11 years in Farmington. She was nominated by a former student in 1998 to the "Who's Who Among America's Teachers." Koshiol is married and has one child ... **Rose (Bajda) Anttila** ('76) and husband, Curt Anttila ('76) live in Aurora. Rose recently received her master's in education and Curt is economic development coordinator for the east RANGE ... **Bob Bird** ('74) of Kenai, AK, is still teaching and coaching hockey after 25 years, having spent 22 of them in Alaska. He writes, "CNN news called me the most conservative public school teacher in America at the 1996 Republican Convention" ... **W. Clark Johnson** ('76) teaches in the Kasson-Mantorville schools and was chosen to be teacher of the year in May 1998. He and wife, Nancy, live in Mantorville ... **Carolynne White** ('71) has been a teacher of special education and emotional behavioral disorder students in Byron for 20 years and in April was recognized as teacher of the month by the Post-Bulletin newspaper of Rochester. A mother who nominated White for the honor said White changed her son's life. "He told me it's only because of the hope that Carolynne White gave him, that because she believed in him, he could believe in himself," the mother wrote. White has a 14-year-old son ... **Deb Vanasse** ('78) of Fairbanks, AK, published her second novel for young adults this spring with Clarion Books, New York, NY. Out of the Wilderness is an action packed family drama set in the Alaskan wilderness and is suggested for age level 10-14 ... **Karen Norell** ('76), Montgomery-Lonsdale High School principal, was guest speaker

at a Memorial Day program in Montgomery. Norell has been an educator for 22 years, teaching for nine years and working in administration for 13 ... **Shirley Schrupp** ('74) retired in June ending 25 years as head librarian for the Pine River-Backus School District. Her plans for retirement include lots of fishing, hunting, gardening and reading ... **Ron Ruud** ('79) and his wife **Elwyn Ruud** ('78) live in Karlstad. Ron was promoted from principal to superintendent at Tri-County Public schools of Karlstad. He's worked in the district since 1980. Elwyn teaches third grade at Roseau Elementary School. The Ruuds have two children ages 17 and 10 ... **Forrest Novacek** ('75), a captain in the Navy, recently received a master of science in engineering degree in engineering management from the Catholic University of America. He earned this advanced degree while attached to the Joint Staff in the Pentagon, Washington, DC. He's been in the Navy for 24 years, has been stationed on five different nuclear submarines and is currently assigned to one of the Defense Agencies in the Washington, DC, area. He lives in Woodbridge, VA...



Forrest Novacek



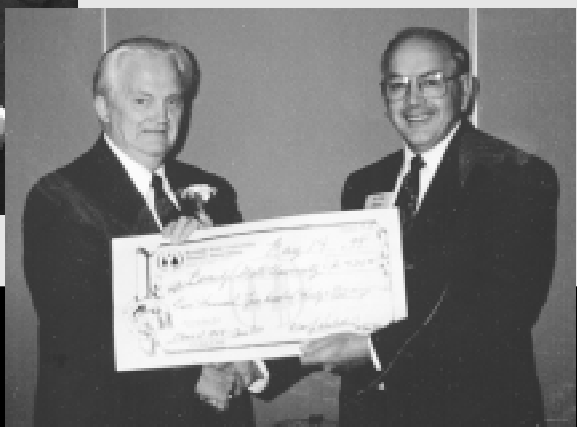
1949 REUNION

ABOVE: Bemidji State University alumni who celebrated the 50-year reunion of the class of 1949 included (left to right) front row: Maurine Boyd, John (Jack) Luoma, Gladys Barron, Violet Rindahl, Joyce Utter, Hazel Edlund, Rae Wynn, Marion Stordahl, Margaret Carlson. Back row: Allan Westerlund, Richard (Dick) Edlund, John Emkovic, Ellsworth (Tiny) Lubke, Doug Leach, George Stai, George Murray. The 1949 class reunion took place on May 13-14, and was held in conjunction with Bemidji State University's Commencement where reunion participants served as Honor Guard. Following registration, 1949 alumni also attended an opening reception at the Bemidji Town and Country Club, BSU departmental commencement brunches, a commencement luncheon, and a presidential banquet hosted by BSU President Jim Bensen.



LEFT: Jack Luoma (left), chairman for the 1949 class reunion, is shown with Jim Bensen, president of Bemidji State University. Jack also served as master of ceremonies during the presidential banquet.

BELOW: During the class of 1949 reunion presidential banquet, Allan Westerlund, (left) chairman of the 1949 class gift committee, presented a check to BSU President Jim Bensen in the amount of \$2,430. Donations to the 1949 class gift were collectively made by alumni of the class of 1949 and were directed to the Bemidji State University Foundation scholarship program.



FOR MORE INFORMATION CONTACT:
Bemidji State University Alumni Association
1500 Birchmont Drive NE, #DPH Bemidji, MN
56601-2699 218-755-3989 1-877-BSU-ALUM
alumni@vax1.bemidji.msus.edu
<http://info.bemidji.msus.edu/alumni>

BSU Alumni Career Network Established

The Bemidji State University Alumni Association, in partnership with the BSU Department of Career Services, is announcing an Alumni Career Network that will be established this fall.

"One of the great advantages of a University like Bemidji State is the enthusiasm of the alumni and their interest in helping others from their alma mater," stated Pam Raden, Alumni Association board member and chair of the association's student services committee. "Alumni in the Career Network volunteer to help students and recent graduates by providing information about their occupations, networking with potential employers, advising about job search strategies and further schooling.

"The goal of the Alumni Career Network is to help BSU students and recent graduates easily get connected with alumni currently working in their field of interest. A strong career connection source can help retain BSU students and guide them along their career path of choice."

A feature of the new Alumni Career Network is that it will be completely electronic with all communication being done through the Internet. Alumni volunteers sign up on a website and are entered onto a database which is sorted by major, minor, career, geographic location and employer. If a student is seeking information on graduate schools, that information will also be made available on the Career Network.

"The Career Network is very user friendly," stated Sue Kringen, director of the BSU Alumni Association. "We want the Network to be easy to use, as well as functional and productive."

Jessica Gonzalez, a BSU student majoring in computer information systems, was hired to design the Career Network homepage and database. "We are so very pleased with the product Jessica has designed and

produced for us," said Marjorie Giauque, director of BSU Career Services. "She is very talented and we were very fortunate to have her working with us on this project."

The Career Network will be introduced to BSU students during the Alumni Career Fair, which is scheduled to take place on October 27. Until that time, the Alumni Association will be recruiting volunteers. Alumni of Bemidji State University are encouraged to volunteer and become a part of the BSU Alumni Career Network. All alumni need to do is to log onto: http://lea.bemidji.msus.edu/cservicescareer_net.html. Follow the easy directions and volunteer ... on-line.

For further information, contact the BSU Alumni Office at: 1-877-BSU-ALUM (toll free).

The BSU Alumni Association Has A Listserv

Join fellow BSU alumni on the alumni listserv. To subscribe and unsubscribe from the list, all you need to do is send your commands to: listserv@info.bemidji.msus.edu

The commands that the listserv understands are:

SUBSCRIBE alumni,
UNSUBSCRIBE alumni,
HELP.

The first command subscribes an individual to the alumni list; the second one takes a person off the list; and the third one sends a help message.

These commands should go in the **SUBJECT** part of an e-mail. After sending the **SUBSCRIBE** command, the listserv will reply to indicate a subscription has taken place. A similar message will appear for the **UNSUBSCRIBE** command. Once subscribed, messages to the listserv can be sent to: alumni@info.bemidji.msus.edu

Renee Soboleski ('70) retired from teaching at International Falls schools. She taught for 29 years, first as a special education instructor and then as an elementary teacher, most recently in the fifth grade. She and her husband of 25 years, Frank, have three daughters... **Bruce Bogda** ('75) of Detroit Lakes is entering his 25th year of teaching this fall at Roosevelt Elementary School, Detroit Lakes, where he teaches fourth grade. He and his wife, Naomi, have four sons... **Van Jordahl** ('79) takes over as the new principal at Kenneth Hall Elementary School in Spring Lake Park this fall.

1980s

Sandy Richard ('85) retired from teaching at Bemidji's Horace May School at the end of this school year... **Don Harms** ('89) of Crystal works at Olson Thielen & Co., Ltd, a CPA firm in Eden Prairie. He lives with his wife, Janelle, and 18-month-old son... **Terri Anderson** ('86) of Huron, SD, plans a summer wedding with Dan Schlader. She was recently named woman of the year for the Huron Noon La Sertoma Club and woman of the year for the Huron's Gamma Chapter of Beta Sigma Phi. She is a member of the Huron Area Chamber of Commerce and serves on the ambassadors committee as well as editing the newsletter of the Huron Kiwanis Club and being involved in many other community service clubs... **Peter Bauer** ('81) is a U.S. Air Force senior flight surgeon, Lt. Colonel, flying F-16CJ aircraft out of Spangdahlem Air Base, Germany... **Scott Murray** ('87) of Bloomington has

been married for five years and has 16-month-old twins, a boy and a girl... **Lori French** ('83) of Woodbury conducts the 3M company men's and women's choruses. She has two children, ages five years and six-months... **Jim Fiskum** ('80) of Big Lake has been teaching music for 18 years... **Scott Vogel** ('88) of Princeton is the new band director at Coon Rapids High School. He lives with his wife, Kari, and three-year-old son, Tristan, just outside Princeton... **Stacy (Muckala) Bury** ('86) works at Chubb Insurance, Minneapolis, and lives with her husband, Tim, and their two sons... **Brad Johnson** ('86) is the new superintendent of Hill City Schools, coming to the position after five years as the district's K-12 principal. He was born and raised in Hill City and graduated from Hill City High School. He now heads up a staff of 70. The school district is the major employer in the Hill City area except when Quadna Resort is in its busiest season. Johnson lives with his wife, **Becky Pierzina** ('92), who works as an occupational therapist in the Grand Rapids School District... **Bernie Schumacher** ('83) started her own radio station this year. KXXX Hot Country 92.5 is aired in the Park Rapids area. After earning her degree, she and her husband, John, moved to Sleepy Eye where she worked for KEEZ radio in Mankato. In 1987 they moved to Park Rapids and she went to work at her parent's station, KPRM-AM and KDKK-FM, from which Hot Country now leases space... **Charles R. Powell** ('83) is a partner in the law firm of Powell, Powell & Light in Bemidji... **Jane Silvers** ('80) of

International Falls recently completed her first year of teaching first grade at St. Thomas School, International Falls. During the previous 11 years she has been busy raising three children, working part-time at K-Mart and substitute teaching... **Mari L. Berg** ('85) of Grand Rapids is beginning her 14th year in public accounting as the audit partner of Glorvigen, Berg, Theis, Lind & Co. PLLP in Grand Rapids. She has six children... **Todd Vonasek** ('85) has been appointed to the position of resident engineer in construction for the Bemidji area with the Minnesota Department of Transportation. He began working for MnDOT as a civil engineering student trainee in 1981... **Rebecca K. Westrum** ('83) of Rosemount plans a Sept. 5 wedding to David Lehmann of Rosemount. She works as a sales representative at Champion Products in Burnsville for the Strictly Business Computer Expos produced in Minneapolis, Houston, TX, and Dallas, TX... **Tim Buckley** ('86) recently accepted a job as top men's basketball assistant coach at Marquette University... **Margaret Allen-Thunderhawk** ('82) recently became principal of the Bug-O-Nay-Ge-Shig School near Bena on the Leech Lake Reservation. She has taught at the Four Winds and Anderson Open Schools in Minneapolis and also interned as principal at Duluth and worked at the Pine Point School on the White Earth Reservation... **Angela Johnstone-Nistler** ('88) of Bemidji teaches special education in the Bemidji School District and is head coach of the Bemidji High School Nordic ski team... **Chuck Johnson** ('83) of Brooklyn Park is a

production lead with Sci-Med Life Systems, Maple Grove, and his wife, **Chris (Wahlstrom) Johnson** ('82) has been teaching for five years and is currently a second grade teacher for Osseo Area Schools. Prior to that she spent 12 years at home raising the couple's three children. The Johnsons have been married for 17 years... **Janice (Braulick) Yliniemi** ('89) of Baxter runs a home graphic design business, White Sands Graphics, and has two children. She married Rock Yliniemi in 1993. He is vice president of



Darlene (Hendrickson) Medcalf ('85) of Coon Rapids is a partner in Marketplace Home Mortgage and the AVP of operations for the company's three offices. Her husband, Tom Medcalf works for Convention Exhibit Services in St. Paul. The couple has four children... **Kathy Yanish** ('83) recently retired from 31 years of teaching. She'd been teaching at

Mahnomen High School since 1969 and over the years has taught math, science and computer skills. Her husband, **Bob Yanish** ('66), teaches vocal music in Crookston. The couple has three daughters... **Dale Grasdalen** ('83) and his wife, Jane, announce the June 15 birth of a daughter... **Alan C. Roline** ('83) has been granted indefinite tenure and a promotion to associate professor by the University of Minnesota Board of Regents. He teaches legal environment, business law and law for entrepreneurs at the University of Minnesota-Duluth. He also coordinates the school's Volunteer Income Tax Assistance Program... **Virginia Schwichtenberg** ('84) of Staples taught last school year at the Staples-Motley High School. Prior to that she'd spent several years teaching for the Pillager School District. She and her husband, Clement, a city police officer, have two sons.

1990s

Jlayne Hemenway ('97) of Park Rapids is teaching physical science in Sebeka... **Lana Schultz** ('91) bought a house in Bemidji in 1998 and has worked for the Gilfillan Center for the past eight years... **Paul Hetland** ('95) of Stillwater is an executive assistant for the Minnesota County Attorneys Association... **Caroline Swanson** ('90) of Chaska teaches music at the Chaska Middle School East and has two children... **Travis J. Hensch** ('98) married Shana Pazdernik June 6, 1998. They have a five-year-old son and live in Bethel, AK... **Shane Bauer** ('98) recently joined

(Continued on page 6)

In Memoriam

Agnes Seaberg ('59) of Minneapolis
Margaret Engebretson ('60) of Cass Lake
Arlene Nelson ('64) of Bemidji
Paul Lewis ('80) of Oakdale
Ernest Neuenfeldt ('67) of Linden, MI
Gladys Erola ('63) of Deer River
Larry Kitto ('71) of St. Paul
Rosemary Given-Amble ('70) of Bemidji
Renaye Costello ('33) of Blackduck
Helen E. Knutson ('55) of Guthrie
Janis Rahier ('64) of Oklee
Myrtle Nordlund ('23) of Clearbrook

A HALF CENTURY OF MUSIC:
A Tribute to Bobbi

Roberta Sellon, known by her family, students and friends as Bobbi, has been a musical fixture in the Bemidji community since the 1950s when she began a long career of teaching and playing violin as well as other stringed instruments. Even though she retired from studio teaching in 1990, she performs chamber music regularly and is a loyal member of the Bemidji Symphony Orchestra (BSO).

On October 9-10, the orchestra is sponsoring "A Tribute to Bobbi," a celebration of her lifelong commitment to music and the BSO. The event will honor her standard of

dedication and perseverance that fulfills the adage that music is a life-long venture.

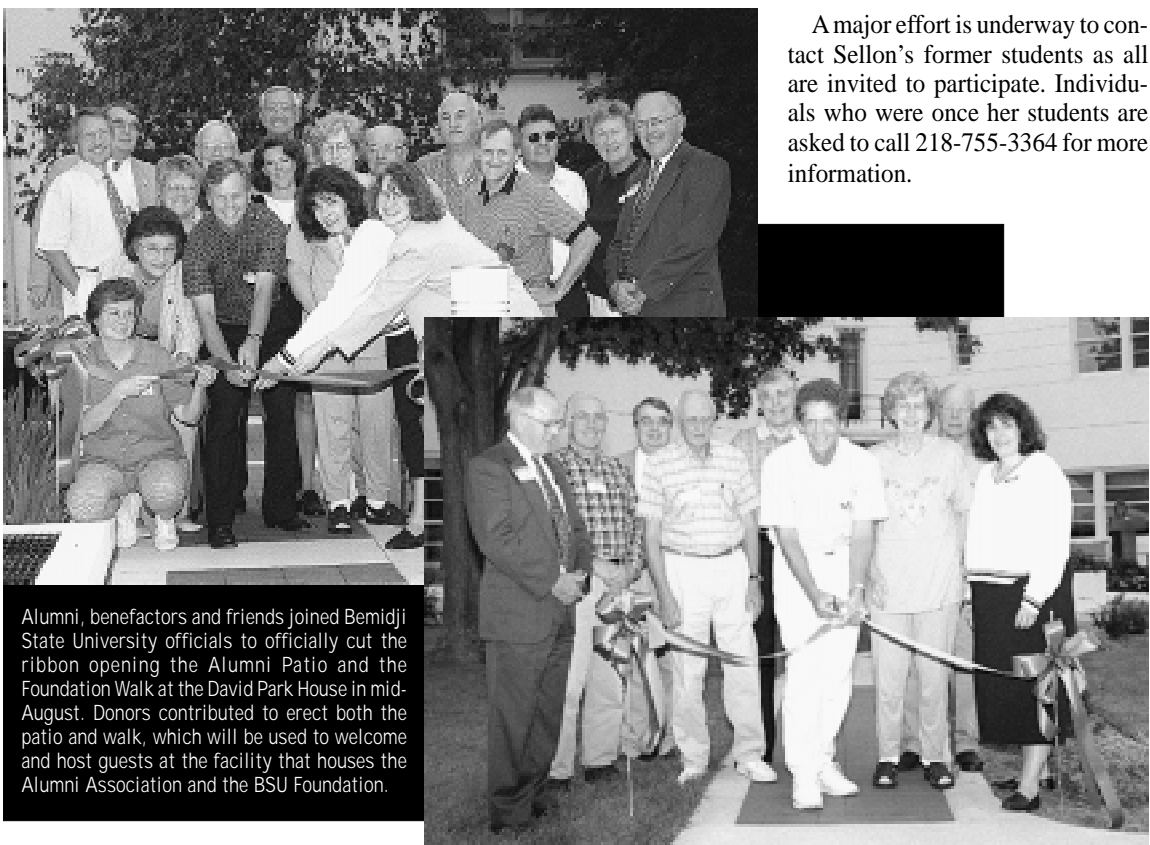
Sellon has plans for many more years of playing, but orchestra members felt that the end of a century is a good time to celebrate a half century of musical contribution to the community.

To make this a musical celebration, all of her former students are being invited to join the Bemidji Symphony for its first concert of their 62nd season and to spend an afternoon making music for the sheer joy of playing.

The schedule of events is:

Saturday, October 9
10:30 a.m. - 12:30 p.m. rehearsal with Bemidji Symphony
2:00 -4:30 p.m. string chamber music reading
7:30 p.m. Suzuki <i>Play In</i>
Sunday, October 10
2:00 p.m. Orchestra Concert

A major effort is underway to contact Sellon's former students as all are invited to participate. Individuals who were once her students are asked to call 218-755-3364 for more information.



Alumni, benefactors and friends joined Bemidji State University officials to officially cut the ribbon opening the Alumni Patio and the Foundation Walk at the David Park House in mid-August. Donors contributed to erect both the patio and walk, which will be used to welcome and host guests at the facility that houses the Alumni Association and the BSU Foundation.

New Members to Board of Directors

The Bemidji State University Alumni Association recently completed elections to fill five, four-year positions on the board of directors. Marion Christianson ('50, Bemidji) was newly elected and will join Roger Aitken ('73, Walker, MN), Caroline Andrican ('53/'62, Hibbing, MN), Debra Kellerman ('72/'75 Avon, MN), and Mark Paulson ('61, Bemidji), as members re-elected to serve an additional term. Members appointed to the Board include Bruce Falk ('71, Salol, MN), Tresa King ('97, Lakeville, MN) and Adele Munsterman ('74, Brooklyn Park, MN). The remaining members of the board of directors include Melanie Benjamin ('88, Onamia, MN), Donald Gross ('81, Council Bluffs, IA), Peggy Marvin Johnson ('67 Warroad, MN), John Liapis ('52, Bemidji), Joanne Provo ('82, Minneapolis, MN), Pam Raden ('86, St. Cloud, MN), Jeff Wallin ('70, San Diego, CA) and Harvey Westrom ('57, Bloomington, MN).

Where We Are ... What We're Doing...

(Continued from page 5)

the Grand Forks Herald as an advertising designer. Previously he worked as a multimedia specialist creating interactive CD-ROMs for the Center for Research and Innovation at BSU... **Saskia Stange** ('97) of Tempe, AZ, received a master of international management degree from Thunderbird, The American Graduate School of International Management in December 1998... **Heidi Forbes** ('96) and Kevin Forbes announce the June 7 birth of a daughter... **Susan Smith** ('97) has been hired by the Deer River Health Care Center as the new manager for assisted living at Comstock Courts Apartments. Smith manages a 30-apartment complex and program providing daily meals, activities and addressing health needs of the residents. She and her husband, Guy, have five children... **Anthony Fauglid** ('93) is one of two new officers hired recently by the Appleton Police Department. Previously he'd worked as a police officer in Russell since 1995... **Joe Silko** ('95) is the new principal at Grand Rapids High School. He's served as an assistant principal at the high school for six years and prior to that was an instrumental music director for 15 years, the last 10 years of that time in the Grand Rapids district... **Jeff Birchem** ('81) and Gretchen Mehmel of Roosevelt announce the May 20 birth of a son... **Innes Stuart McCuaig** ('97) and Laura Anne Schultz recently announced their engagement... **Wade Burgess** ('91) of Newport recently left a position as senior auditor at Ecolab in order to devote more time to completing a masters of business administration degree at the University of

Minnesota... **Curtis Anderson** ('91) of Fayetteville, NC, took command of Headquarters Service Company, 313th Military Intelligence Battalion, 82nd Airborne Division at Fort Bragg, NC, on July 20... **Lynnette Nicole Haller** ('97) and Thomas James Haller Jr. of Bemidji announce the May 14 birth of a son... **Kerri Bilben** ('96) of Elko, NV, coaches volleyball and girls track, is an advisor for the flag corps and holds a teaching position covering everything from K-6 elementary music to three levels of band and choir. She is also the brass caption head for the Elko High School Band, Indians, who recently marched in the 1999 Tournament of Roses Parade in Pasadena, CA. She married Andrew Bilben on Dec. 31, 1996. He is an assistant manager at the Elko Super 8 Motel... **Marty Reinertson** ('97) is the general manager of the Northwoods League team - the Brainerd Mighty Gulls, which opened its second season earlier this summer. He is entering his fourth year in the league... **Carol Brook** ('96) of Los Angeles, CA, recently held auditions and scouted filming locations in Bemidji for a movie she's written. It is an adventure film about two women who find money and hide it on a bus, not knowing it is a tour bus for the band the Indigo Girls. The bus drives off and stops at various American Indian reservations with the two women following, trying to get their money back. She hopes to debut her film at the Sundance Film Festival... **Steve Carlson** ('90) was selected as Frazee-Vergas teacher of the year for 1999. He and his wife, Kathy, a second-grade teacher in Frazee, live in Detroit Lakes and make Frazee the

"educational home" for their daughters who are in seventh and third grades. He's been teaching in the district for 25 years... **Shannon Durand** ('98) of Hastings works as a junior closer and does freelance graphic design jobs on the side... **Christa Frank** ('98) of Pequot Lakes is the new software development programmer in the quality assurance department of Hunt Technologies... **John Romo** ('95) has accepted the position of assistant director of communications for the Mountain West Athletic Conference in Colorado Springs, CO. The Mountain West is a newly organized conference consisting of the universities of Nevada Las Vegas, Utah, New Mexico, Wyoming, Colorado State, San Diego State, Brigham Young and the Air Force Academy. Romo recently completed a two-year internship in the media relations office of the University of Minnesota Men's Athletic Department... **Barb Haluptzok** ('92) was recently selected as Kelliher's teacher of the year. Her first teaching job was at the Bug-O-Nay-Ge-Shig School in Bena. After three years there, she applied for and took the job at Kelliher in 1994. She works with special education students in kindergarten through sixth grade.



Barb Haluptzok

When she's not working she spends as much time as possible with her husband, Troy, and 13-month-old son... **Connie Sunderland** ('94) and Mark Krivich were married Feb. 14 at Lake Tahoe, CA, and now live in Brainerd... **Tim Beyer** ('91) and Carrie Beyer of Bemidji announce the June 4 birth of a son... **Spencer Brandt** ('92) and Cindy Brandt announce the June 1 birth of a daughter... **Amir Syed Ali** ('94) of Warrensburg, MO, works as a graduate assistant at central Missouri State University, Warrensburg, MO, and is finishing a master's degree in business administration... **Jon Buller** ('94) is a controller at Storage Equipment Inc., an \$8 million storage and materials handling distributor in Plymouth. He and his wife, Cindy, moved into a house in Albertville in 1996 and Jon has been employed in his current position for about a year and a half. Cindy is an RN and is currently assistant director of nursing at Crystal Care Center in Robbinsdale... **Joclyn Tiggs** ('94) of Dallas, TX, is employed by the Dallas County Community College District as an administrator, district coordinator of articulation and transfer services. The job involves making sure that those students wishing to transfer from the district's seven colleges receive accurate transfer information from counselors and advisors. She also negotiates articulation agreements with all of the colleges in Texas to ensure the ease of transfer for DCCCD students... **Bert Brandt** ('96) and **Kristin (Thompson) Brandt** ('96) live in Wheaton, IL, where Bert is a project manager with Bovis Construction and Kristin is a high school social

studies teacher and head cheerleading coach at Nequa Valley High School in Naperville, IL. Bert's current project is building the Shakespeare Theater on Navy Pier in downtown Chicago, IL... **Sarah Miller-Martin** ('93) is one of three teachers of the year chosen by Jordan School District for the 1998-99 school year. She is a fifth-grade teacher who began her teaching career as a sixth-grade teacher at Jordan Elementary in the fall of 1993. Last year, Sarah began teaching in a looping situation, beginning with a class of fourth graders and traveling with them as they became fifth graders. During the 1997-98 school year, she was instrumental in setting up a Saturday School program to provide students with extended learning opportunities. In addition, last summer she was the sole instructor for a summer school program that she designed in conjunction with the Carver-Scott Educational Cooperative. She and her husband, Bryan, have one son... **Bryan Martin** ('94), a physical education teacher, was selected as Jordan High School's teacher of the year. During his five years of teaching at Jordan High School, Bryan has been advisor of the Student Athletic Association and member of the Wellness Committee. He's coached girls softball and brought the Jordan Jaguars to the championship of the Minnesota River Conference three times, as well as winning three sub-section championships. He and his wife, Sarah, have one son... **Penny Youngerberg** ('98) of Springfield teaches Spanish... **M. Elaine Bonnell** ('94) of Warroad is an ESL teacher at the Warroad Middle School.



Rain did little to dampen the festivities when the Naylor family of Bemidji became the latest addition to the BSU Founders Walk during ceremonies last July. Pictured at the Founders Walk are (left to right): Dr. Jim Bensen, BSU president, Jack Naylor, Charlie Naylor, and Chub Naylor.

BSU Alumni Relative Scholarships Awarded

The Bemidji State University Alumni Relative Scholarship Program continues to be the highest priority of the BSU Alumni Association. During the 1999-2000 academic year, the Alumni Association will be providing 58 \$600 scholarships totaling \$34,800. The scholarships are made possible by alumni who continue to support their alma mater by providing an annual cash donation to the BSU Foundation.

Individuals receiving Alumni Relative Scholarships for the 1999-2000 academic year included the following first year students:

- Ed Acosta, Bemidji
- Jeffrey Anderson, Solway
- Layne Backer, Blackduck
- Sarah Balstad, Bemidji
- Jennifer Barr, Spicer
- Ben Baumann, Mahnomen
- Meagen Borgman, Sauk Centre
- Justin Bundy, Brainerd
- Theresa Carleton, Baxter
- Paul Colligan, Bemidji
- Betsy Danielson, Bemidji
- Talia DeBenedet, International Falls
- Virginia Gardner, Bagley
- Heather Hall, Sartell
- Nils Hoyum, Kelliher
- Martin Humeniuk, Baudette
- Hayley Hurd, Bemidji
- Justin Johnson, Aitkin
- Scott Klicker, Menahga
- Shauna Lake, Aitkin
- Chris Lefstad, Mahnomen
- Ben Minerich, Pequot Lakes
- Jessica Otte, Cloquet
- Shari Rokke, Minneapolis
- Virginia Sandmeyer, Tenstrike
- Paula Schirmers, Pierz
- Mary Sweeney, Minnetonka
- Janell Twietmeyer, Canton, MI

Returning and transfer students receiving the Alumni Relative Scholarship include:

- Robert Anderson, Solway
- Michael Bessler, Lake George
- Cindy Bronczyk, Bemidji
- Eric Carlson, Bemidji
- Lindsey Collyard, Bemidji
- Melissa Daigle, Bemidji
- Rebecca Diffley, Bemidji
- Susan Diffley, Bemidji
- Laura Dropps, Hill City
- Jenni Eriksen, Thief River Falls
- Thomas Forte, Hibbing
- Kathleen Furlong, Hibbing
- John Gerulli, Roseau
- Alexis Grinde, East Grand Forks
- Carrie Honek, Staples
- Michelle Honga, Menahga
- Stephannie Johnson, Grand Rapids
- Justin Klander, Mountain Iron
- Nicholas Lentz, Good Thunder
- Cheri Long, Bemidji
- Melinda McCannell, Brandon, Manitoba
- Paula Maki, Calumet
- Chandelle Mohr, Sartell
- Gina Oven, Browerville
- Joshua Parks, Duluth
- Michelle Ruckdaschel, Aurora
- Stacey Stratton, Thief River Falls
- Crystal Wells, Bemidji
- John Wiederholt, Champlin
- Nathan Wisehart, Bemidji

Evergreen Club for Young Alumni Organized

The newly formed Evergreen Club, Bemidji State University's young alumni chapter of the Twin Cities, held their kick-off event on June 24 in Eagan. Club co-chairs Jennifer Thoen-Swenson and Tresa King, both 1997 graduates, organized the event with the assistance of Sue Kringen, BSU alumni director.

The Evergreen Club is an opportunity for young alumni (class of 1989 to present) in the Twin Cities area to get together to professionally network, socialize and continue their relationship with BSU. The club's mission is:

- to better serve and support recent graduates with programs and communications that are uniquely tailored to their needs;
- to foster and sustain the active involvement of young alumni in support of Bemidji State University and its Alumni Association;
- to promote the social, professional and service interests of recent alumni; and
- to encourage the development of volunteers in ways that deepen their commitment to the University and prepare them for future leadership and support.

The club has also set a number of goals including: to enhance networking and professional development; maintain and develop personal and professional relationships; to encourage pride and loyalty to Bemidji State University; and to serve as a unified voice for young alumni.

Fifty young alumni attended the June event. Surveys solicited suggestions on the role of the club, sought input on upcoming events, and recruited volunteers for committees that would increase the strength and involvement of the Club.

"It was great to catch up on old times, but I especially loved the networking potential. We have so much to offer one another," said Paul Hetland, 1995 BSU graduate.

A fall event is being planned in coordination with the Beaver Football Metrodome Classic in Minneapolis on November 14. An invitation with further details will be sent to Twin Cities area young alumni.

If you have any questions, or would like more information on the Evergreen Club, please contact King via email tking@uhc.com, or Thoen-Swenson via email thoen@daily.umn.edu.

Teacher of the Year Nominations Sought

The Professional Education Department will induct its fourth group into the Teacher of the Year Hall of Fame on April 7, 2000. In order to be considered in this round of inductees, nominations must be mailed to Dr. Ray Nelson, Professional Education Department, Bemidji State University, Bemidji, MN 56601-2699 on or before December 10, 1999.

The purpose of the award is twofold. First, the education department wishes to honor teachers and administrators who demonstrate excellence in teaching students or managing schools. Second, by displaying the award winners in a Hall of Fame in the Education-Art Building, pre-service teacher education students and pre-service administration students will be exposed to exceptional role models.

The award is called the Professional Education Department Hall of Fame Award and is granted biannually to teacher education graduates of Bemidji State University. The basic criteria for selection are:

1. The individual must have been selected as Teacher/Administrator of the Year for a public or private school district, college or university.
2. All graduates of BSU with teaching degrees from the Professional Education Department shall be eligible provided they have been selected as Minnesota Teacher/Administrator of the Year.
3. Teachers, administrators, or school board members of a district

may make nominations. Nominations must include two letters of support; one letter from a fellow teacher and one letter from an administrator or school board member (past or present). In addition, a copy of the news release or the newspaper article that announced the candidate's selection as Teacher/Administrator of the Year should be submitted.

All finalists will be asked to provide a resume. Those individuals selected to receive the award are also asked to submit an 8"x 10" color photograph for framing and placement in Education-Art Building.

All nominees who are not selected will be carried over each year and will be included in the next selection process.

The selection panel of judges is made up of faculty members, past and present. The identity of the judges is not made public in order to insure objectivity.

Past recipients of the Teacher of the Year Hall of Fame Awards include: Marge Engebretson, Rex Kingsbury, Bob Michalicek, Dennis Peterson, Elaine Ruud, Roger Schmidt, Mike Wichmann, Yvonne Wilson, Michael Hanlon, Cheryl Hoversten, Robert Hurst, James Jenner, John McClellan, Marcy Mickelson, Mary Snorek, Lloyd Styrwoll, David Thompson, Patricia Hughes, Delphine Jacobsen, Kathy Pearson, Laura Jo Pieper, Jim Wheeler and Neil Witikko.

Communiqués from alumni

AND SUE KRINGEN, DIRECTOR OF ALUMNI RELATIONS

Music Board Formed

The Department of Music is organizing an alumni advisory board this fall, and would welcome input and participation. Inquiries about this new alumni organization may be directed to: Dr. Seth Beckman, chair, Department of Music, Bemidji State University, 1500 Birchmont Drive NE, Bemidji, MN, 56601-2699. Telephone: 218/755-3928; e-mail sbeckman@vax1.bemidji.msus.edu

Class of 1959 Reunion

The class of 1959 will have its 40-year reunion during Homecoming on October 1-2. Ken Henrikson is serving as the reunion chairman and is encouraging all classmates to join him for a weekend of reminiscing, fun and nostalgia. Information regarding registration has been mailed out. Mark your calendars and plan to attend. For additional information, contact the BSU Alumni Office at 755-3989 (local calls) or call 1-877-BSU-ALUM (toll free).

Reunion for Class of 1974

The 25-year reunion of the class of 1974 is also scheduled to take place during Homecoming 1999 on October 1-2. Adele (Levchak) Munsterman will be serving as the reunion chairperson and is looking forward to getting together with all of her classmates. Registration information has been mailed and she encourages everyone to mark their calendars and plan to attend. For additional information, contact the BSU Alumni Office at 755-3989 or call 1-877-BSU-ALUM.

Beaver Gridders to Play in Metrodome

The annual Metrodome Classic will take place on November 14 at 2:30 p.m. when the BSU Beaver football team takes on Wisconsin-Stevens Point. The game will be televised by Midwest Sports Channel. Tickets will be available on gameday at the gate.

Winter Rendezvous March 12-13

The fourth annual BSU Winter Rendezvous will take place on March 12-13, 2000, in Laughlin, NV. The event, sponsored by the BSU Alumni Association, includes an opening reception, lodging at the Colorado Belle Hotel and Casino, a BSU winter golf classic tournament and a finale banquet and awards ceremony. Alumni and current or former Bemidji residents are invited to participate. Look for registration information in the mail or, for further information, contact the BSU Alumni Office at 1-877-BSU-ALUM.



Bemidji State University BSU Homecoming 1999

Rock, Roll & Reminisce!

Be there or be square!

SUNDAY, SEPTEMBER 26

7:00 PM **Silver Feather Festival**
- A celebration of Native American Women in Music. Thompson Recital Hall; \$15/person.

TUESDAY, SEPTEMBER 28

At Dusk **Drive-In Movie**; North Side of Walnut Hall; no charge (In case of inclement weather, movie will be moved indoors to the Beaux Arts Ballroom).

WEDNESDAY, SEPTEMBER 29

7:00 PM - **Traditional Homecoming Pepfest!** Entertainment by "Eric E"; Coronation of 1999 BSU Homecoming King & Queen, PE Gymnasium; no charge.

FRIDAY, OCTOBER 1

9:00 AM - 4:00 PM **David Park House; Open house** with tours available; coffeepot is on.
11:00 AM - 1:00 PM **"Rock, Roll & Reminisce"** Individual Contests (hula hoop, etc.).
6:00 - 10:00 PM **Reunions of the Classes of 1959 and 1974;** opening receptions.

SATURDAY, OCTOBER 2

8:00 AM **Tom Rowlette Memorial Alumni Run;** join friends, family and BSU alums for an early morning run along beautiful Lake Bemidji; choose your own distance; meet at the BSU Gillett Recreation & Fitness Center in your running shoes.

❖ **8:00 - 10:30 AM BSU Alumni Association Pre-Game Breakfast & Pepfest: Continental Breakfast;** David Park House; free with Homecoming button or \$2/person without button.
10:00 AM - 3:00 PM **David Park House Open;** tours available; coffeepot is on.
11:00 AM **BSU Alumni Association Honors Luncheon;** join alumni and friends of Bemidji State University as the 1999 BSU Outstanding Alumni and Honorary Alumni Awards are presented; Beaux Arts Ballroom in the BSU Hobson Memorial Union; \$10/person (RSVP required, use registration form below).

11:00 AM to Gametime **"Bemidji State University Homecoming Tailgate Party"** hosted by Beaver Pride; Diamond Point Park.
1:30 PM **Traditional BSU Homecoming "Football Game"** - the BSU Beavers host to Concordia College of St. Paul at the Chet Anderson Stadium; tickets available at the game.
❖ **4:00 - 7:00 PM "Fifth Quarter Alumni Reception and Silent Auction"** co-sponsored by the BSU Alumni Association and KBUN AM / KB101 FM / KZY FM Radio; "Rock, Roll and Reminisce" with friends, former classmates, faculty, and staff; complimentary hors d'oeuvres provided; many door prizes; cash bar; Beaux Arts Ballroom in the BSU Hobson Memorial Union; free with Homecoming button or \$2/person without button.
9:00 PM - Midnight **Dance to Johnny Holm;** John Glas Fieldhouse; tickets available at the door; students \$5 with BSU ID, non-students \$7.

SUNDAY, OCTOBER 3

3:00 P.M. **Carl O. Thompson Memorial Concert;** Beaux Arts Ballroom, tickets available at the door.

Additional Events and Activities taking place during Homecoming:

Campus Bookstore Hours:

Monday - Friday, 8:00 AM - 4:30 PM / Saturday 9:00 AM - 2:00 PM

Campus Tours:

Weekdays, 10:00 AM & 1:00 PM; BSU Admissions Office (218) 755-2040.

Gillett Recreation & Fitness Center:

Open Friday 7:00 AM - 9:00 PM; Saturday 9:00 AM - 9:00 PM and Sunday 11:00 AM - 9:00 PM. Come enjoy a great workout with family and friends at the Gillett Recreation and Fitness Center during Homecoming Weekend. Simply show your BSU Alumni membership card at the door and you and your family will be admitted free of charge or stop by the Alumni Office to pick up a pass.

Voting for BSU Homecoming Royalty:

Monday: 11:00 AM-1:00 PM; Lower Hobson Memorial Union 4:30 - 6:30 PM; Walnut Hall. Tuesday: 11:00 AM-1:00 PM; Lower Hobson Memorial Union 4:30 - 6:30 PM; Walnut Hall

KB101/KBUN Chat-a-bout:

Wednesday, Thursday and Friday; 12:30 PM Locations across campus

❖ PLEASE NOTE Events and activities highlighted with ❖ are free with the purchase of a Homecoming Button! Homecoming Buttons will be sold throughout Homecoming week and are available at the David Park House for \$2.00 each.

ADVANCE RESERVATION FORM

Name: _____

Years attended BSU: 19 ____ to 19 ____

Name of Spouse: _____

Years attended BSU: 19 ____ to 19 ____

Address: _____

City: _____ State _____ Zip _____

Home Phone: (_____) _____

E-mail Address _____

BSU Alumni Honors Luncheon # _____ @ \$10/person. = \$ _____

TOTAL = \$ _____

ADMISSION TO ALL OTHER EVENTS IS AVAILABLE AT THE DOOR!

Enclosed is a check made payable to The BSU Alumni Association.

Please credit total to my credit card: Visa MasterCard

Account #: _____ Expiration Date: _____

Advance reservations must be received by Monday, September 20, 1999.

Mail reservation form and payment to:
ALUMNI OFFICE, Bemidji State University,
1500 Birchmont Drive NE #DPH, Bemidji MN
56601-2699.

Registrations will be accepted over the phone if payment is being made via a credit card.

Call the BSU Alumni Association Office at:
755-3989 (local) or
1-877-BSU-ALUM (toll free).

IMPORTANT NOTE: The Alumni Association Honors Luncheon has limited seating available. RSVPs are required and MUST be made in advance in order to attend. NO EXCEPTIONS!! Reservations must be received by September 20, 1999. All other events have tickets available at the door.