

PREDESIGN

Open Forum

October 14, 2014

NEXT STEPS

▪ Information Gathering

- Conduct stakeholder meetings to determine office & instructional program needs:
 - September 17, 2014
 - September 24, 2014
 - October 1, 2014
 - October 13 or 15, 2014
- Conduct ongoing steering committee meeting to consider options & determine optimal concept
- Deadline for feedback before final submittal is October 15, 2014. Written feedback can be sent to Dr. Patrick Guilfoile, Bill Maki, and Bruce Cornwall (Bruce.Cornwall@lhbcorp.com)

▪ Prepare Documentation/Submit for Review & Approval by MnSCU

- Initial submittal: Early August (*Completed*)
- Draft submittal: Mid-September (*September 26th*)
- Final Submittal: October 17th

PREDESIGN DEFINITION – IS THIS “FINAL,FINAL”?

▪ Definition of a Predesign

- The fundamental purpose of a predesign is to describe the specific project request and answer the basic questions of scope, schedule, and cost.

▪ Examples of Program Changes in Projects that changed after Predesign or Schematic Design

- Memorial/Decker Hall project
 - Layout of classrooms/labs
 - 360/Optivation/SBDC Offices
 - Nursing Lab location
 - TRIO Location from Memorial Hall to Decker Hall
 - Location of Faculty Offices
- Sattgast project
 - Mechanical Room relocation
 - Addition of Sattgast 248

APPROPRIATIONS | Preliminary – September 26, 2014

	2014	Suggested 2016	Preliminary 2016 (LO)	Preliminary 2016 (HI)
Design Fees	\$750,000		\$375,000	\$425,000
Project Management	\$250,000	\$240,000	\$225,000	\$250,000
Construction		\$8,500,000		
Building		* ** \$7,000,000	\$10,730,000	\$12,690,000
Site		\$500,000	\$450,000	\$500,000
Demolition		\$250,000	\$450,000	\$500,000
Contingency		\$750,000	\$800,000	\$900,000
Construction Management		\$480,000	\$700,000	\$800,000
Art		\$80,000	\$100,000	\$100,000
Occupancy		\$700,000	\$625,000	\$700,000
Total	\$1,000,000	\$10,000,000	\$14,455,000	\$16,865,000

* Budget costs for new university classroom facilities
 ≈ **approximately** \$275-300/SF

** Budget costs for renovated university classroom facilities ≈ **approximately** \$100-125/SF

APPROPRIATIONS | Preliminary – October 14, 2014

	2014	Preliminary 2016	Proposed 2016
Design Fees (9.5%)	\$884,000		\$295,000
Project Management (5%)	\$116,000	\$240,000	\$530,000
Construction		\$8,500,000	
Building		\$7,000,000	\$11,693,000
Site		\$500,000	\$400,000
Demolition		\$250,000	\$574,000
Contingency (8%)		\$750,000	\$1,000,000
Construction Management (5%)		\$480,000	\$625,000
Art (1%)		\$80,000	\$100,000
Occupancy (6%)		\$700,000	\$775,000
Total	\$1,000,000	\$10,000,000	\$15,992,000

* Budget costs for new university classroom facilities
 ≈ **approximately** \$250-270/SF

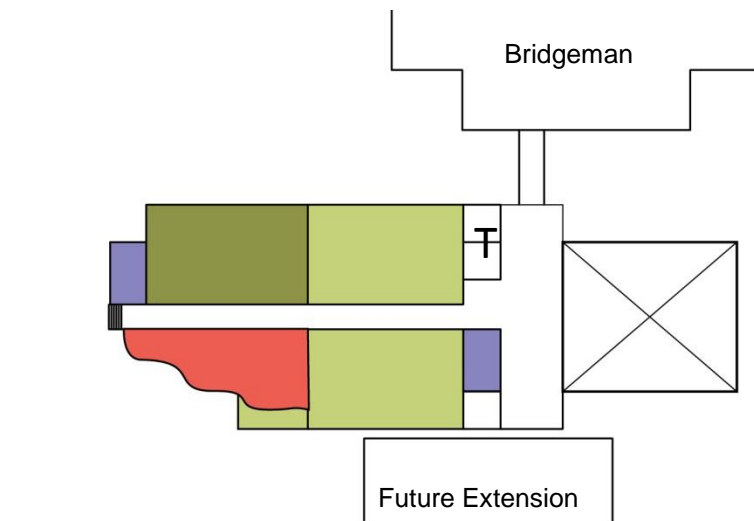
** Budget costs for renovated university classroom
 facilities ≈ **approximately** \$85-105/SF

Changes to classroom numbers

Room capacity	Current number of classrooms	Planned number of classrooms
0-19	1	1
20-29	9	3
30-49	38	21
50-99	5	7
100+	8	8

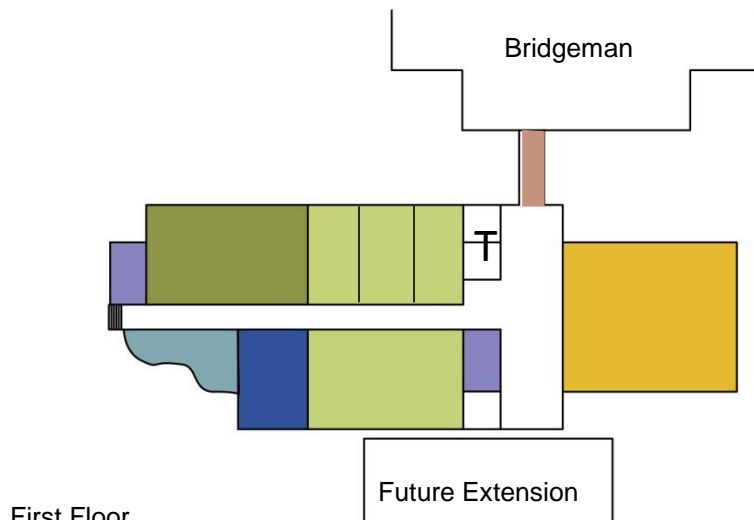
Current space utilization- classrooms only (code 110)	Planned space utilization- classrooms only (code 110)
~21 hours per week	~30 hours per week

CLASSROOM BUILDING DIAGRAM | Preliminary



Second Floor

- Classrooms
- Active Learning Classrooms
- Faculty Resource Center/Admin. Support
- Study Lounge
- Support
- Vertical Circulation
- Auditorium
- Skyway
- Computer Lab



First Floor

Active Learning	2	1,200 SF (EA)	54 Seats (EA)
Large Classroom	3	2,500 SF (EA)	125 Seats (EA)
Small Classrooms	3	800 SF (EA)	40 Seats (EA)
Lecture Hall 1	1	4,000 SF (EA)	350 Seats (EA)
Computer Lab 1	1	800 SF (EA)	32 Seats (EA)

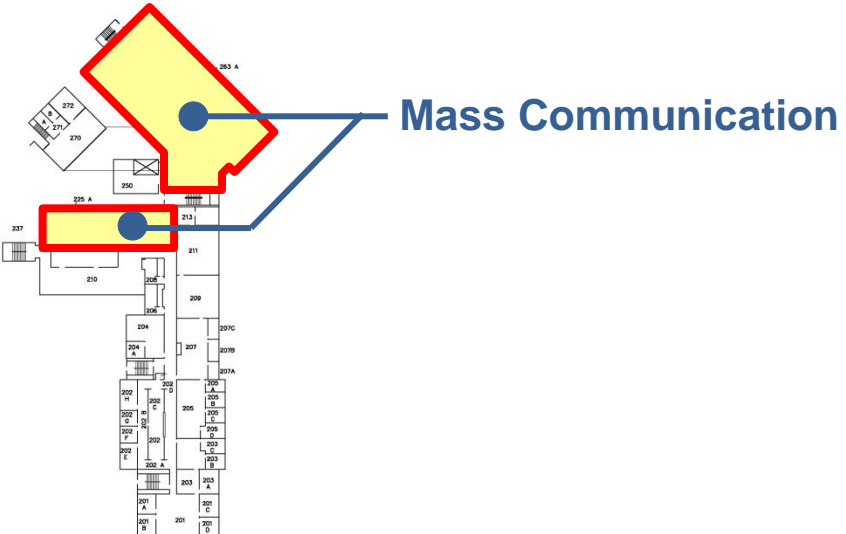
PROGRAM LOCATION MATRIX | Preliminary

	Current	Proposed	Other?
Geography	Hagg-Sauer	Sattgast	
English	Hagg-Sauer	Bangsberg	
History	Hagg-Sauer	Bangsberg	
Political Science	Hagg-Sauer	Sattgast	
Psychology	Hagg-Sauer	Bensen	
Philosophy	Hagg-Sauer	Bangsberg	
Social Work	Hagg-Sauer	Bensen	
Sociology	Hagg-Sauer	Sattgast	
Math	Hagg-Sauer	Sattgast	
Computer Science	Hagg-Sauer	Sattgast	
Language	Hagg-Sauer	Bangsberg	
Special Programs Center	Hagg-Sauer	Classroom Building	Sattgast

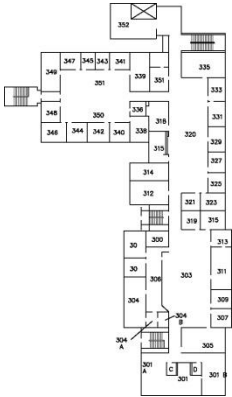
PROGRAM: LEARNING COMMUNITIES | Preliminary

Space	STEM	SS	HUM	SOC. WRK/ PSYCH	LRN COMM	MUSIC	ALC	MASS COMM
1. Offices	(12) 1,320	(9) 990	(27) 2,970	(15) 1,650				
2. Workrooms	150	300	(2) 600	(2) 300				
3. Conference	200	400	(3) 1,800	200				
4. Storage	110	(2) 440	(3) 990	110				
5. Hoteling	220	220	220	110				
6. Learning Co-Op	250	500	1,000	500				
7. Language Lab			560					
8. Math Library	200							
9. Planning Lab		200						
10. Cartography		200						
11. Physical Geography		400						
12. Practicum Suite				1,000				
13. Learning Commons					20,630			
14. Map Library					775			
15. Student Study Center	400						800	
16. Special Programs Center							800	
17. Faculty Resource Center							800	
18. Active Learning							(2) 2,400	
19. Large Classroom			(2) 2,570	(2) 2,340			(3) 7,500	
20. Small Classroom							(3) 2,400	
21. Lecture Hall							4,000	
22. Computer Lab	(2) 1,960	960			900		800	
TOTAL (in Square Feet, SF)	4,810	4,280	8,550	6,630	22,305	6,470	19,500	9,341

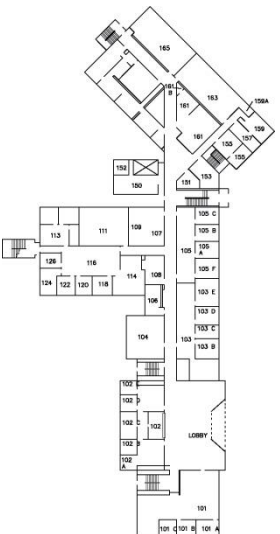
PROGRAM: LEARNING COMMONS | Deputy Hall | Preliminary



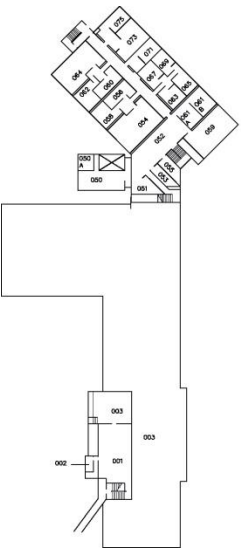
Second Floor



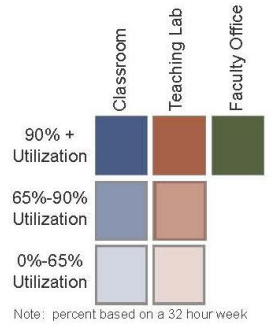
Fourth Floor



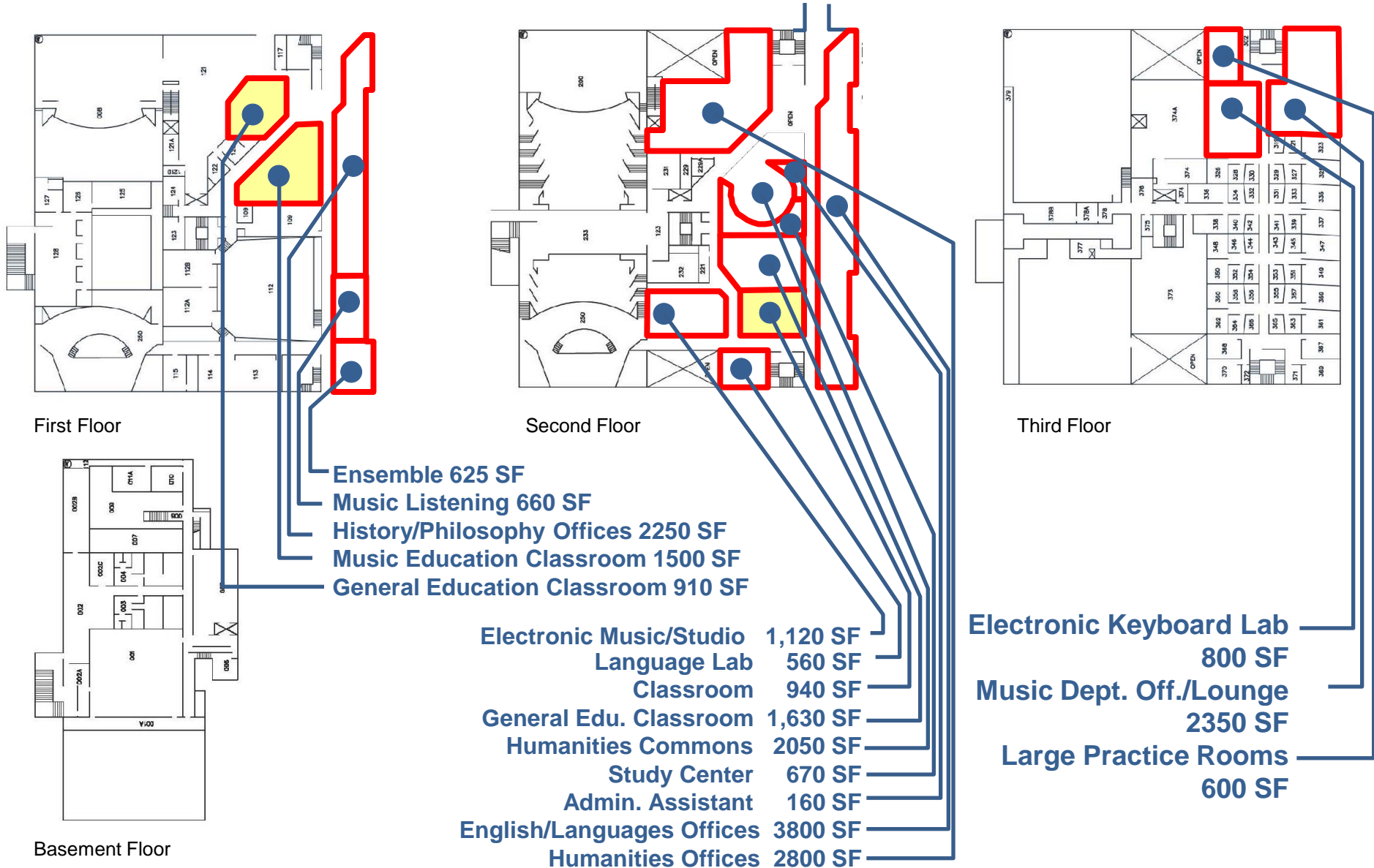
First Floor



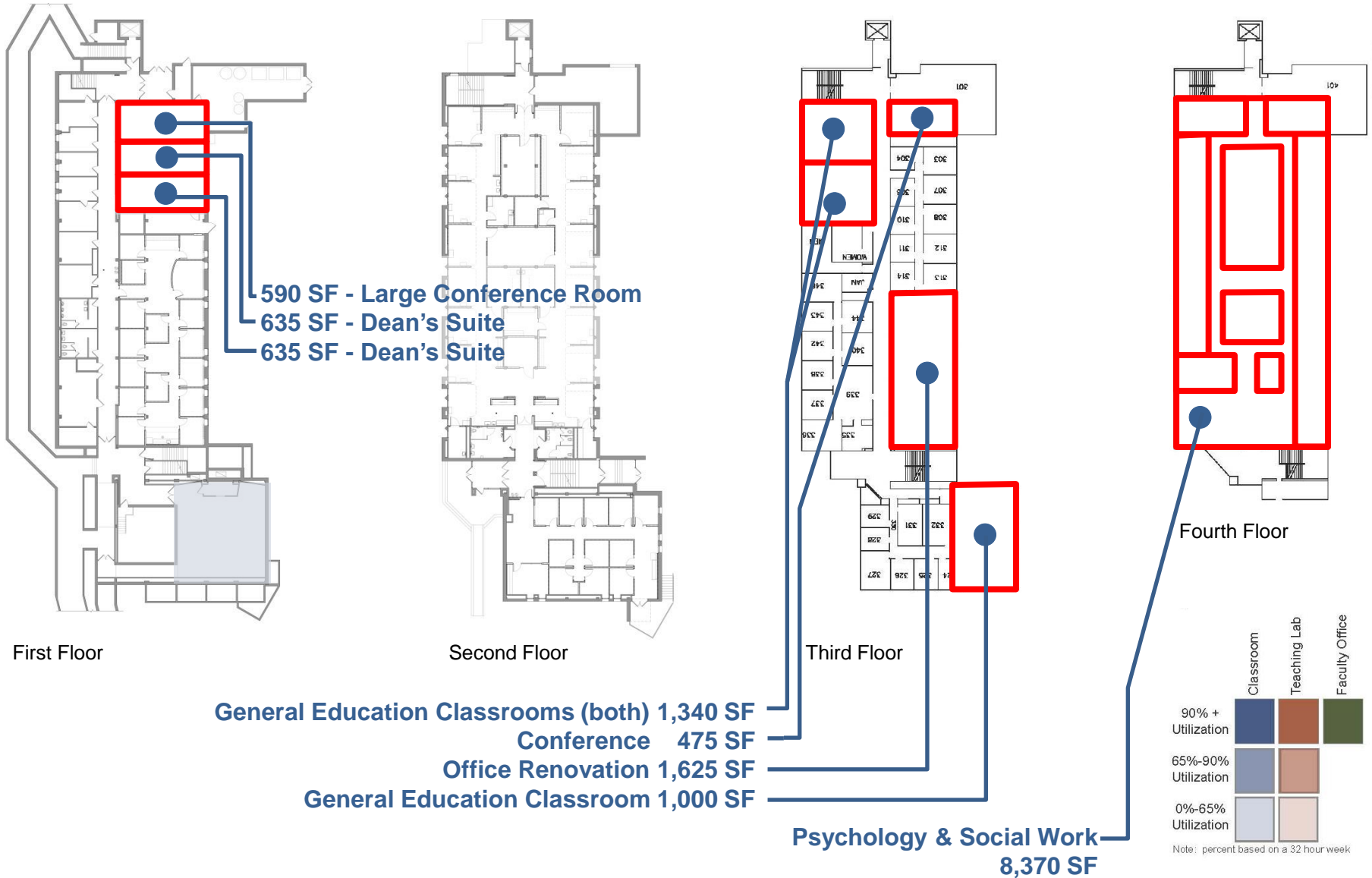
Basement



PROGRAM: LEARNING COMMONS | Bangsberg | Preliminary



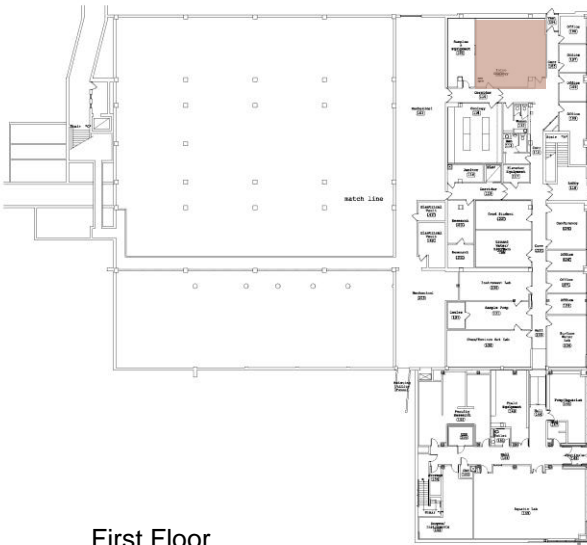
PROGRAM: LEARNING COMMONS | Bensen Hall | Preliminary



PROGRAM: LEARNING COMMONS | Sattgast | Preliminary



Second Floor



First Floor

STEM LC: Mathematics & Computer Science
2,950 SF

Computer Lab (40) 1,030 SF

Study Center 800 SF

Conference Room 500 SF

Computer Lab (32) 930 SF

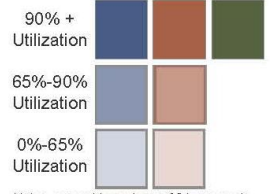
Geography Labs 1,285 SF

**Social Science Learning Co-Op
(Geography, Sociology, Political Science) 2,100 SF**



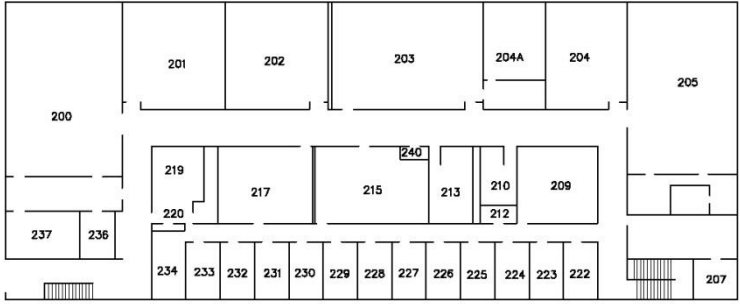
Third Floor

Classroom
Teaching Lab
Faculty Office

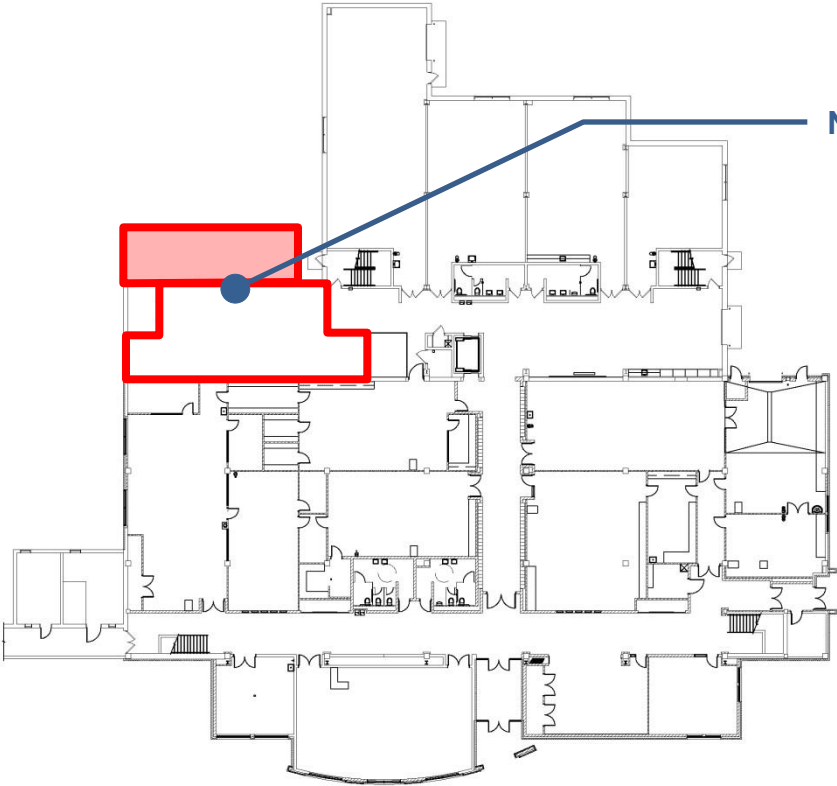


Note: percent based on a 32 hour week

PROGRAM: LEARNING COMMONS | Bridgeman Hall | Preliminary

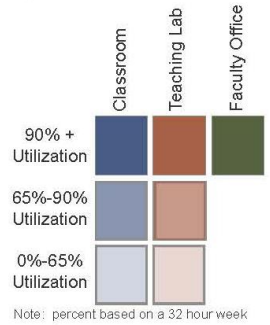


Second Floor



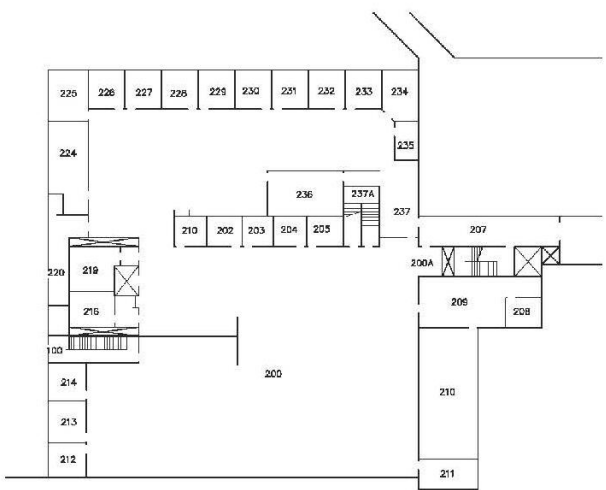
First Floor

New Ceramics Studio Area 700 SF (New)
 1,515 SF (Renovated)

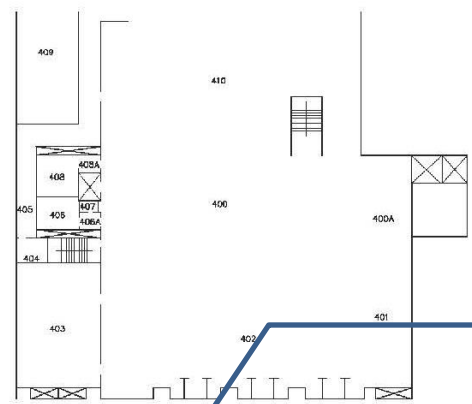


Note: percent based on a 32 hour week

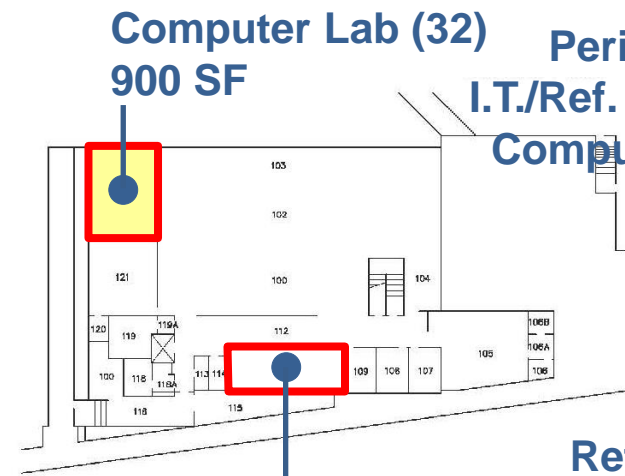
PROGRAM: LEARNING COMMONS | A.C. Clark Library | Preliminary



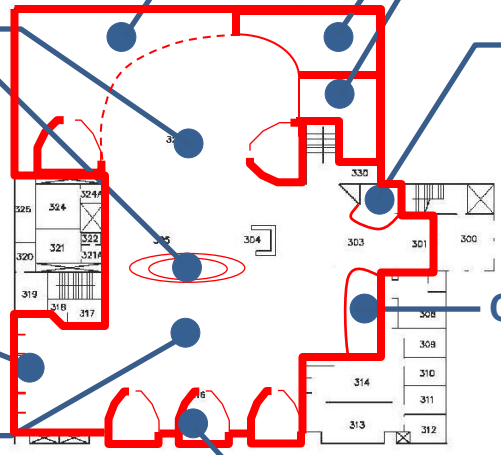
Second Floor



Fourth Floor



First Floor



Third Floor
25,500 SF

Collaborative Zone

Writing Center
Tutoring/Assistive
Technology
Coffee Shop

Periodicals
I.T./Ref. Center,
Computer Bar

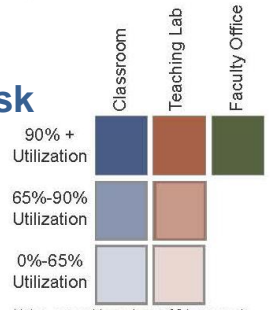
Study
Carrels
Reference

Circulation Desk

Media Supported
Group Study

Computer Lab (32)
900 SF

Map Library
775 SF



Note: percent based on a 32 hour week



THANK YOU!