

Bemidji State University Academic Learning Center & Campus Renovation

February 4, 2015





SCHEMATIC DESIGN RENDERING

BSU ACADEMIC LEARNING CENTER & CAMPUS RENOVATION

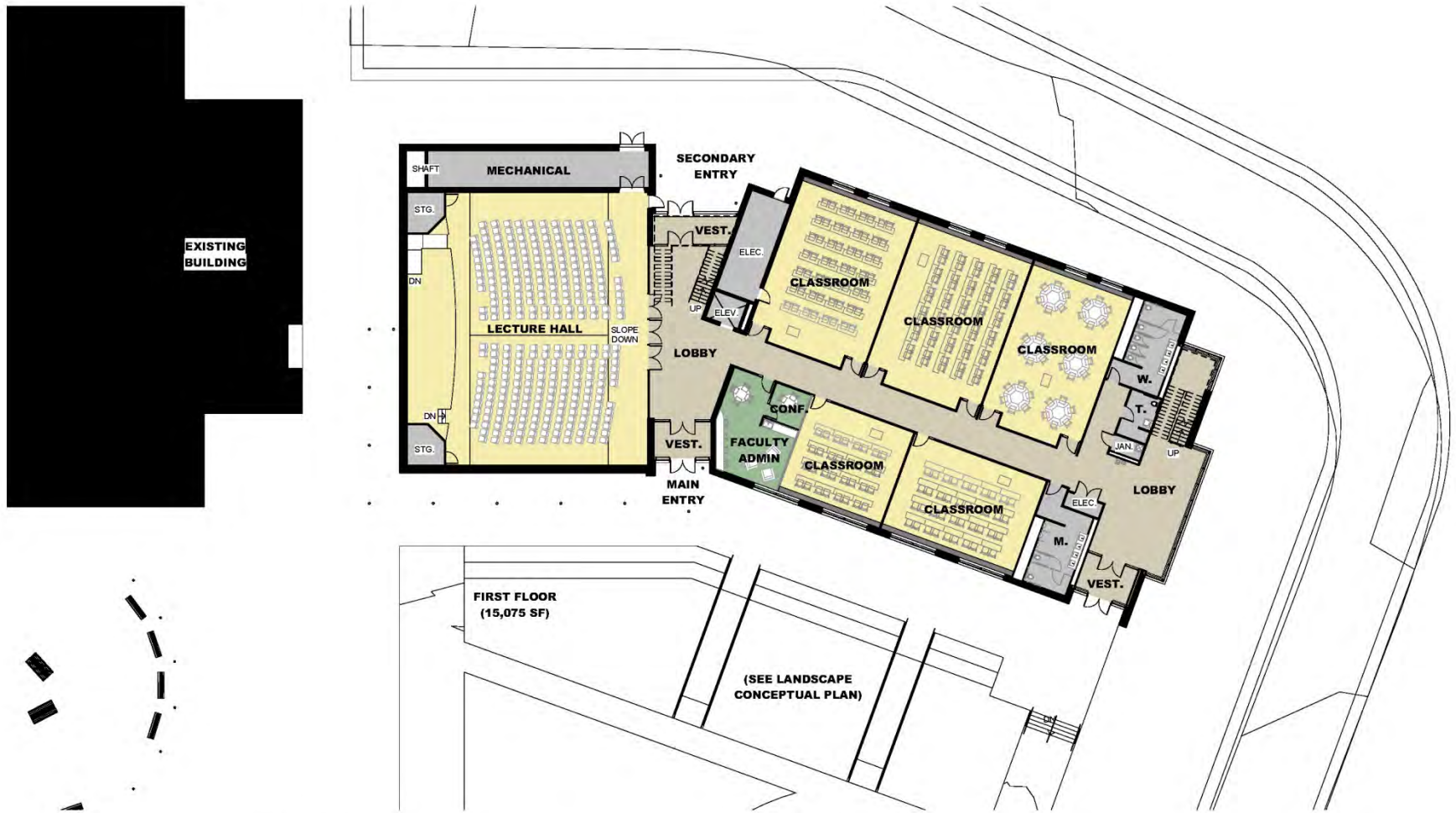
Bentz / Thompson / Rietow



SCHEMATIC DESIGN RENDERING

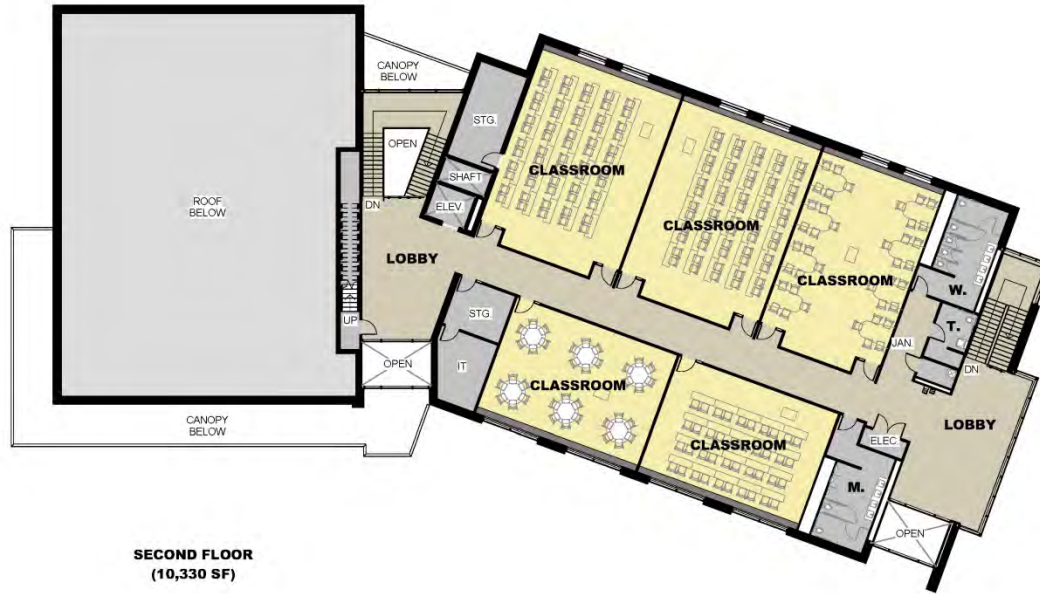
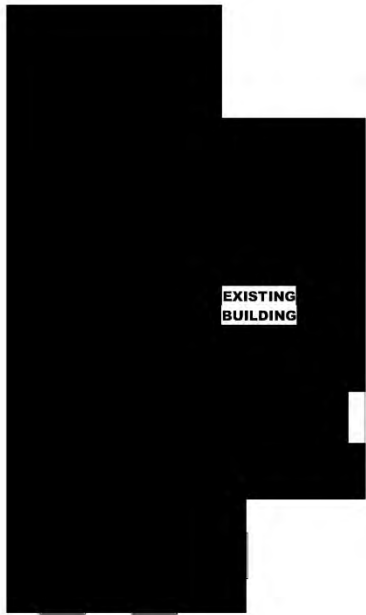
BSU ACADEMIC LEARNING CENTER & CAMPUS RENOVATION

Bentz / Thompson / Rietow

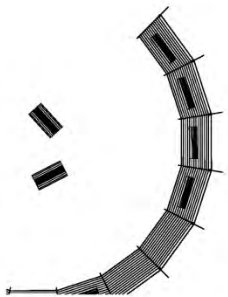


1 FIRST FLOOR PLAN
1/16" = 1'-0"

SCHEMATIC DESIGN FIRST FLOOR PLAN

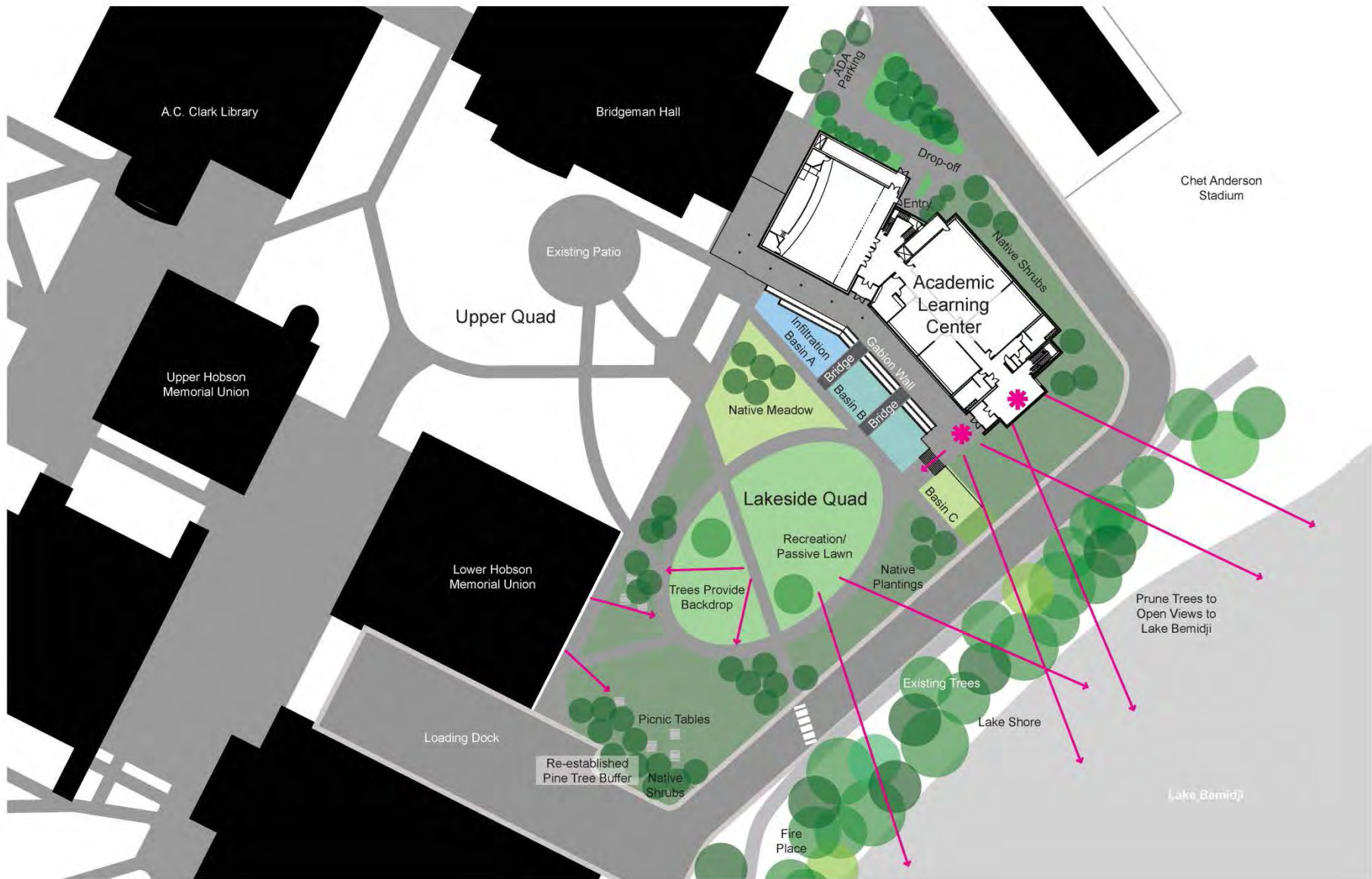


SECOND FLOOR
(10,330 SF)



1 SECOND LEVEL FLOOR PLAN
1/16" = 1'-0"





SCHEMATIC DESIGN LANDSCAPE/SITE CONCEPT

Final Schematic Design (SD) – MnSCU Review and Approval

Consider during Design Development:

- Sun Shades (Solar Control)

- Size of Mechanical Penthouse

- Increase Break out space for Auditorium

- Consider Enclosing Canopy

Construction Budget/Estimate:

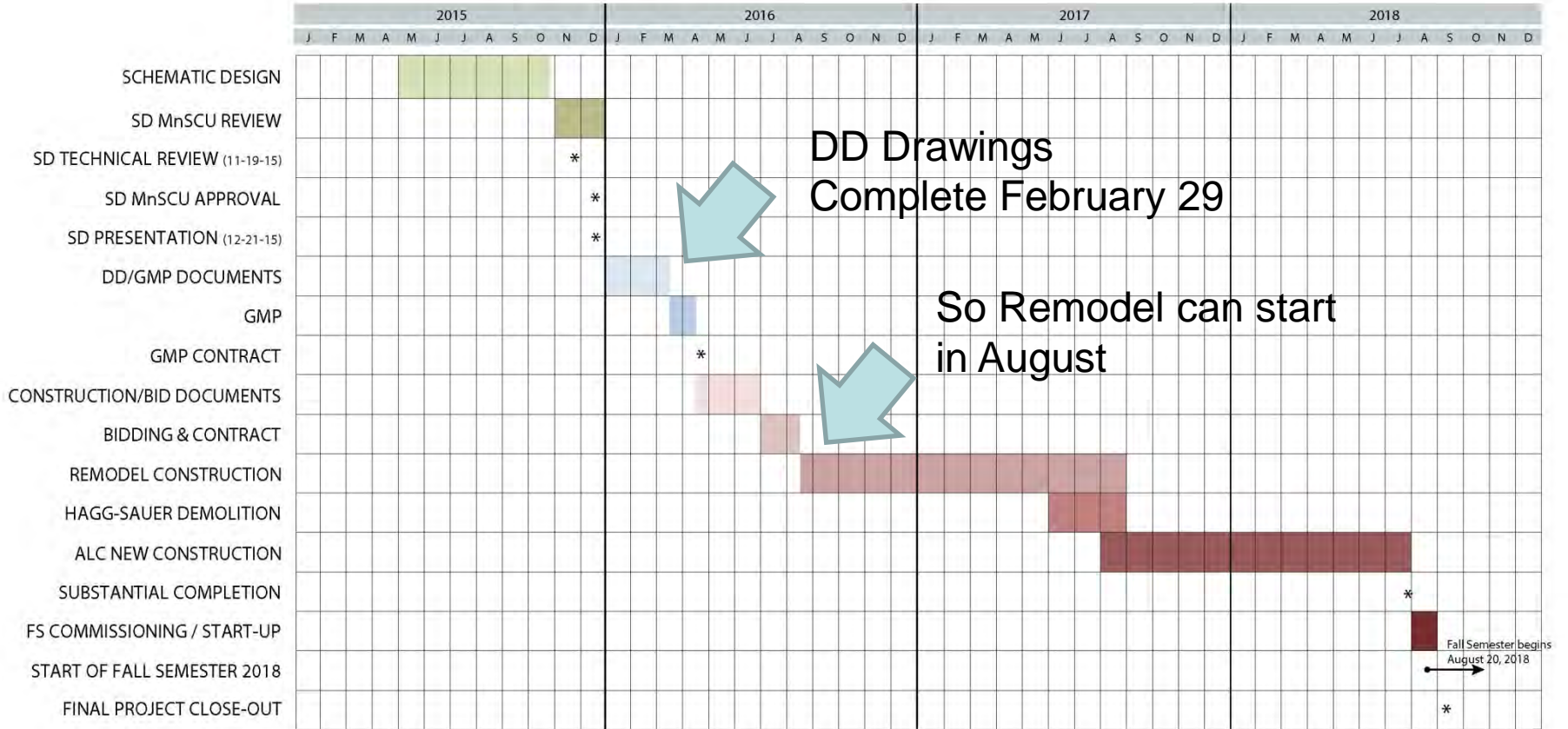
- 13M New Construction ALC

- \$2M Renovations BE, BB, SG, and CL

Schedule

PROJECT SCHEDULE

BSU Academic Learning Center & Campus Remodeling



Project Schedule – Design Development/GMP

Dec. 30 DD Kick-Off Meeting

Weekly coordination meetings

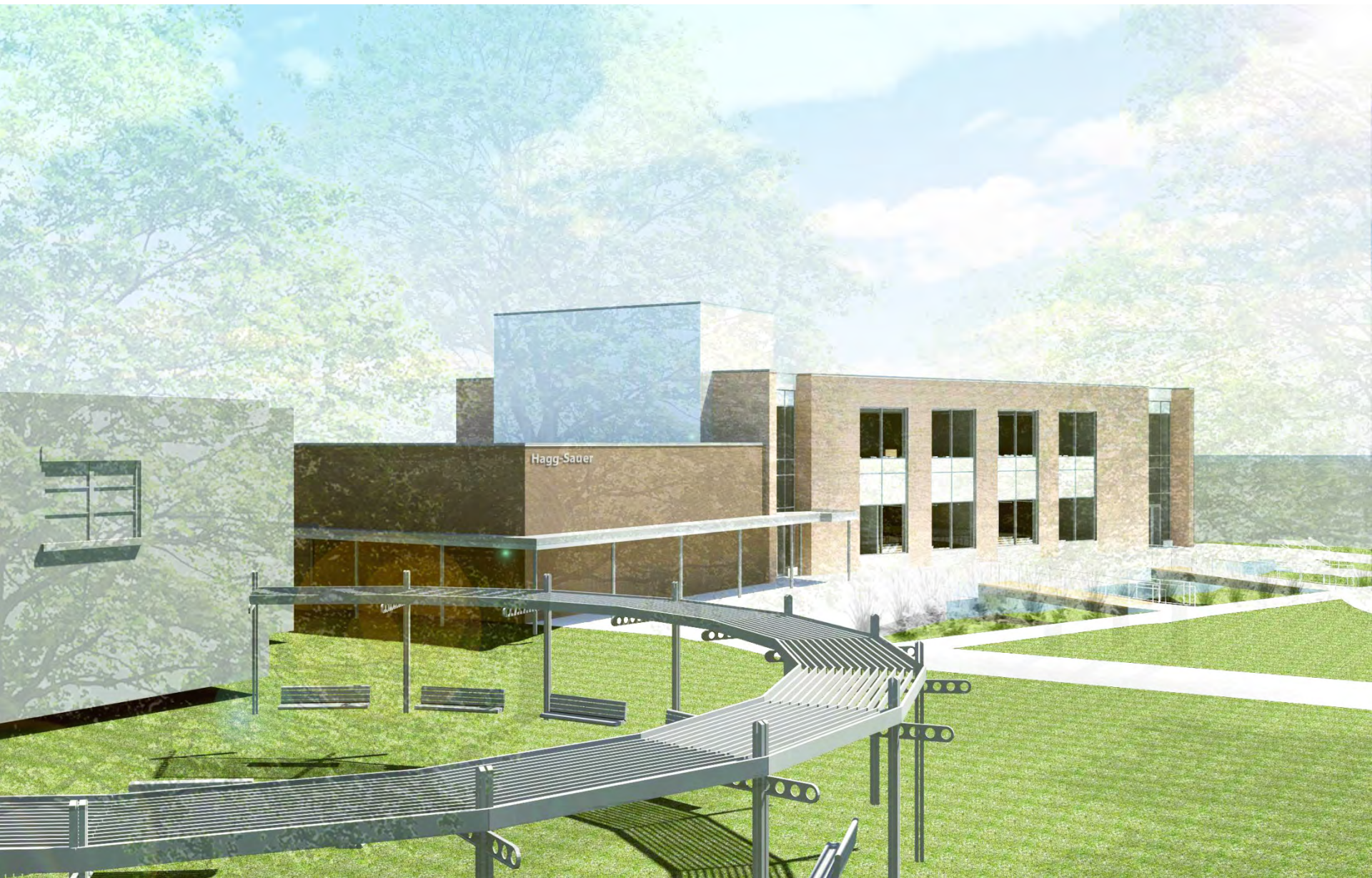
Jan. 29 DD 50% Check Set for cost check

Feb. 26 DD/GMP Documents Complete

Feb. 29 –
Mar. 21 GMP and DD Cost Estimate

Mar. 21-25 Review & Reconcile Costs

Mar. 21-31 GMP



SCHEMATIC DESIGN RENDERING

BSU ACADEMIC LEARNING CENTER & CAMPUS RENOVATION

Bentz / Thompson / Rietow



① QUAD TO MAIN ENTRY - AHU-2 AT PENTHOUSE



② ROAD TO BACK ENTRY - AHU-2 AT PENTHOUSE



③ QUAD TO MAIN ENTRY - AHU-2 AT GROUND FLOOR



⑤ ROAD TO BACK ENTRY - AHU-2 AT GROUND FLOOR



④ QUAD TO MAIN ENTRY - AHU-2 AT GROUND FLOOR W/ ROTATED PENTHOUSE



⑥ ROAD TO BACK ENTRY - AHU-2 AT GROUND FLOOR W/ ROTATED PENTHOUSE

DESIGN DEVELOPMENT – PENTHOUSE OPTIONS



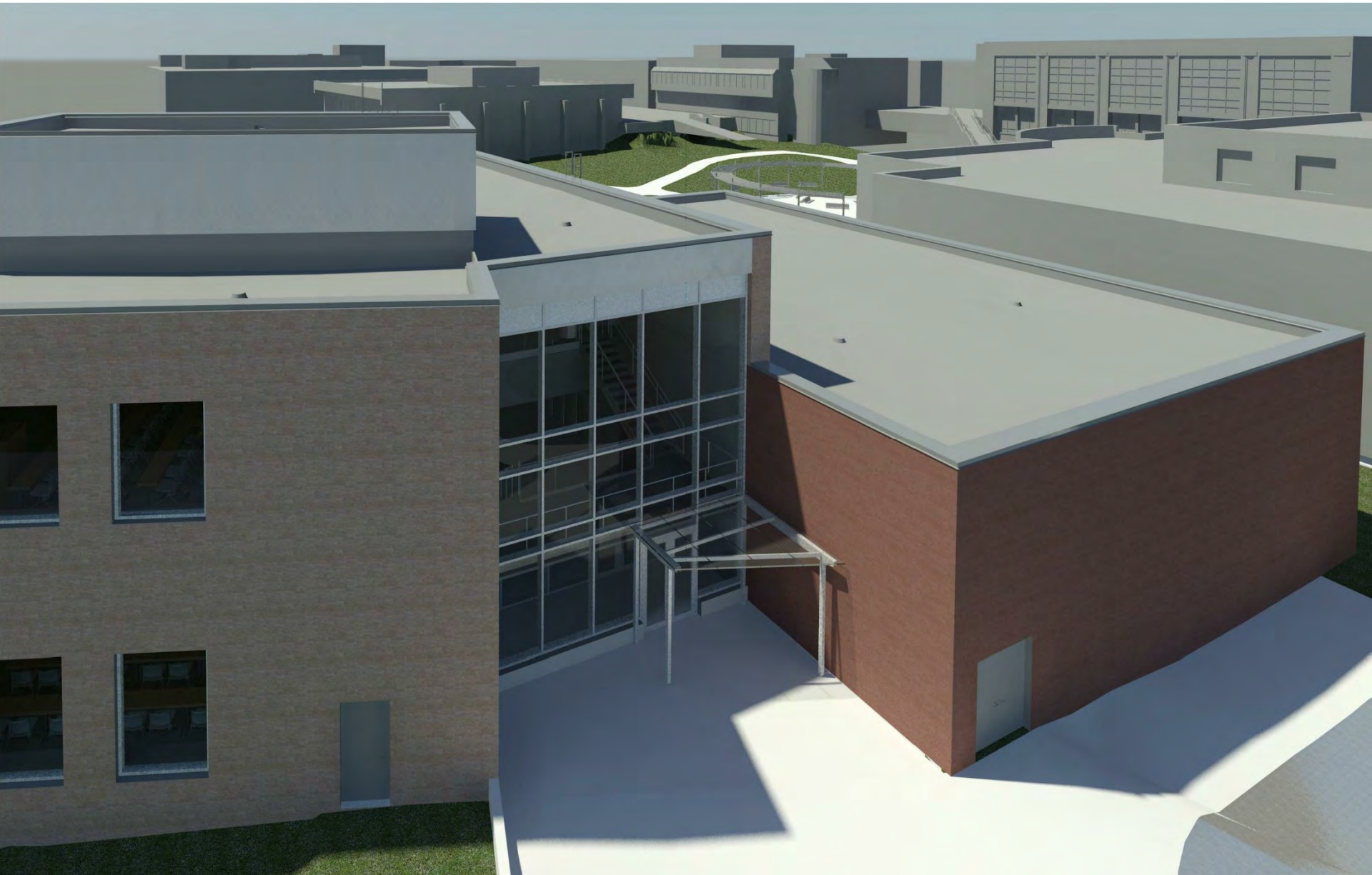
DESIGN DEVELOPMENT RENDERING – NEW

BSU ACADEMIC LEARNING CENTER & CAMPUS RENOVATION

Bentz / Thompson / Rietow

- \$165,427.00** Original Add Alternate to add the covered walkway from the West entrance of ALC to Bridgeman
- \$380,440.00** Construct for “future enclosure” (i.e. strip footings, foundations, Masonry, Waterproofing, earthwork, BUR, etc)
- \$677,505.00** Construct fully enclosed walkway.

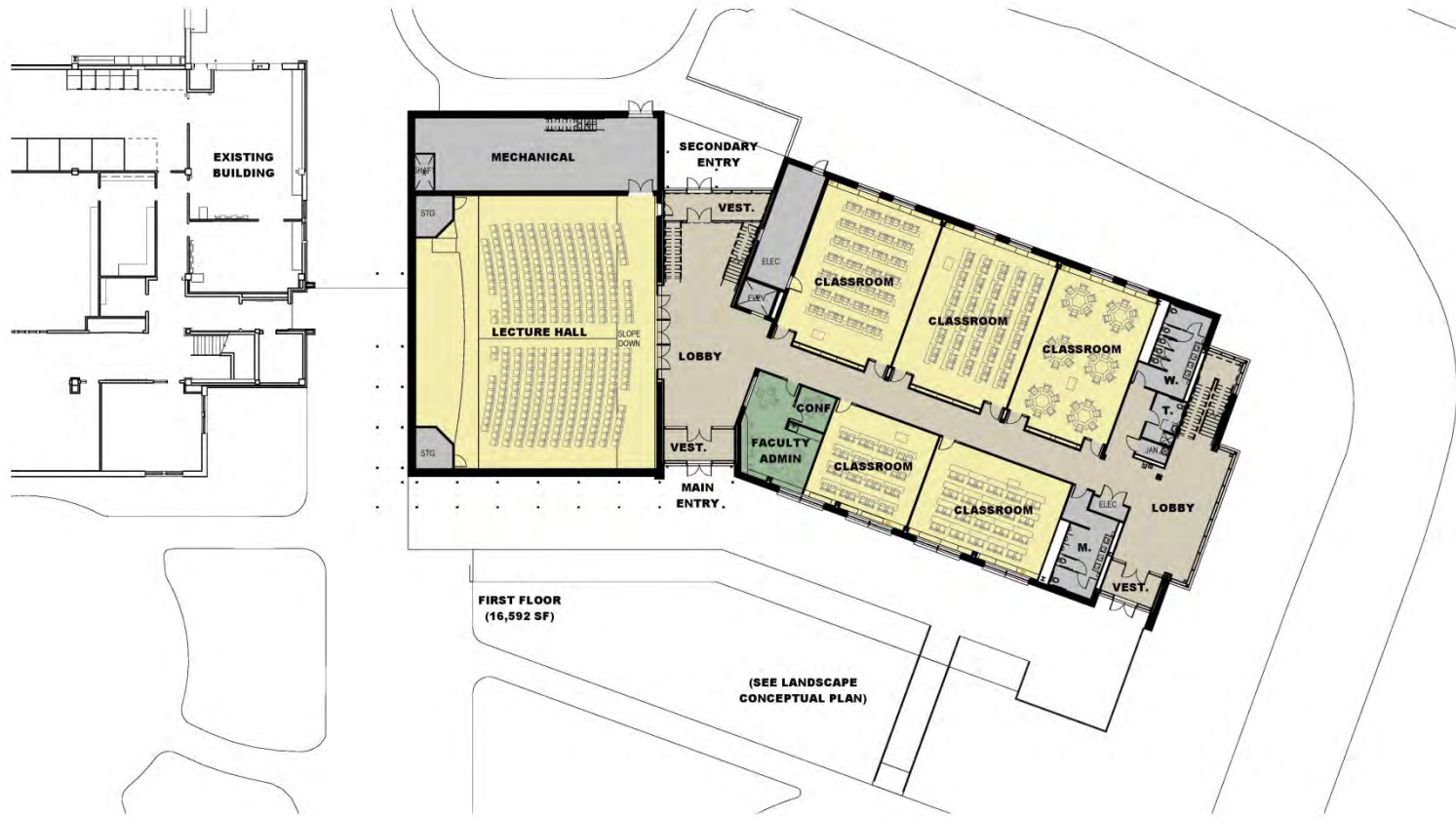




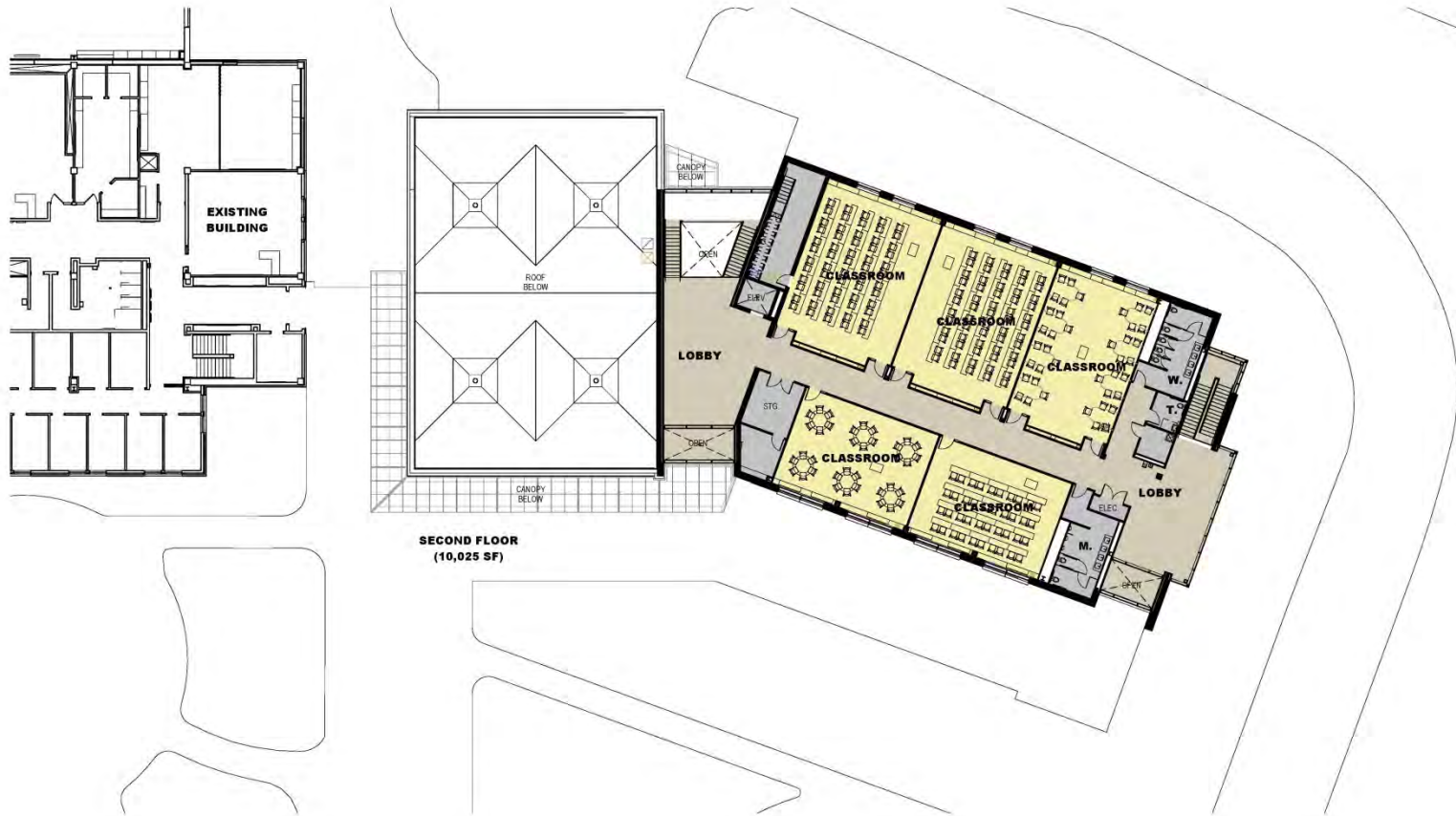
DESIGN DEVELOPMENT RENDERING – NEW

BSU ACADEMIC LEARNING CENTER & CAMPUS RENOVATION

Bentz / Thompson / Rietow



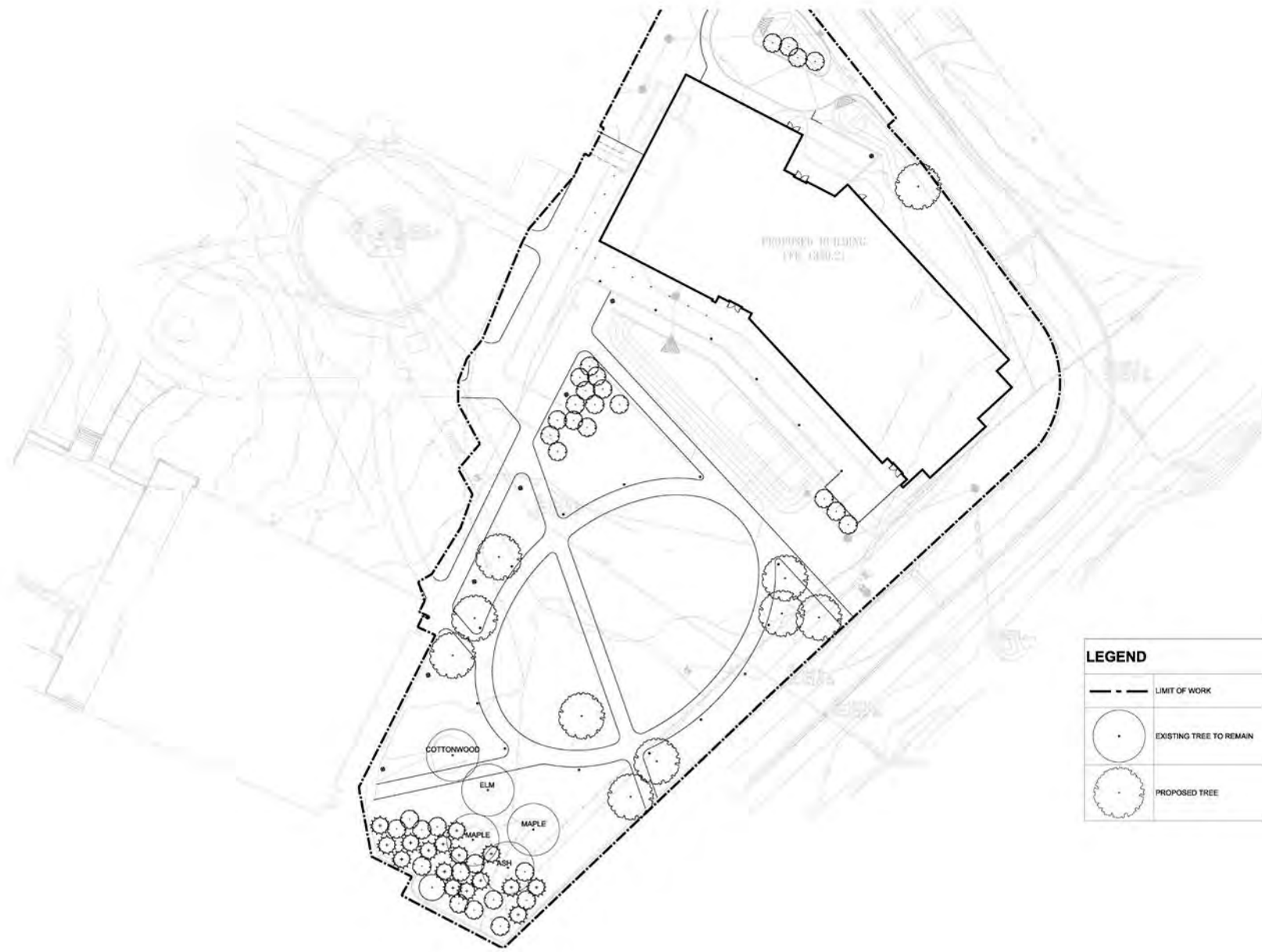
DESIGN DEVELOPMENT FIRST FLOOR PLAN






**SECOND FLOOR
(10,025 SF)**

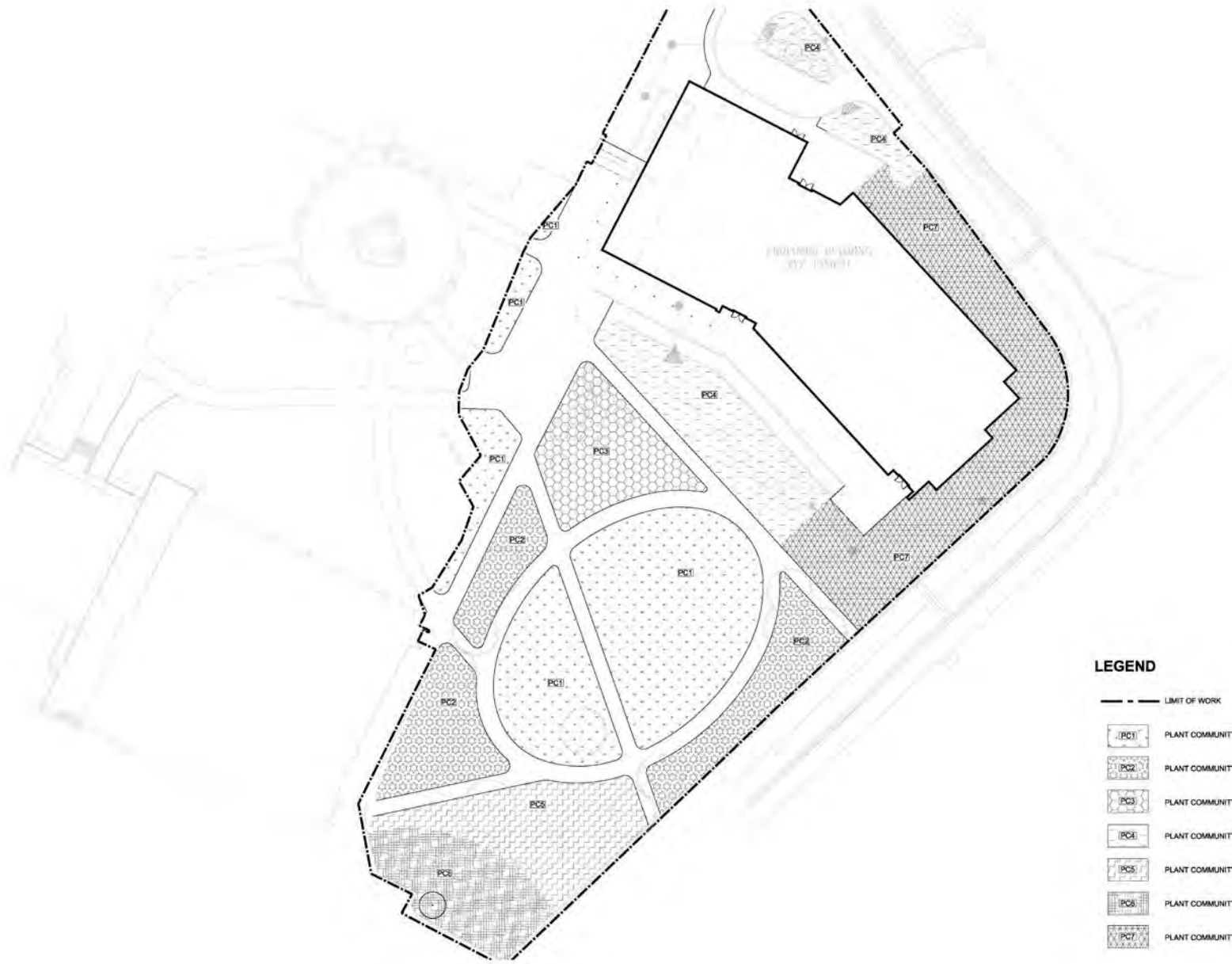


DESIGN DEVELOPMENT SITE/LANDSCAPE PLAN



LEGEND	
	LIMIT OF WORK
	EXISTING TREE TO REMAIN
	PROPOSED TREE

DESIGN DEVELOPMENT TREE PLANTING PLAN

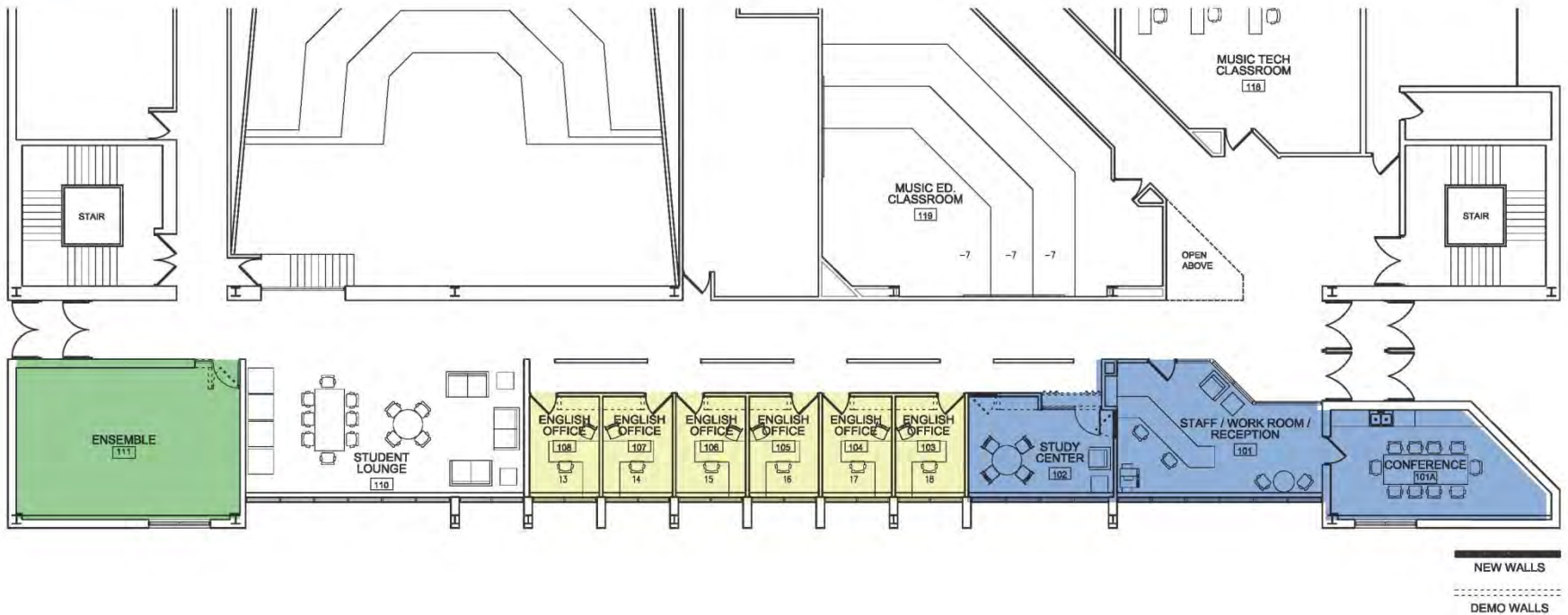
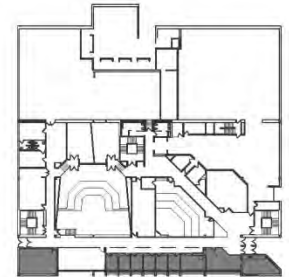


LEGEND

- LIMIT OF WORK
- [PC1] PLANT COMMUNITY TYPE 1
- [PC2] PLANT COMMUNITY TYPE 2
- [PC3] PLANT COMMUNITY TYPE 3
- [PC4] PLANT COMMUNITY TYPE 4
- [PC5] PLANT COMMUNITY TYPE 5
- [PC6] PLANT COMMUNITY TYPE 6
- [PC7] PLANT COMMUNITY TYPE 7

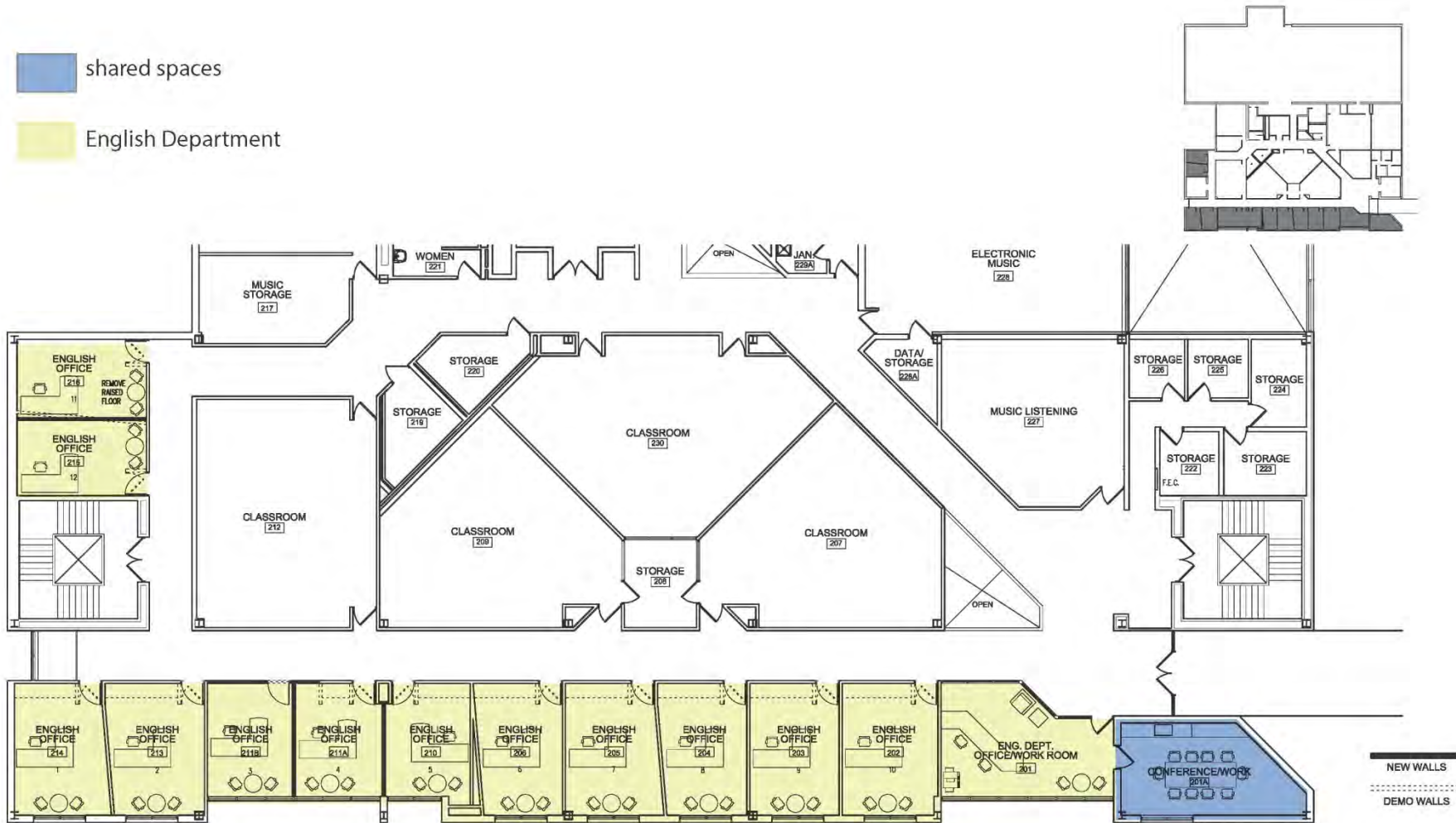


- shared spaces
- English Department
- Music Department

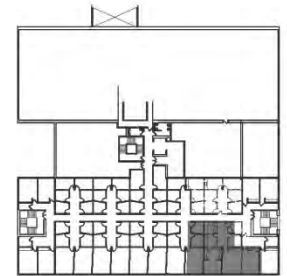
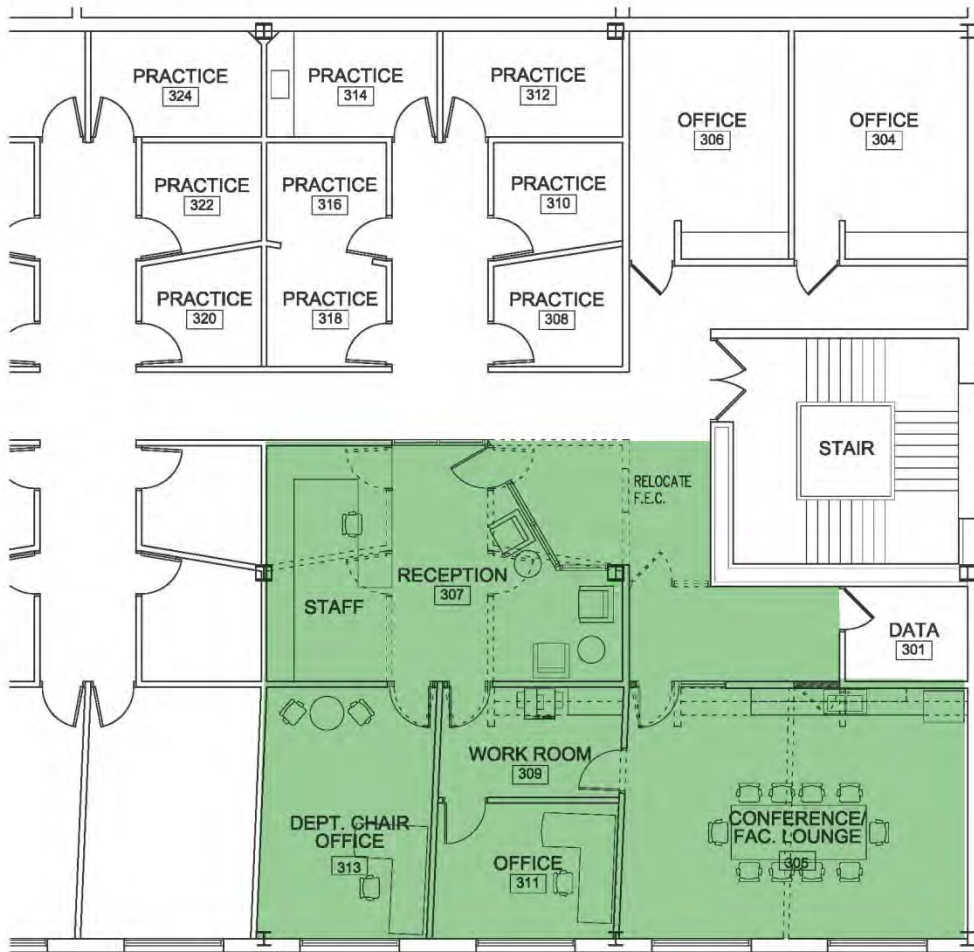


BANGSBERG HALL - 1ST FLOOR

- shared spaces
- English Department




BANGSBERG HALL - 2ND FLOOR

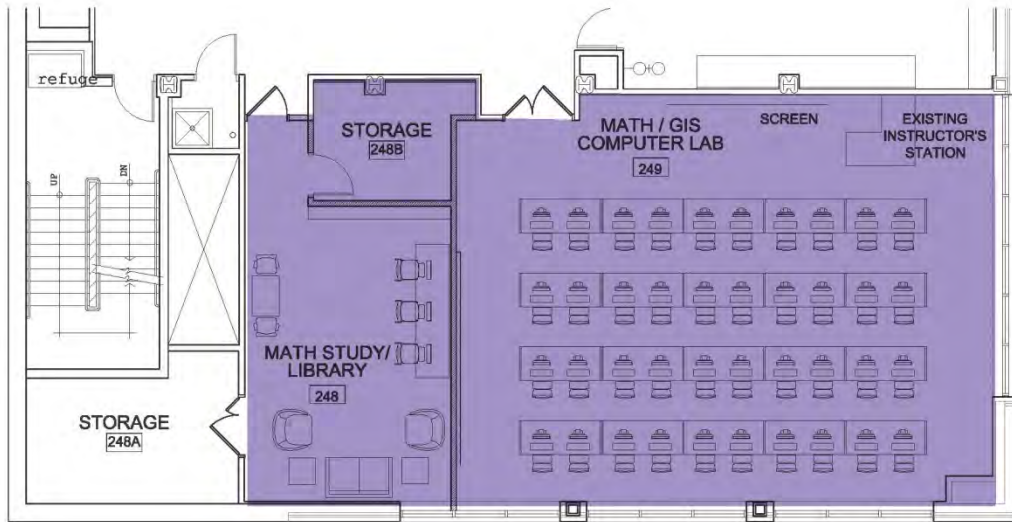
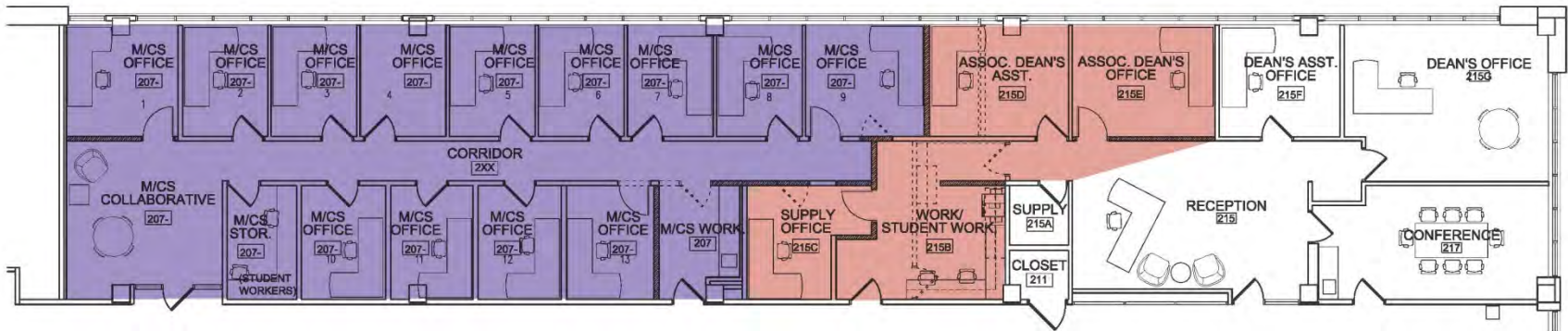


 Music Department

 NEW WALLS

 DEMO WALLS

BANGSBERG HALL - 3RD FLOOR



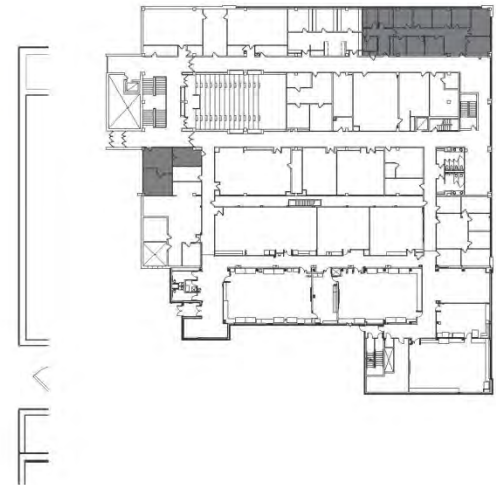
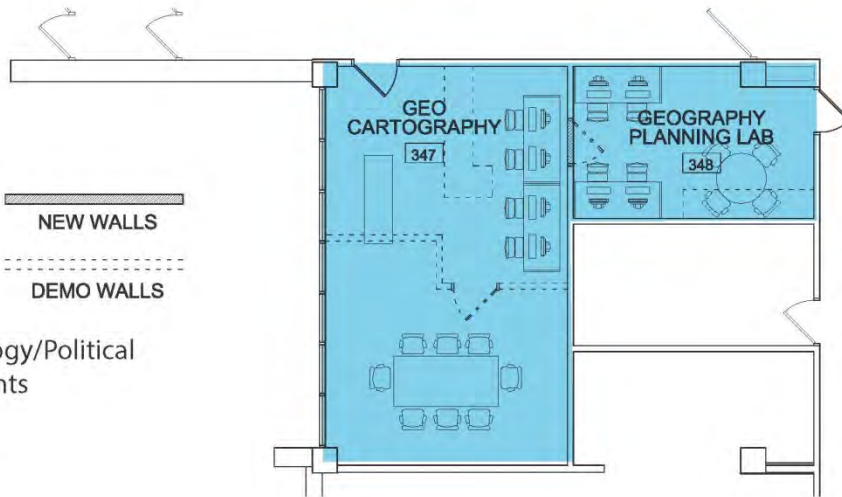
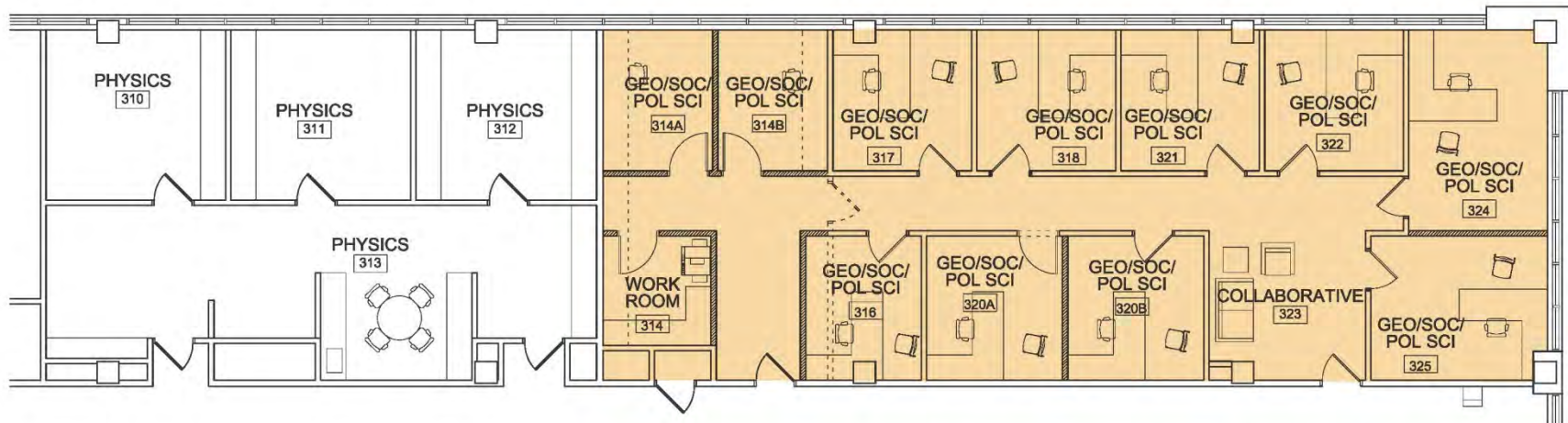
NEW WALLS

DEMO WALLS

Math/Computer Science Departments

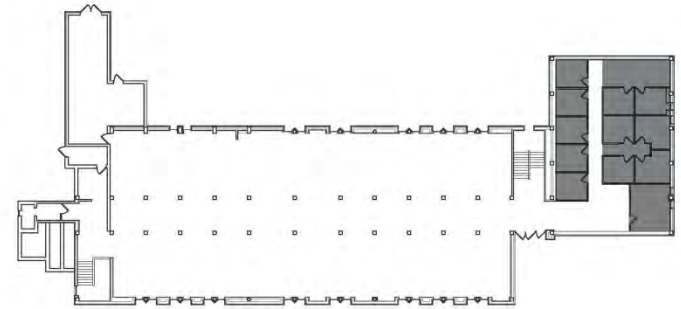
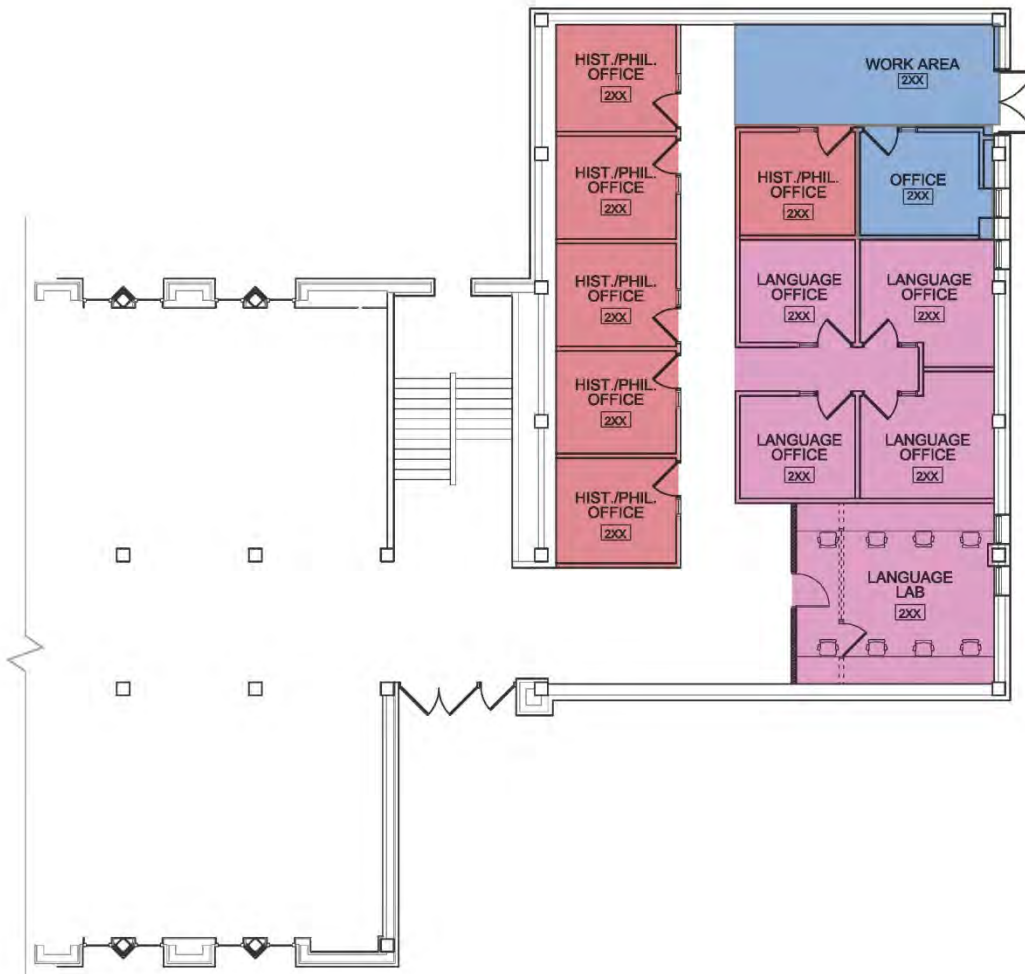
Dean's Suite

SATTGAST HALL - 2ND FLOOR



- Geography/Sociology/Political Science Departments
- Geography Labs

SATTGAST HALL - 3RD FLOOR

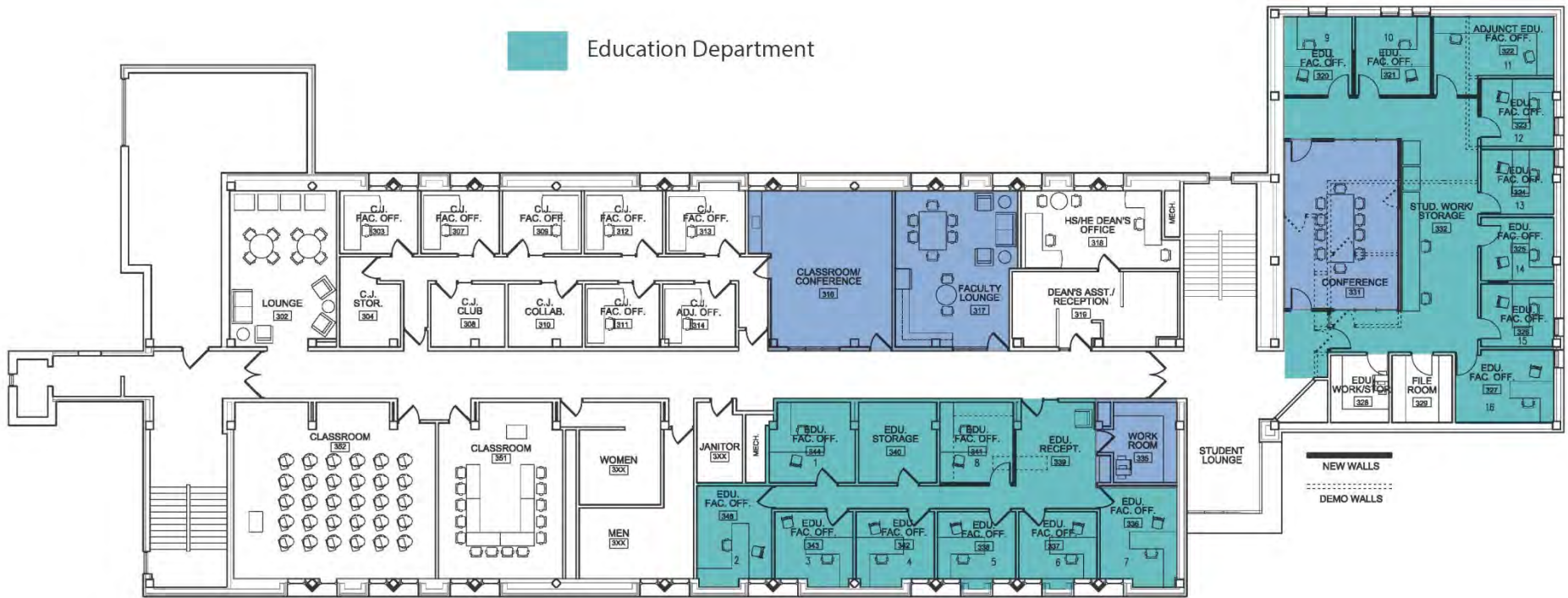


- shared spaces
- Language Department
- History/Philosophy Department

BENSEN HALL - 2ND FLOOR

shared spaces

Education Department

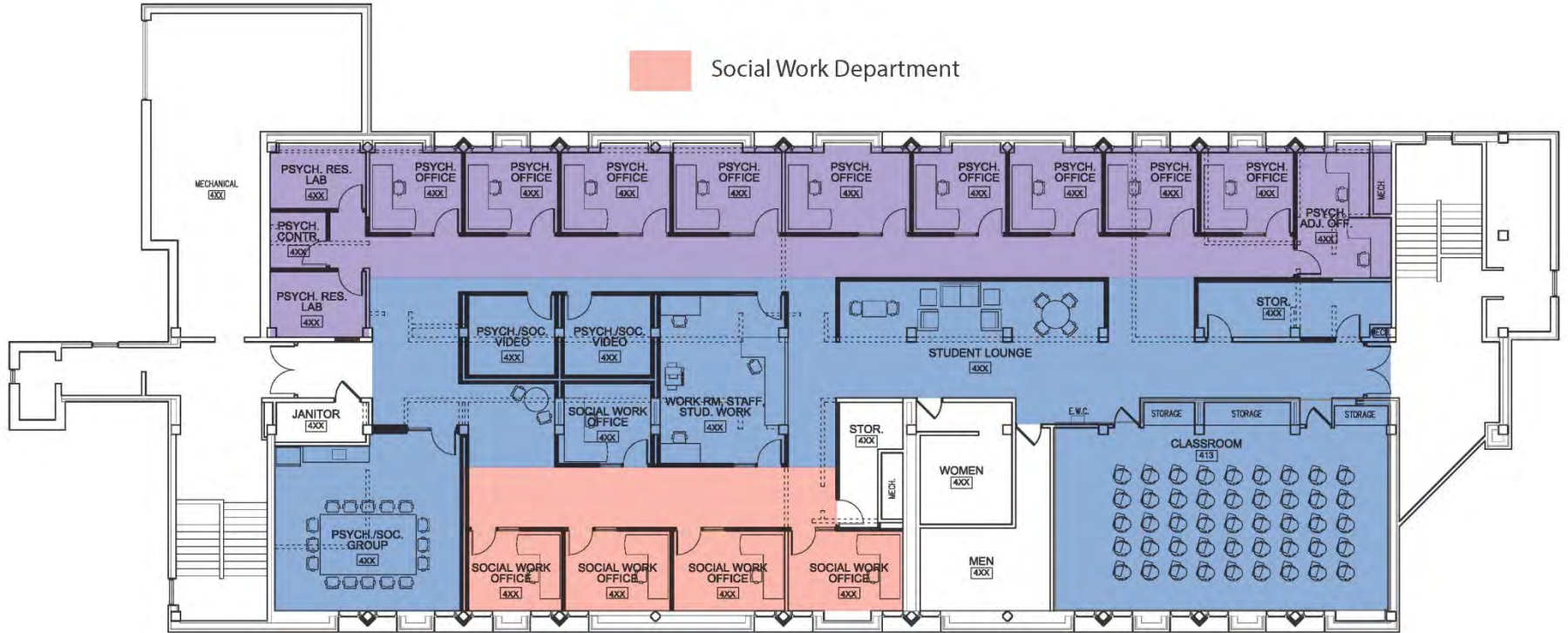


BENSEN HALL - 3RD FLOOR

shared spaces



Psychology Department

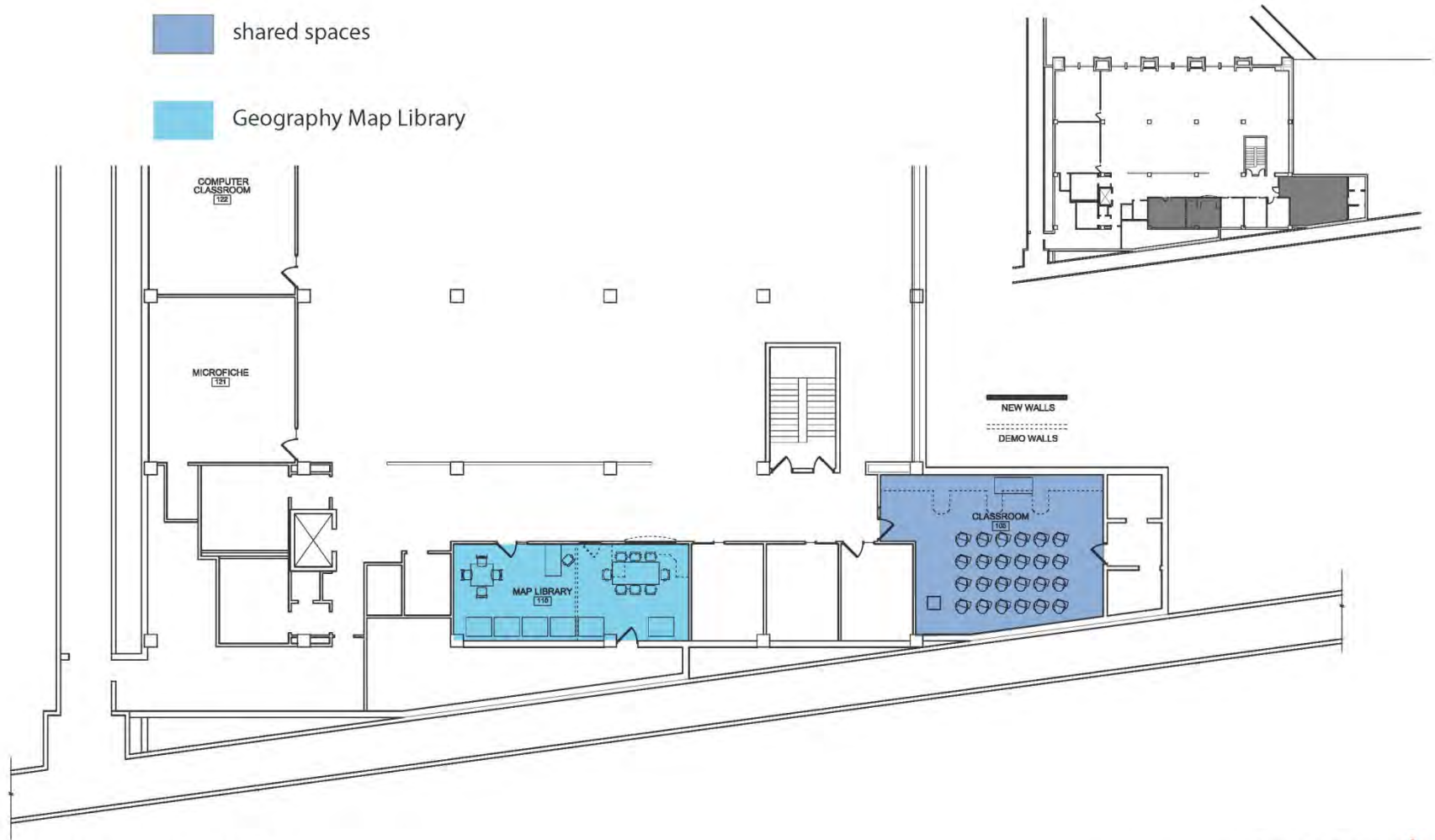
Social Work Department



BENSEN HALL - 4TH FLOOR



-  shared spaces
-  Geography Map Library



CLARK LIBRARY - 1ST FLOOR



CLARK LIBRARY - 2ND FLOOR



CLARK LIBRARY - 3RD FLOOR



