

PREDESIGN

Open Forum

September 26, 2014

NEXT STEPS

▪ Information Gathering

- Conduct stakeholder meetings to determine office & instructional program needs:
 - September 17, 2014
 - September 24, 2014
 - October 1, 2014
 - October 13 or 15, 2014
- Conduct ongoing steering committee meeting to consider options & determine optimal concept
- Deadline for feedback before final submittal is October 15, 2014. Written feedback can be sent to Dr. Patrick Guilfoile, Bill Maki, and Bruce Cornwall (Bruce.Cornwall@lhbcorp.com)

▪ Prepare Documentation/Submit for Review & Approval by MnSCU

- Initial submittal: Early August (*Completed*)
- Draft submittal: Mid-September (*September 26th*)
- Final Submittal: October 17th

Observations

1. BSU has more academic space per FYE than all system universities except SMSU
2. BSU has roughly 40% more space per 5-year FYE than other MnSCU institutions
3. BSU space use is lower than all universities, except SMSU
4. Based on FYE only, one could argue BSU should be 250,000 – 270,000 sq ft smaller if aligned with university or system averages
5. Cost of 'excess' space is \$207,500 - \$226,500 for energy alone

Recommendations

1. Follow through on demolition of Hagg-Sauer Hall to eliminate operationally and fiscally poor space
2. Accommodate displaced capacity/functions from Hagg-Sauer Hall within existing BSU campus space
3. Only, if absolutely necessary, consider a modest replacement of unique, unreplicable academic space

TIMELINE OF PROJECT REQUESTS AND APPROVALS

Scope and funding evolution

- Fall 2011 - Demolish existing 82,000 SF Hagg-Sauer and the construct 78,100 SF classroom and learning center with faculty offices and program suites. 2014 funding - \$1.9M and 2016 funding - \$29.2M
- Spring 2013 - Demolish existing Hagg-Sauer only. 2014 funding – \$1.0M and 2016 funding - \$0
- Summer 2013 - Demolish existing Hagg-Sauer only with funding for renovations. 2014 funding – \$1.0M and 2016 funding - \$5.0M
- Fall 2013 - Demolish existing Hagg-Sauer with funding for smaller classroom facility. 2014 funding – \$1.0M and 2016 funding - \$10.0M
- Fall 2014 - Demolish existing Hagg-Sauer with funding for smaller classroom facility and renovations. 2014 funding – \$1.0M and 2016 funding - ~\$14.0M to \$15.0M

APPROPRIATIONS | Preliminary

	2014	Suggested 2016	Preliminary 2016 (LO)	Preliminary 2016 (HI)
Design Fees	\$750,000		\$375,000	\$425,000
Project Management	\$250,000	\$240,000	\$225,000	\$250,000
Construction		\$8,500,000		
Building		* ** \$7,000,000	\$10,730,000	\$12,690,000
Site		\$500,000	\$450,000	\$500,000
Demolition		\$250,000	\$450,000	\$500,000
Contingency		\$750,000	\$800,000	\$900,000
Construction Management		\$480,000	\$700,000	\$800,000
Art		\$80,000	\$100,000	\$100,000
Occupancy		\$700,000	\$625,000	\$700,000
Total	\$1,000,000	\$10,000,000	\$14,455,000	\$16,865,000

* Budget costs for new university classroom facilities
 ≈ **approximately** \$275-300/SF

** Budget costs for renovated university classroom
 facilities ≈ **approximately** \$100-125/SF

2016 PREDESIGN | Option H Location

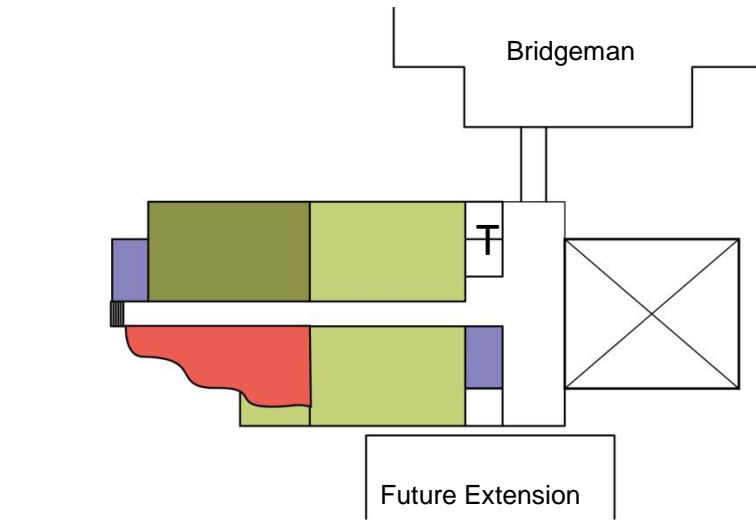


Location H

PROGRAM: CLASSROOM | Preliminary

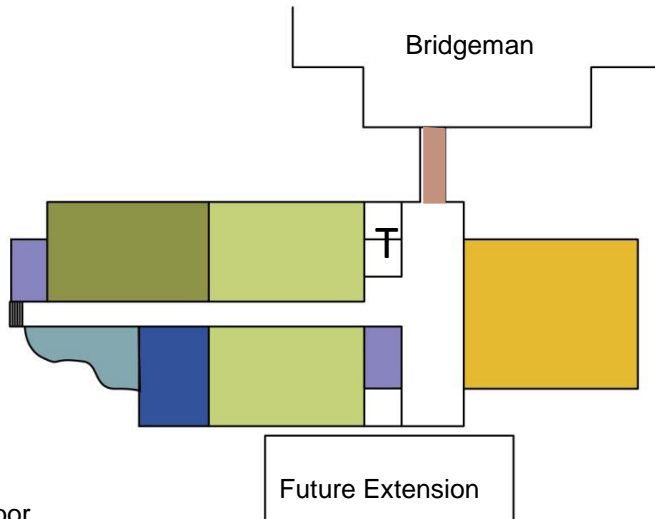
Space	#	SF	Total Size	# of Occ.
1. Computer Lab	1	800	800	30
2. Classroom	4	2,500	10,000	125
3. Lecture Hall	1	4,000	4,000	250
4. Active Learning	2	1,200	2,400	54
			17,200	
5. Circulation/Mechanical	(SFx1.4)		6,880	
Total	8		24,080	

CLASSROOM BUILDING DIAGRAM | Preliminary



Second Floor

- Classrooms
- Active Learning Classrooms
- Faculty Workshop/Admin. Support
- Study Lounge
- Support
- Vertical Circulation
- Auditorium
- Skyway
- Computer Lab



First Floor

PROGRAM NEEDS

Programs:

Space	GEOGRAPHY	ENGLISH	HISTORY	POLITICAL SCIENCE	PSYCHOLOGY	PHILOSOPHY	SOCIAL WORK	SOCIOLOGY	MATH	COMPUTER SCIENCE	LANGUAGE	MUSIC	MASS COMM.
1. Offices	4	19	3	2	10	2	5	3	9	3	3	14	5
2. Workrooms	1 ^a	1	1 ^a	1 ^a		1 ^a	1	1 ^a	1 ^a	1 ^a	1 ^a		1
3. Conference	1 ^a	1	1 ^a	1 ^a		1 ^a	1	1 ^a	1 ^a	1 ^a	1 ^a		4
4. Storage	1	1	1	1		1	1	1	1	1	1 ^a		4
5. Hoteling	1 ^b	1 ^d	1 ^c	1 ^c	1 ^f	1 ^c	1 ^d	1 ^b	1 ^a	1 ^b	1 ^c		4
6. Program Center	1	1	1 ^a	1	1	1 ^a	1	1	1	1	1		1
7. Math Library									1				
8. Map Library	1 ^e												
9. Cartography	1												
10. Physical Geography	1												
11. Practicum Suite					1		1						
12. Reception													
13. Planning Lab	1												
14. Language Lab											1		
15. GIS Lab	1												
16. Math Lab									1				
17. Comp. Sci. Lab										1			
18. SS Lab				1	1		1						

- a. Shared
- b. 2 Stations
- c. 1 Station
- d. 3 Stations
- e. Clark Library
- f. 4 Stations

PROGRAM: LEARNING COMMUNITIES | Preliminary

Program : Learning Communities (Preliminary)

Space	STEM		SS		HUM		HUM SERV		LRN COMM	MUSIC	MASS COMM
1. Offices	(12)	110	(9)	110	(27)	110	(15)	110			
2. Workrooms	(1)	150	(1)	300	(2)	300	(2)	150			
3. Conference	(1)	200	(1)	400	(3)	600	(2)	200			
4. Storage	(1)	110	(2)	220	(3)	330	(2)	110			
5. Hoteling	(1)	220	(1)	220	(1)	220	(2)	110			
6. Learning Co-op	(1)	250	(1)	500	(1)	1,000	(2)	500			
7. Math Library	(1)	200									
8. Planning Lab			(1)	200							
9. Cartography			(1)	400							
10. Physical Geography			(1)	400							
11. Practicum Suite							(1)	1,000			
12. Learning Commons									25,500		
13. Map Library									775		
14. Circulation/Reception (x1.4)		980		1,312		2,168		1,716			
Total		3,430 SF		4,592 SF		7,588 SF		6,006 SF	26,275 SF	6,550 SF	9,341 SF

1. STEM, SS, HUM, HUM SERV; MUSIC = 28,166 GSF

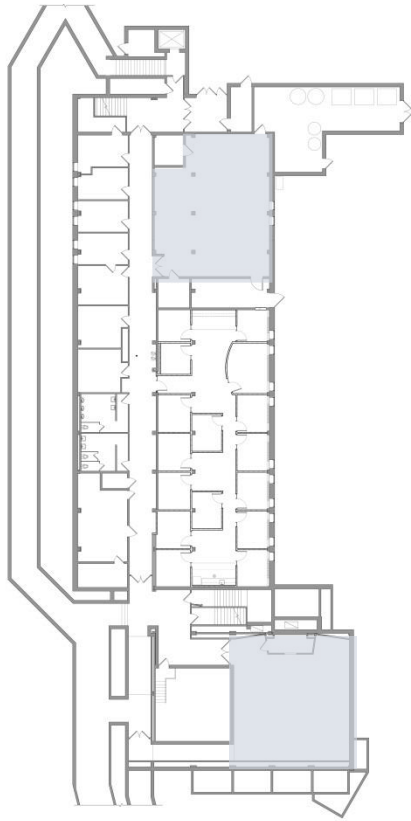
2. LEARNING COMMONS = 26,275 GSF

3. MASS COMM = 9,341 GSF

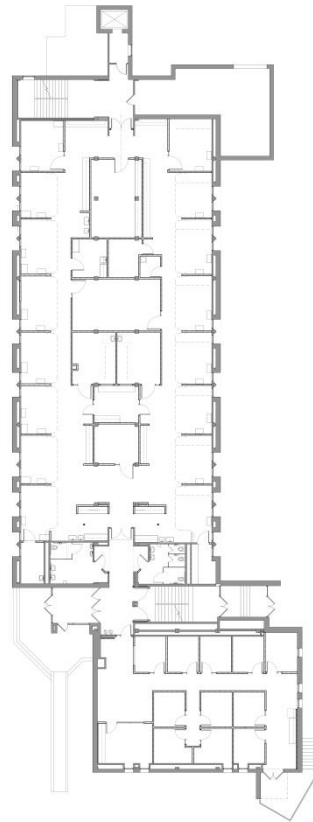
PROGRAM LOCATION MATRIX | Preliminary

	Current	Proposed	Other?
Geography	Hagg-Sauer	?	Bridgeman/Library
English	Hagg-Sauer	Bangsberg	
History	Hagg-Sauer	Bangsberg	
Political Science	Hagg-Sauer	?	Bridgeman/Library
Psychology	Hagg-Sauer	Bensen	
Philosophy	Hagg-Sauer	Bangsberg	
Social Work	Hagg-Sauer	Bensen	
Sociology	Hagg-Sauer	?	Bridgeman/Library
Math	Hagg-Sauer	Sattgast	
Computer Science	Hagg-Sauer	Sattgast	
Language	Hagg-Sauer	Bangsberg	

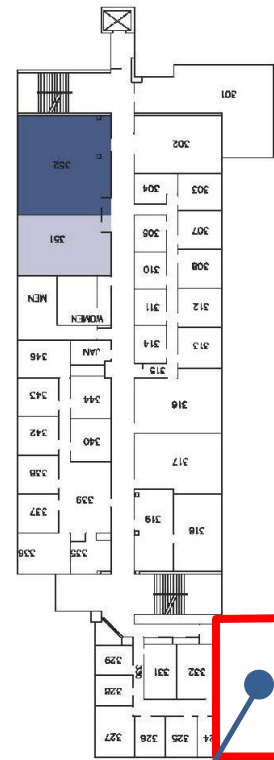
PROGRAM: LEARNING COMMONS | Bensen Hall | Preliminary



First Floor



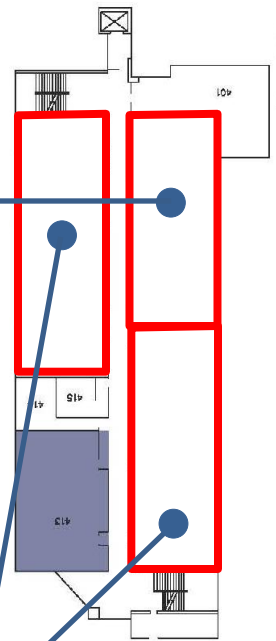
Second Floor



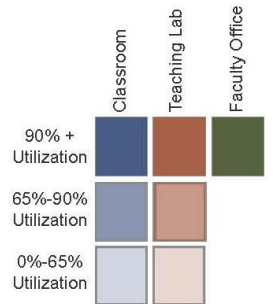
Third Floor

Computer Lab
1000 SF

Social Work
1650 SF
Psychology
3270 SF



Fourth Floor



Note: percent based on a 32 hour week

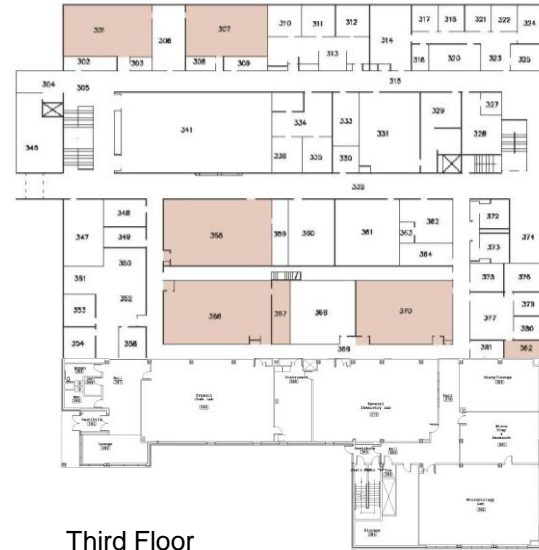
PROGRAM: LEARNING COMMONS | Sattgast | Preliminary



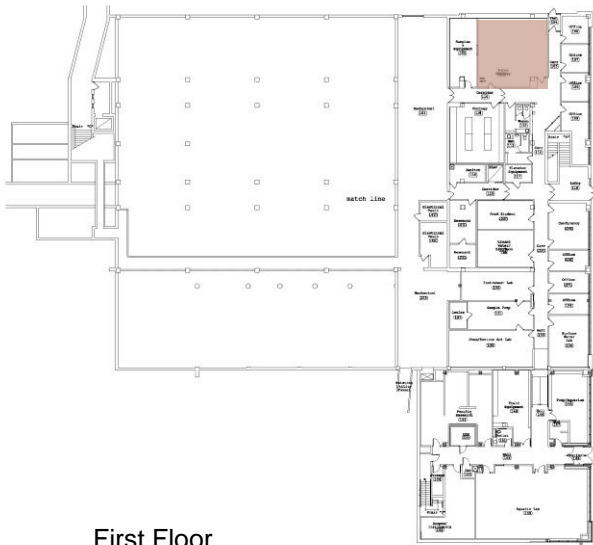
Second Floor

**STEM LC:
Mathematics &
Computer Science
2950 SF**

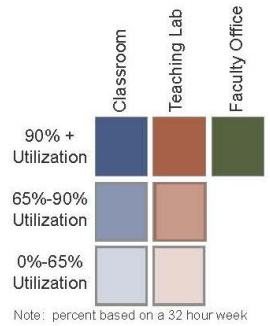
**Active Learning Lab
1850 SF**



Third Floor

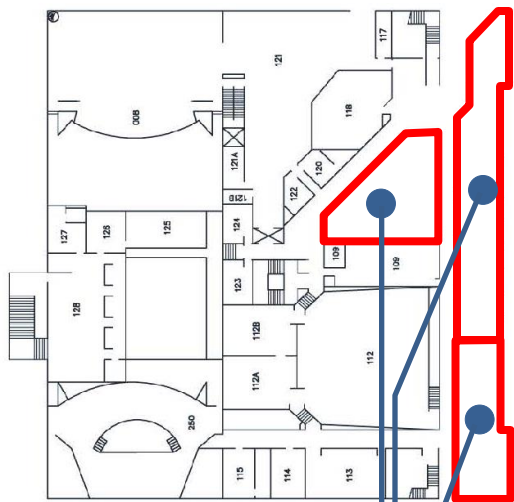


First Floor

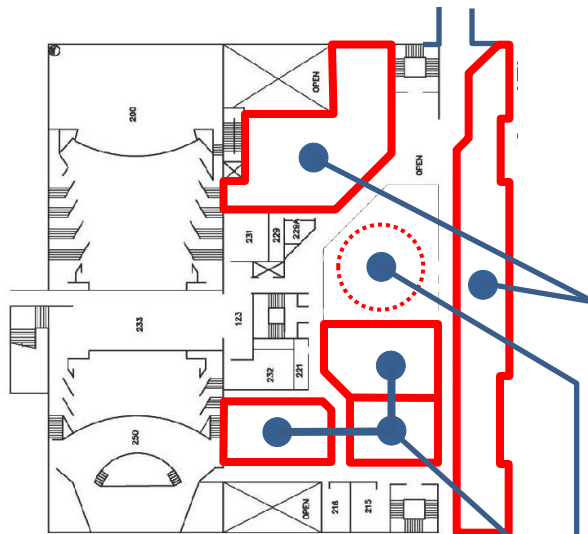


Note: percent based on a 32 hour week

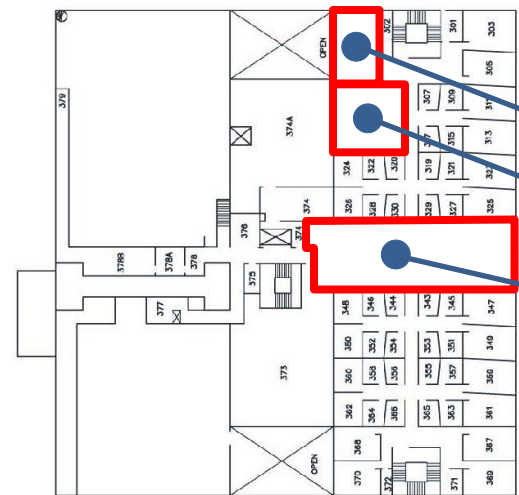
PROGRAM: LEARNING COMMONS | Bangsberg | Preliminary



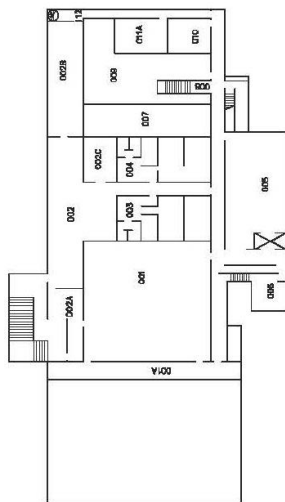
First Floor



Second Floor



Third Floor



Basement Floor

Music Listening/Ensemble
 1300 SF
History/Philosophy Offices
 2250 SF
Music Education Classroom
 1500 SF

Classrooms
 3800 SF
Humanities Commons
 2050 SF
Humanities Offices
 2800 SF, 3800 SF

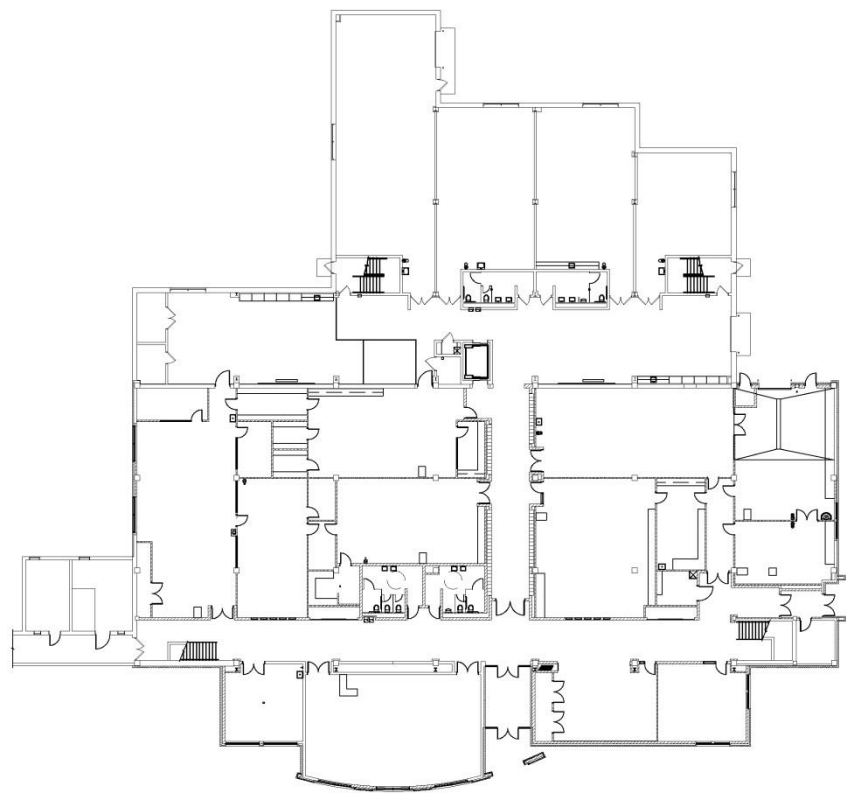
Music Dept. Off./Lounge
 2350 SF
Electronic Keyboard Lab
 800 SF
Large Practice Rooms
 600 SF

PROGRAM: LEARNING COMMONS | Bridgeman Hall | Preliminary

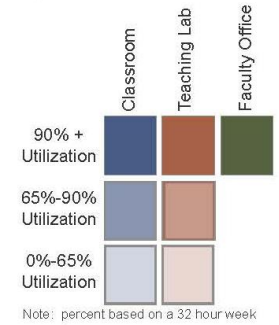


← **SOCIAL SCIENCES?**
 Geography
 Sociology
 Political Science

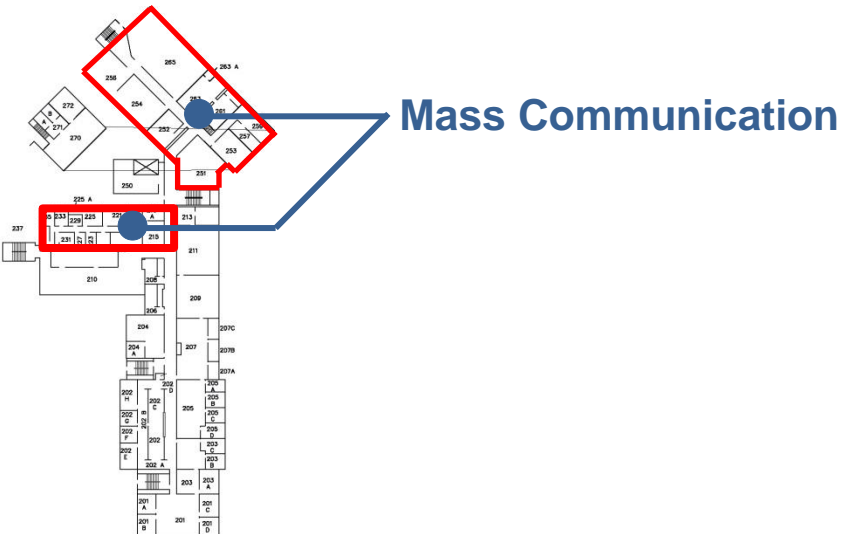
Second Floor



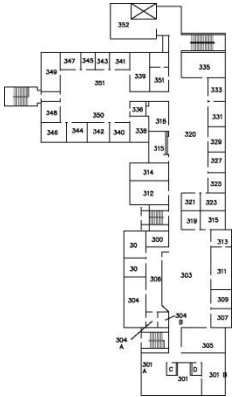
First Floor



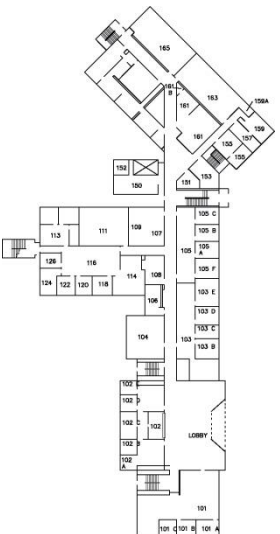
PROGRAM: LEARNING COMMONS | Deputy Hall | Preliminary



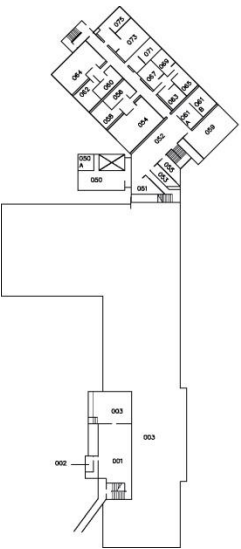
Second Floor



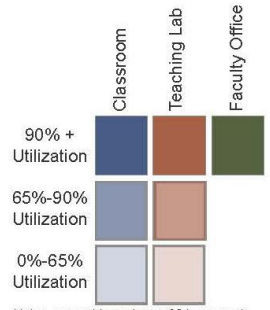
Fourth Floor



First Floor

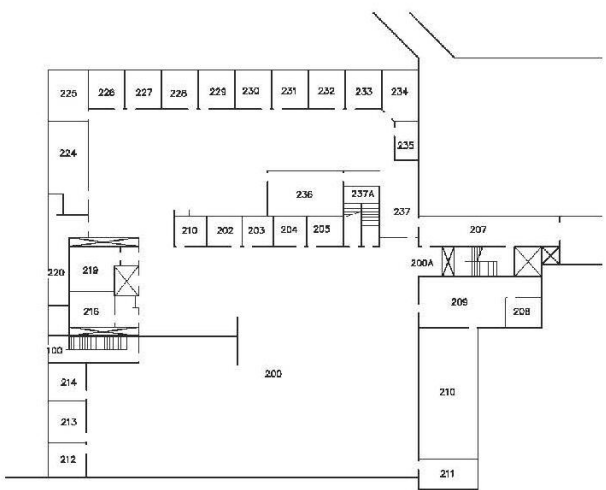


Basement

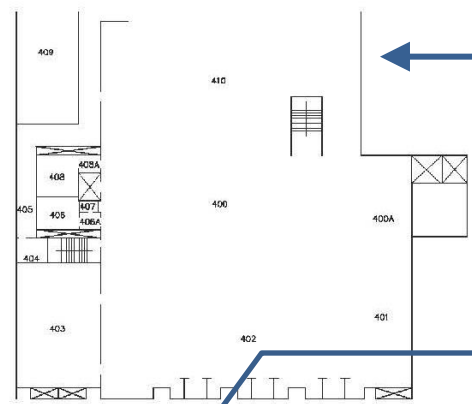


Note: percent based on a 32 hour week

PROGRAM: LEARNING COMMONS | A.C. Clark Library | Preliminary



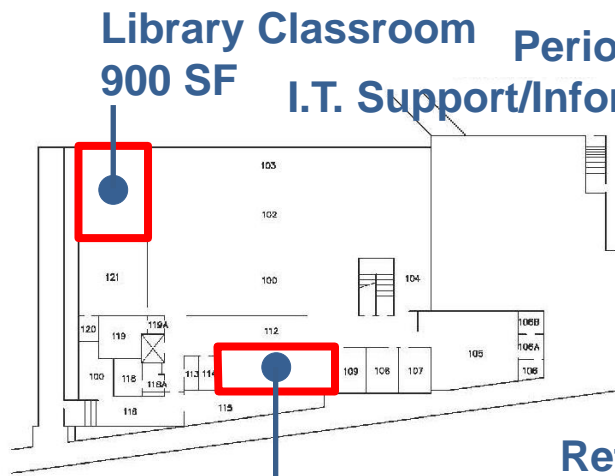
Second Floor



Fourth Floor

← **SOCIAL SCIENCES?**
 Geography
 Sociology
 Political Science

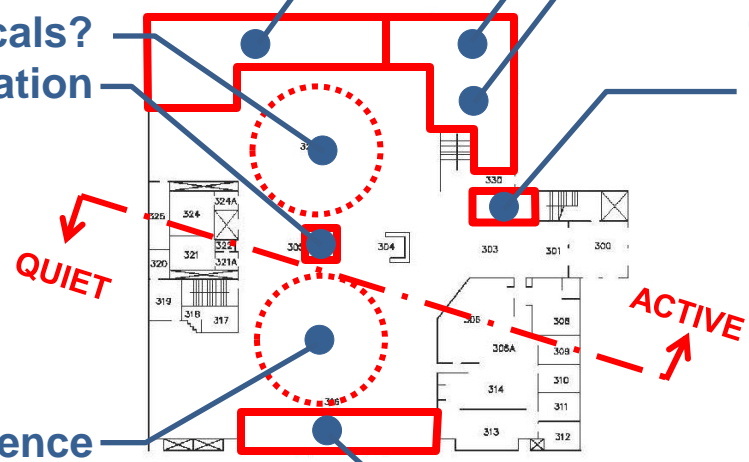
Collaborative Rooms
 Study Center
 Writing Center
 Tutoring/Assistive
 Technology
 Coffee Shop



First Floor

Library Classroom
 900 SF
Periodicals?
I.T. Support/Information

Map Library
 775 SF



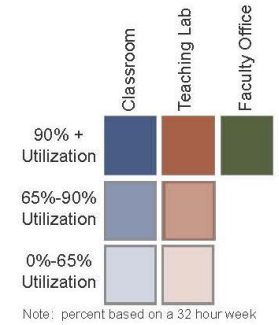
Third Floor
 25,500 SF

Reference

Librarians

QUIET

ACTIVE



Note: percent based on a 32 hour week

NEXT STEPS

▪ Information Gathering

- Conduct stakeholder meetings to determine office & instructional program needs:
 - September 17, 2014
 - September 24, 2014
 - October 1, 2014
 - October 13 or 15, 2014
- Conduct ongoing steering committee meeting to consider options & determine optimal concept
- Deadline for feedback before final submittal is October 15, 2014. Written feedback can be sent to Dr. Patrick Guilfoile, Bill Maki, and Bruce Cornwall (Bruce.Cornwall@lhbcorp.com)

▪ Prepare Documentation/Submit for Review & Approval by MnSCU

- Initial submittal: Early August (*Completed*)
- Draft submittal: Mid-September (*September 26th*)
- Final Submittal: October 17th



THANK YOU!