

2006 - 2008

AFFIRMATIVE ACTION PLAN

FOR

BEMIDJI STATE UNIVERSITY

July 1, 2006

Bemidji State University  
Bemidji, MN 56601-2699

BEMIDJI STATE UNIVERSITY  
July 1, 2006

Table of Contents

|   | Page |
|---|------|
| 1. TRANSMITTAL FORM.....  | 3    |
| 2. STATEMENT OF COMMITMENT.....<br>President, July 2006   | 7    |
| 3. RESPONSIBILITY FOR IMPLEMENTATION.....   |      |
| President.....  | 8    |
| Equal Opportunity Officer.....  | 8    |
| Affirmative Action Officer.....   | 8    |
| Administrators/Supervisors.....   | 9    |
| Director of Human Resources.....  | 10   |
| Affirmative Action Committee.....   | 10   |
| 4. DISSEMINATION OF POLICY.....   | 12   |
| 5. COMPLAINT PROCEDURE.....<br>(For Processing Complaints of Alleged Harassment and Discrimination) | 13   |
| 6. GOALS AND TIMETABLES.....  |      |
| Utilization Analysis and the University.....  | 24   |
| Workforce Analysis - Table 1.....   | 25   |
| 2006-2008 Goals and Timetables - Table 2.....   | 26   |
| 7. PROGRAM OBJECTIVES - 2006-2008.....  | 27   |
| 8. METHODS OF AUDITING .....  | 30   |
| 9. WEATHER EMERGENCIES AND EVACUATIONS.....   | 40   |
| 10. REASONABLE ACCOMMODATION.....   | 42   |
| 11. RECRUITMENT PLAN.....   | 46   |
| 12. RETENTION PLAN.....   | 54   |

APPENDICES:

|  |    |
|--|----|
| a. Organizational Charts.....  | 55 |
| President (Chart 1, Chart 2)   |    |
| Executive Director of University Advancement                                 |    |
| Provost and Vice President for Academic & Student Affairs (Chart 1, Chart 2) |    |
| Vice President for Finance & Administration                                  |    |
| b. Nondiscrimination in Employment and Education Opportunity Policy.....     | 61 |
| c. Policy on Filling Unclassified Positions.....                             | 67 |

# Bemidji State University

## SUPPLEMENT PERSONNEL DATA FORM

Bemidji State University is an Equal Opportunity Employer/Educator committed to the policies and principles of affirmative action in its recruitment procedures. To advance the implementation of these policies and to assist the University in responding to valid inquiries by federal and state agencies relative to equal opportunity and our affirmative action efforts, it is necessary that we measure and monitor our advertising and recruitment success by compiling the information below. Data reported on this form will be available only to authorized personnel for affirmative action purposes or reporting requirements of federal or state agencies. Completion of this form is VOLUNTARY. *Failure to comply or submit the data requested will in no way disqualify you for present or future employment.*

NAME: \_\_\_\_\_

POSITION DESIRED: \_\_\_\_\_ DEPARTMENT: \_\_\_\_\_

1. **PREDOMINANT ETHNIC BACKGROUND:** (self identification)

- White, not of Hispanic origin. Persons having origins in any part of the original people of Europe, North Africa, or the Middle East
- Black or African American, not of Hispanic origin. Persons having origins in any of the Black racial groups of Africa.
- Hispanic or Latino. Persons of Mexican, Puerto Rican, Cuban, Central or South American origins or other Spanish culture or origin, regardless of race.
- American Indian or Alaskan Native. Persons having origins in any of the original peoples of North America, and who maintain cultural identification through tribal affiliation or community recognition.
- Asian. Persons having origins in any of the original peoples of the Far East, Southeast Asia, the Indian Subcontinent. This includes, for example, China, Japan, Korea. The Indian Subcontinent includes the countries of India, Pakistan, Bangladesh, Sri Lanka, Nepal and Bhutan.
- Native Hawaiian or other Pacific Islander. This includes the Pacific Islands, Philippine Islands and Samoa.
- Two or more races.

**GENDER:**       Female       Male

**DISABILITY:**     Yes       No

Under the Americans with Disabilities Act of 1990, an individual with a disability is a person who has: (1) a physical or mental impairment that substantially limits one or more major life activities; (2) a record of such impairment; or (3) is regarded as having such an impairment.

**AGE GROUP 40-65** (The legally protected age group is 40-65)       Yes       No

**How did you learn about this position?**

- Newspaper or other publication. Please specify \_\_\_\_\_
- Community or Professional Organization. Please specify \_\_\_\_\_
- Internet. Please specify list or source \_\_\_\_\_
- Word of Mouth
- University Employee
- Other. Please specify \_\_\_\_\_

Please mail this form directly to: Linda Gilsrud, Affirmative Action Officer  
Bemidji State University  
1500 Birchmont Drive N.E.  
Bemidji, MN 56601-2699



---

## STATEMENT OF COMMITMENT

---

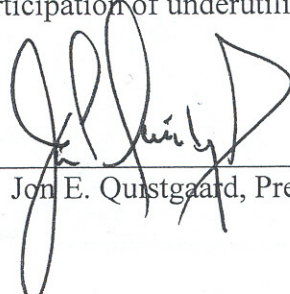
**Bemidji State University** is committed to conducting all personnel and educational activities without regard to race, sex, color, creed, religion, age, national origin, marital status, disability, status with regard to public assistance, sexual orientation, or membership or activity in a local commission as defined by law. Personnel activities include, but are not limited to: recruitment, selection, placement, employee development, promotion, retention, compensation, leaves of absence, disciplinary action, transfer, demotion, termination, and layoffs affecting all employees and job applicants. Bemidji State University will not condone discrimination on the basis of these protected class categories in accordance with all state and federal equal opportunity/affirmative action laws, directives, orders and regulations.

**Bemidji State University** is committed to implementation of this affirmative action plan and fully supports the university's affirmative action efforts. Bemidji State University will implement and maintain an affirmative action program that takes aggressive measures to eliminate internal barriers to equal opportunity and will strive to remedy the historical underrepresentation in the employment, retention and promotion of qualified persons with disabilities, racial minorities/persons of color, and women.

It is Bemidji State University's policy to actively pursue equal employment practices throughout all phases of the employment process. In this spirit, Bemidji State University will continue to seek opportunities to maximize the selection and retention of protected group employees by:

- continuing to actively and aggressively recruit protected group applicants;
- continuing affirmative action training for employees, with an emphasis on those serving on search committees; and,
- supporting affirmative measures to retain protected group employees.

I believe that only through aggressive recruitment, selection, and retention of protected group persons can we comply with this commitment to affirmative action and demonstrate to our university community our concern for basic fairness, the desire to overcome prejudice, and the necessity of making special efforts to ensure the greater participation of underutilized group members in all facets of the University's community.



---

Jon E. Quistgaard, President

---

July 1, 2006

---

---

## **RESPONSIBILITY FOR IMPLEMENTATION**

---

---

### **President**

As the primary administrator of Bemidji State University, the President is responsible for overseeing Bemidji State University's equal opportunity and affirmative action policies, procedures and programs as well as assuring compliance with all related state and federal laws, rules and regulations. Final disposition of all such issues resides with the President.

#### **1. Responsibilities**

- A. Development and implementation of all equal opportunity and affirmative action programs.
- B. Fulfilling the precepts of equal employment opportunity and affirmative action.
- C. Act as final review officer or designate an alternate for formal discrimination and harassment complaints.
- D. Commitment of adequate staff and resources to carry out the affirmative action plan
- E. Incorporate into all administrators' and managers' work plans a clear definition of equal opportunity and affirmative action in employment and education.

#### **2. Accountability**

The President, Dr. Jon E. Quistgaard, 218/755-2011, is directly accountable to the Chancellor on all matters relating to equal opportunity and affirmative action at Bemidji State University.

### **Equal Opportunity Officer**

The Provost and Vice President for Academic and Student Affairs has been designated by the President as the Equal Opportunity Officer for Bemidji State University.

#### **1. Responsibilities**

- A. Direct a comprehensive program of equal opportunity/affirmative action for Bemidji State University in accord with federal and state laws and regulations.
- B. Oversee an Affirmative Action Committee for Bemidji State University to develop recommendations concerning affirmative action programs, policies and procedures.
- C. Act as final review officer for formal discrimination and harassment complaints.

#### **2. Accountability**

The Equal Opportunity Officer, Dr. Joann Fredrickson, 218/755-2015, is directly accountable to the President.

### **Affirmative Action Officer**

The Affirmative Action Officer is responsible for the overall implementation and administration of Bemidji State University's equal opportunity and affirmative action programs.

## **1. Responsibilities**

- A. Development, implementation, monitoring, and facilitation of Bemidji State University's biennial affirmative action plan.
- B. Monitor all hiring to assure compliance with stated affirmative action plan and MnSCU board policy through review of vacancy notices, advertising plans, inclusion of qualified protected group candidates in interview process, and review of selected candidates.
- C. Conduct/participate in affirmative action, sexual harassment, and reasonable accommodation training for supervisors, employees, and students.
- D. Monitor university publications for inclusion of equal opportunity statement.
- E. Monitor university adherence to MnSCU Board's reasonable accommodation policy.

## **2. Duties**

- A. Serve as Chairperson for the Affirmative Action Committee.
- B. Coordinate the delivery of the Sexual Harassment education program.
- C. Assist management in establishing hiring goals and monitor representative workforce.
- D. Serve as information resource and advisor to search committees and supervisors regarding affirmative action information.
- E. Serve as the university contact of receipt of discrimination complaints, and when determined, investigate discrimination complaints from students and employees.

## **3. Accountability**

The Assistant to the President/Affirmative Action Officer, Ms. Lorena C. Cook, 218/755-2900, is directly accountable to the President for the overall implementation and administration of Bemidji State University's equal opportunity and affirmative action programs.

## **Administrators/Supervisors**

Administrators/Supervisors are responsible for enforcing and implementing equal opportunity and affirmative action policies, procedures, and programs within their functional areas of responsibility.

### **1. Responsibilities**

- A. Commitment to the university's equal opportunity/affirmative action policy.
- B. Adherence to the pre-hire review process.
- C. Commitment to the establishment and maintenance of a workplace free of discrimination and sexual harassment.

### **2. Duties**

- A. Disseminate information to employees and committee members regarding affirmative action goals.
- B. Actively recruit protected group candidates through selected advertising and vacancy notice placement.
- C. Support the hiring of protected group candidates within the context of the affirmative action plan.

### **3. Accountability**

Accountability for Administrators/Supervisors is reflected in the Bemidji State University's organization chart provided in **Appendix A**.

## **Director of Human Resources**

In addition to the responsibilities and duties described above for the Administrators/Supervisors, the Director of Human Resources is also responsible as described below for classified and unclassified positions.

### **1. Responsibilities**

- A. Inform all supervisors of vacant classified positions of pre-hire review process and university's commitment to affirmative action goals.
- B. Insure that all job announcements, advertising and vacancy notices carry equal opportunity employer statement.
- C. Conduct/participate in affirmative action and sexual harassment training for supervisors and employees.
- D. Disseminate information to all supervisors and employees regarding affirmative action, sexual harassment and complaint procedures.

### **2. Duties**

- A. Human Resources Director serves as chairperson of the Affirmative Action Committee in the absence of the Affirmative Action Officer.
- B. Assist supervisors and managers in the recruitment and hiring of qualified protected group individuals.
- C. Human Resources Director serves as a university contact for receipt of discrimination complaints.
- D. Conduct disciplinary investigations and take appropriate action upon receipt of harassment complaints against employees.

### **3. Accountability**

The Director of Human Resources, 218/755-3966, is accountable to Mr. William D. Maki, Vice President for Finance and Administration. **A search to fill this position was held this spring which resulted in a failed search. Discussion is underway as to what the next steps will be for filling this position.**

## **Affirmative Action Committee**

The President shall appoint representatives to Bemidji State University's Affirmative Action Committee based upon recommendations from various constituencies. The Committee, in conjunction with the Assistant to the President/Affirmative Action Officer, shall perform the following responsibilities and duties:

### **1. Responsibilities**

- A. Make suggestions/recommendations for internal policies and procedures to maintain compliance with system regulations and federal and state guidelines concerning affirmative action and sexual harassment. The suggestions/recommendations shall be made to the University Equal Opportunity Officer.

- B. Recommend recruitment/hiring procedures designed to recruit and employ qualified persons who are members of underrepresented groups.
- C. Recommend programs to develop and broaden the aspirations, qualifications, and educational opportunities of members of underrepresented groups.

**2. Duties**

- A. Review all statewide and University hiring goals proposed by Deans/Supervisors.
- B. Review University Affirmative Action/Hiring procedures.
- C. Review University progress and drafting of recommendations in meeting goals in the hiring and retention of employees
- D. Assist in maintaining an environment free from unlawful discrimination and harassment of students and employees.
- E. Assist in maintaining a learning environment that supports the needs of members of all underrepresented groups.

**3. Accountability**

Committee members are accountable to the President for their Committee work.

---

---

## **DISSEMINATION OF POLICY**

---

---

The following measures will be used to inform Bemidji State University's educational community and the public of our commitment to Affirmative Action and Equal Opportunity in all employment and educational policies, procedures, programs, services, and opportunities.

### **INTERNAL DISSEMINATION**

1. Copies of the Affirmative Action Plan will be made available at the Affirmative Action Office, the Human Resources Office and the offices of the President, each Vice President, and Dean. In addition, a copy of the plan will be distributed to the leadership of each bargaining unit. A copy of the plan will also be available at the campus Library.
2. Training will be provided to managers and supervisors on affirmative action and equal opportunity issues.
3. All recruitment brochures, job announcements and vacancy notices shall identify Bemidji State University as an Equal Opportunity Employer and Educator.
4. Copies of the Affirmative Action Plan will be made available to all employees and students upon request.
5. A copy of the MnSCU Board's Nondiscrimination in Employment and Education Opportunity Policy shall be made available to all employees through their Employee Handbook and/or their Faculty Handbook.

### **EXTERNAL DISSEMINATION**

6. All job announcements, vacancy notices, website home page, letterhead and other education or employment related materials shall identify Bemidji State University as An Equal Opportunity Employer and Educator.
7. The University will aggressively publicize via a variety of protected group and non-protected group media sources its commitment to the recruitment, employment, promotion, and retention of individuals with disabilities, women and minorities.
8. Copies of the Affirmative Action Plan will be made available to all interested parties.
9. Information on Bemidji State University's Affirmative Action Program and Plan shall be made available to all external constituents.



**BEMIDJI**  
STATE UNIVERSITY

**Bemidji, Minnesota 56601**

## **MINNESOTA STATE COLLEGES AND UNIVERSITIES**

### **System Procedure - Chapter 1 - System Organization and Administration Section B - Equal Education and Employment Opportunity**

#### **Procedure 1B.1.1 Report/Complaint of Discrimination/Harassment Investigation and Resolution**

---

##### **Part 1. Procedure objective.**

This procedure is designed to further implement Minnesota State Colleges and Universities policies relating to non-discrimination by providing a process through which individuals alleging violation of system non-discrimination policies may pursue a complaint. This includes allegations of discrimination or harassment based on sex, race, age, disability, color, creed, national origin, religion, sexual orientation, marital status, status with regard to public assistance or membership or activity in a local commission. This procedure is not applicable to allegations of sexual violence which should be handled under appropriate system and college or university policies and procedures.

A single act of discrimination may be based on more than one protected class status. For example, discrimination based on anti-Semitism may relate to religion, national origin, or both; discrimination against a pregnant woman might be based on sex, marital status, or both.

This procedure shall apply to all individuals affiliated with Minnesota State Colleges and Universities, including its students, employees, and applicants for employment, and is intended to protect the rights and privacy of both the complainant and respondent and other involved individuals, as well as to prevent retaliation/reprisal. Individuals who violate this procedure shall be subject to disciplinary or other corrective action.

Not every act that may be offensive to an individual or group constitutes discrimination or harassment. In determining whether discrimination or harassment has occurred, the totality of the circumstances surrounding the incident must be



carefully reviewed and due consideration must be given to the protection of individual rights, freedom of speech, academic freedom and advocacy.

The system office, colleges, and universities shall maintain and encourage full freedom, within the law, of expression, inquiry, teaching, and research. Academic freedom comes with a responsibility that all members of our education community benefit from it without intimidation, exploitation, or coercion. Discrimination and harassment are not within the protections of academic freedom.

## **Part 2. Definitions.**

**Subpart A. Designated officer.** A designated officer is an individual designated by the president or chancellor to be primarily responsible for investigating or coordinating the investigation of reports and complaints of discrimination/ harassment in accordance with this procedure. Designated officers may include individuals in the affirmative action or equity office, the campus security office, the student affairs or student life office, academic or administrative offices of the system office, college, or university. The president or chancellor may designate other individuals to assume the role of the designated officer as deemed necessary.

Designated officers must attend investigator training conducted by the Office of the Chancellor.

**Subpart B. Decision-making authority.** A decision-maker is an individual designated by the president or chancellor to review investigative reports, to make findings whether the discrimination/harassment policies have been violated based upon the investigation and other measures deemed necessary to reach a decision, and to determine the appropriate action for the institution to take based upon the findings. The decision-maker shall be a top level administrator such as a college or university vice president, dean or provost. At the system office, the decision-maker shall be a top level administrator such as a chancellor, vice chancellor, associate vice chancellor or other appropriate system office personnel. The president or chancellor may designate other individuals to assume the role of the decision-maker as deemed necessary.

Designated decision-makers for complaints under this procedure, including presidents, must attend decision-maker training conducted by the Office of the Chancellor.

## **Part 3. Reporting incidents of discrimination/harassment.**

**Subpart A. Reporting an incident.** The system office, colleges, and universities encourage any individual, including any student, employee, applicant for employment, or person eligible for employment (as defined by



Minnesota Statutes section 43A.02), who feels she or he has been or is being subjected to discrimination/harassment to report the incident to the designated officer. Any student, faculty member or employee who knows of, receives information about or receives a complaint of discrimination/harassment is urged to report the information or complaint to the designated officer of the system office, college, or university.

**Subpart B. Personal resolution.** In instances where an individual believes she/he personally has been subjected to behavior prohibited by the 1B.1 Non-discrimination policy, that individual may voluntarily choose to directly address the offensive behavior. In such a situation, she or he should clearly explain to the alleged offender as soon as possible after the incident that the behavior is objectionable and that it stop. Communication with the alleged offender may be in person, on the telephone, or in writing. If the behavior does not stop or if the individual believes some employment or education consequences may result from the discussion, she or he should go to the designated officer to process the complaint. Under no circumstances shall an individual be required to use personal resolution to address prohibited behaviors rather than reporting the behavior to the designated officer.

**Subpart C. Duty to report.** Unless the matter already has been referred to the designated officer, administrators and supervisors must inquire into allegations or behaviors that they reasonably believe may constitute discrimination or harassment and, when a report/complaint appears to be warranted, refer the matter to the designated officer. The duty to report shall not be construed to prevent immediate corrective action by an administrator or supervisor when appropriate.

**Subpart D. Institutional responsibility.**

1. **Colleges and universities.** This procedure applies to all members of the educational community including students. Reports/complaints against a president of a college or university shall be filed with the system office. Complaints against a president shall be processed by the college or university if the president's role in the alleged incident was limited to a decision on a recommendation made by another administrator, such as tenure, promotion or non-renewal, and the president had no other substantial involvement in the matter. Reports and complaints against college or university vice presidents, deans, or provosts are filed at the campus level with the president or the president's designee as decision-maker.
2. **System office.** For reports/complaints which involve allegations against system office employees, the responsibilities identified in this procedure as those of the president are the responsibilities of the chancellor. Reports/complaints which involve allegations against the chancellor or a

member of the Board of Trustees shall be referred to the chair or vice chair of the Board for processing. Such reports/complaints may be assigned to appropriate system office personnel or outside investigatory assistance may be designated.

**Subpart E. Retaliation and reprisal.** No retaliation, reprisal or intimidation, in conjunction with a complaint of discrimination/harassment, shall be tolerated by the system office, colleges, and universities. State law prohibits reprisal by a respondent, employer, labor organization, educational institution, employee, agent of the above and others as specified in statute. (Minnesota Statutes section 363.03). Any individual who retaliates against any person who testifies, assists, or participates in an investigation, proceeding or hearing in relation to a discrimination/harassment complaint shall be subject to disciplinary or other action.

Retaliation includes, but is not limited to, any form of intimidation, reprisal, coercion, discrimination, harassment, or unwanted sexual contact toward a complainant, or the complainant's relatives, friends or associates. Retaliation may occur whether or not there is a power or authority differential between the individuals involved. Reprisal also includes discrimination against an individual because that person is associated with a protected group member. Allegations of retaliation or reprisal shall be reported to the designated officer for appropriate action.

**Subpart F. False statements prohibited.** Any individual who provides false statements regarding the filing of a discrimination report/complaint or during the investigation of such a report/complaint may be subject to disciplinary or corrective action.

**Subpart G. Withdrawn Complaints.** If a complainant no longer desires to pursue a complaint, the system office, colleges, and universities reserve the right to investigate and resolve the complaint.

#### **Part 4. Right to representation.**

In accordance with federal law and applicable collective bargaining agreement and personnel plan language, represented employees may have the right to request and receive union representation during an investigatory meeting.

Nothing in this procedure is intended to expand, diminish or alter in any manner whatsoever any right or remedy available under a collective bargaining agreement, personnel plan or law. Any disciplinary action imposed as a result of an investigation conducted under this procedure will be processed in accordance with the applicable collective bargaining agreement or personnel plan.

## Part 5. Investigation and resolution.

The system office, college or university has an affirmative duty to take timely and appropriate action to stop inappropriate behavior, conduct investigations and facilitate resolutions as appropriate.

**Subpart A. Making a report/complaint.** The designated officer must be contacted in order to initiate a report/complaint. The report/complaint should be brought as soon as possible after an incident occurs. The designated officer shall retain control of the investigatory process and determine whether and/or how to proceed.

**Subpart B. Initial inquiry and review process.** After receiving a report/complaint, the designated officer shall take the steps listed below:

1. **Jurisdiction.** The designated officer shall determine whether the report/complaint is one which should be processed through another system office, college or university procedure available to the complainant; if appropriate, the designated officer shall direct the complainant to that procedure as soon as possible.
2. **Conflicts.** If the designated officer determines that the report/complaint falls within the scope of the institution's nondiscrimination policies and this procedure, the designated officer shall first determine who will conduct the complaint process. The designated officer should identify to the president or chancellor any real or perceived conflict of interest in proceeding as the designated officer for a specific complaint. If the president determines that a conflict exists, another designated officer shall be assigned.
3. **Information provided to complainant.** At the time the report/complaint is made, the designated officer shall:
  - a) inform the complainant of the provisions of the nondiscrimination policy;
  - b) provide a copy of the policy and the report/complaint procedure to the complainant;
  - c) advise the complainant of other options such as alternative dispute resolution or mediation and that the complainant may also choose to pursue other legal options; and
  - d) determine whether other individuals are permitted to accompany the complainant during investigatory interviews and the extent of their involvement.
4. **Complaint Form.** The designated officer shall insure that the complaint is documented in writing on the complaint form available from system office, college, or university authorities. The complaint form must include:
  - a) a detailed description of the facts upon which the charge is based;
  - b) name(s) of the respondent(s), if known;
  - c) a list of possible witnesses as deemed appropriate by the designated officer; and

- d) other information pertinent to the complaint.

At the conclusion of the process, the final disposition of the complaint shall be included on the complaint form.

5. **Information provided to the respondent.** At the time initial contact is made with the respondent, the designated officer shall:
  - a) inform the respondent in writing of the existence and general nature of the complaint and the provisions of the nondiscrimination policy;
  - b) provide a copy of the policy and the report/complaint procedure to the respondent;
  - c) advise the respondent of other options such as alternative dispute resolution or mediation;
  - d) explain to the respondent that in addition to being interviewed by the designated officer, the respondent may provide a written response to the allegations; and
  - e) determine whether other individuals are permitted to accompany the respondent during investigative interviews and the extent of their involvement.
6. **Processing the complaint.** The designated officer shall:
  - a. conduct a fact-finding inquiry or investigation into the complaint, including appropriate interviews and meetings;
  - b) investigate the complaint without identifying the complainant, if in the judgment of the designated officer, this would increase the likelihood of satisfactory resolution of the complaint;
  - c) inform the complainant, respondent, witnesses and other involved individuals of the prohibition against retaliation and reprisal;
  - d) create, gather and maintain investigative documentation as appropriate;
  - e) disclose appropriate information to others only on a need to know basis consistent with state and federal law, and provide a data privacy notice (Tennessee warning) in accordance with state law; and
  - f) inform the complainant and respondent of the status of the investigation at reasonable times until final disposition of the complaint.

**Subpart C. Initial inquiry and informal resolution.** After conducting an initial inquiry and review, if the designated officer determines that the issue can be resolved without further investigation, the designated officer may use one or more of the following methods to resolve the complaint:

1. suggest counseling or sensitivity training;
2. conduct training for the unit, division, or department, calling attention to the consequences of engaging in such behavior;
3. facilitate meetings between the parties;
4. separate the parties, after consultation with appropriate system office, college or university personnel;

5. prepare a written letter of agreement confirming that the respondent has been informed of the policy and complaint procedure, identifying and documenting the respondent's acceptance of the designated officer's resolution of the complaint, and stating that retaliation is prohibited;
6. other possible outcomes may include explicit agreements about future conduct, a letter of apology to the complainant, changes in workplace assignments, enrollment in a different course or program, or other appropriate action.

**Subpart D. Investigation and decision process.** If the above methods do not resolve the complaint within a reasonable period of time to the satisfaction of the designated officer, or the designated officer feels additional steps should be taken, the procedures in this subpart shall be followed.

1. Designated officer. The designated officer shall:
  - a) conduct further investigation as deemed appropriate by the designated officer;
  - b) prepare an investigation report for review by the decision-maker;
  - c) take additional investigative measures as requested by the decision-maker;
  - d) provide sufficient information to the respondent consistent with federal and state data privacy laws to allow the respondent to respond to the substance of the complaint; and
  - e) provide the investigation report to the complainant or respondent upon request unless the information is protected under state or federal law.
2. Decision-maker. After receiving the investigation report prepared by the designated officer, the decision-maker shall:
  - a) determine whether additional steps should be taken, at the discretion of the decision-maker, prior to making the decision. Additional steps may include:
    1. a request that the designated officer take additional investigative measures;
    2. a meeting with the complainant, respondent or other involved individuals. If a meeting involving a represented employee is convened, the complainant or respondent may choose to be accompanied by the bargaining unit representative, in accordance with the applicable collective bargaining agreement and federal and state law. Other employees may be accompanied by an attorney or other support person at the discretion of the decision-maker;
    3. a request for additional information which may include a written response from the complainant or respondent relating to the allegations of the complaint;
  - b) take other measures deemed necessary to reach a decision;
  - c) when making the decision, take into account the surrounding circumstances, the nature of the behaviors, the relationship(s) between

- the parties, the context in which the alleged incident(s) occurred, and other relevant factors;
- d) determine the nature, scope and timing of disciplinary or corrective action and the process for implementation if a violation of the nondiscrimination policy occurs. This may include consultation with human resource or supervisory personnel to determine appropriate discipline;
  - e) report in writing to the complainant, respondent and the designated officer her or his findings as to whether or not the nondiscrimination policy has been violated. The written answer to the complainant shall be provided within 60 days after a complaint is made unless reasonable cause for delay exists.

**Subpart E. Confidentiality.** Confidentiality cannot be guaranteed; however, care will be taken to keep investigation discussions sufficiently broad to protect the complainant's identity when appropriate. There may be instances in which the system office, college, or university has a responsibility to act even if the complainant requests that no action be taken. In such instances, the system office, college or university may investigate and take appropriate action on the basis of the facts or evidence available.

**Subpart F. Investigative data.** Information gathered during the investigation will be handled in accordance with federal and state data privacy laws.

**Subpart G. Other remedies.**

1. **Reassignment or administrative leave.** Under appropriate circumstances, the president or chancellor may reassign or place an employee on administrative leave at any point in time during the report/complaint process. In determining whether to place an employee on administrative leave or reassignment, consideration shall be given to the nature of the alleged behavior, the relationships between the parties, the context in which the alleged incidents occurred and other relevant factors. Any action taken must be consistent with the applicable collective bargaining agreement or personnel plan.
2. **Summary suspension or other action.** Under appropriate circumstances, the president or designee may impose on a student a summary suspension or other temporary measures at any point in time during the report/complaint process. A summary suspension may be imposed when, in the judgment of the president or designee, the accused student's presence on the college or university campus would constitute a threat to the safety and well-being of members of the campus community. Before implementing the summary suspension, the accused student shall be given notice of the intention to impose the summary suspension and, except in an emergency, shall be given an opportunity to present oral or written arguments against the imposition of the suspension.

After the student has been summarily suspended, the report/complaint process should be completed within the shortest reasonable time period, not to exceed nine (9) class days. During the summary suspension, the student may not enter the campus or participate in any college or university activities without obtaining prior permission from the administrator. Other temporary measures may be taken in lieu of summary suspension where the president or designee determines such measures are appropriate.

3. **Alternative dispute resolution and mediation.** The system office, colleges, and universities, in consultation with the system Office of Equal Opportunity and Diversity, may use alternative dispute resolution or mediation services as a method of resolving discrimination/harassment complaints. Alternative dispute resolution and mediation options require the voluntary participation of all parties to the complaint.

#### **Part 6. System office, college, or university action.**

The system office, college, or university shall take the appropriate corrective action based on results of the investigation and shall follow up as appropriate to ensure that the corrective action is effective. Complainants are encouraged to report any recurrences of conduct which were found to violate the system non-discrimination policies.

The decision-maker shall notify the complainant and respondent in writing of the final disposition of the complaint. Written notice to parties relating to discipline, resolutions, and/or final dispositions resulting from the report/complaint process is deemed to be official correspondence from the system office, college or university.

#### **Part 7. Appeal.**

**Subpart A. Filing an appeal.** The complainant and the respondent may appeal the decision of the decision-maker. An appeal must be filed in writing with the president or designee within ten (10) business days after notification of the decision. The appeal must state specific reasons why the complainant or respondent believes the decision was improper. In a complaint against a president or other official who reports directly to the chancellor, an appeal may be considered by the chancellor whether or not the chancellor served as the decision maker.

**Subpart B. Effect of review.** For employees represented by a collective bargaining agreement, an appeal under this procedure is separate and distinct from, and is not in any way related to, any contractual protections or procedures. During the pendency of the appeal, disciplinary or corrective action taken as a result of the decision shall be enforced. In addition, in cases involving sanctions of suspension for ten (10) days or longer, students

shall be informed of their right to a contested case hearing under Minnesota Statutes, Chapter 14.

**Subpart C. Appeal process.** The president or designee shall review the record provided and determine whether the complaint is substantiated or not substantiated. The president or designee may receive additional information if the president or designee believes such information would aid in the consideration of the appeal. The decision on appeal will be made within a reasonable time and the complainant, respondent and designated officer shall be notified in writing of the decision. The decision on appeal exhausts the complainant's and respondent's administrative remedies under this procedure except as provided herein.

### **Part 8. Education and training.**

The system office, colleges and universities shall provide education and training programs to promote awareness and prevent discrimination/harassment, such as education seminars, peer-to-peer counseling, operation of hotlines, self-defense courses, and informational material development and distribution. Education and training programs should include education about the system office, colleges and universities non-discrimination policies as well as conducting investigations, management and implementation of this procedure.

### **Part 9. Dissemination of report/complaint procedure.**

Information regarding this procedure and the system office, college or university non-discrimination policies must be provided to each student during student registration and each employee on acceptance of employment. Copies of the policies shall be conspicuously posted at appropriate locations at the system office and on college and university campuses at all times and shall include the designated officers' names, locations and telephone numbers.

Designated officers also must be identified by name, location, and phone number in informational publications such as student catalogs, student and employee handbooks, bulletin boards, campus websites or other appropriate public announcements.

### **Part 10. Maintenance of report/complaint procedure documentation.**

During and upon the completion of the complaint process, the complaint file shall be repositied in a secure location in the office of the designated officer for the system office, college or university. Access to the data shall be in accordance with the respective collective bargaining agreement or personnel plan, the Minnesota Government Data Practices Act, the Family Educational Rights and Privacy Act or other applicable law.



Designated officers are required to report investigative data concerning investigations under Board policy 1B.1 to the Office of the Chancellor on a quarterly basis.

*Effective date: February 17, 1997*

*Date & Subject of Revisions: December 18, 2000 - amended the entire policy*

*Revisions:*

*April 2, 2003 - amended portions of the policy*

*Part 1. - added second paragraph*

*Part 2, Subpart A. – added second paragraph*

*Part 2, Subpart B – added second paragraph*

*Part 3, Subpart D, 1, 2. – slight modifications*

*Part 5, Subpart G, 3. – slight modification*

*Part 6, deleted last sentence*

*Part 7, Subpart A – deleted a sentence*

*Part 7, Subpart C – slight addition*

*Part 10 – added second paragraph*

**Disposition of the complaint will be filed with the Commissioner of Department of Employee Relations within thirty (30) days of final determination.**

Bemidji State University  
Goals and Timetables  
2006-2008

Table 2

| EEO Job Group                 | Women                 |      |           | Minorities            |      |           | Persons with a Disability |      |           |
|-------------------------------|-----------------------|------|-----------|-----------------------|------|-----------|---------------------------|------|-----------|
|                               | Number Under-utilized | Goal | Timetable | Number Under-utilized | Goal | Timetable | Number Under-utilized     | Goal | Timetable |
| <b>Unclassified Employees</b> |                       |      |           |                       |      |           |                           |      |           |
| Officials and Managers        | 0                     | 0    |           | 1                     | 1    | 2006-2008 | 1                         | 1    | 2006-2008 |
| Professionals                 | 0                     | 0    |           | 9                     | 1    | 2006-2008 | 6                         | 1    | 2006-2008 |
| Faculty                       | 11                    | 4    | 2006-2008 | 29                    | 4    | 2006-2008 | 20                        | 2    | 2006-2008 |
| <b>Classified Employees</b>   |                       |      |           |                       |      |           |                           |      |           |
| Officials and Managers        | 1                     | 1    | 2006-2008 | 0                     | 0    |           | 0                         | 0    |           |
| Professionals                 | 4                     | 0    |           | 1                     | 0    |           | 4                         | 0    |           |
| Office/Clerical               | 0                     | 0    |           | 9                     | 0    |           | 6                         | 0    |           |
| Technician/Paraprofessional   | 0                     | 0    |           | 0                     | 0    |           | 2                         | 1    | 2006-2008 |
| Skilled Craft                 | 2                     | 1    | 2006-2008 | 1                     | 0    |           | 2                         | 0    |           |
| Service/Maintenance           | 10                    | 0    |           | 4                     | 0    | -----     | 5                         | 0    | -----     |

## Utilization Analysis and the University

The University's workforce has been reviewed to determine the utilization or underutilization of women, persons with disabilities, and minorities based upon data as of July 1, 2006. It is from this data that specific goals and action plans have been established. For this purpose, employees have been divided into the following job groups:

Officials and Managers: president, vice presidents, deans, three (3) unclassified administrators, and two (2) classified administrators.

Professionals: unclassified employees in the MSUAASF (Minnesota State University Association of Administrative and Service Faculty) bargaining unit and classified employees such as accountants, information technology specialists, and supervisors.

Faculty: all faculty included in the IFO (Inter-Faculty Organization) bargaining unit.

Other job groups included are classified employees such as Office/Clerical, Technician/Paraprofessional, Skilled Craft, and Service Maintenance.

Availability is the percentage or number of women, minorities or people with a disability in the relevant recruitment area who have the necessary skills to do specific jobs. This percentage comes from the 2000 United States Census data provided through the Department of Employee Relations.

Underutilization means having fewer women, minorities or people with disabilities in a particular job group (or subdivision) than would be expected by their availability.

The Availability and Utilization data for Bemidji State University's employees are included in **Table 1**.

Vacancies - The University considers each new hiring opportunity as a way to achieve its overall objective of addressing the underutilization of women, persons with disabilities, and minorities within its workforce. At the same time, it senses that its goals in affirmative action must be accompanied by vigorous employee development programs in order to ensure greater involvement of women, persons with disabilities, and minorities in senior positions of responsibility within the institution.

For any new or unanticipated vacancies occurring during the applicable 2006-2008 time frame, Bemidji State University will set its affirmative action goals in keeping with the data, structure, and objectives reported in this Plan. As a complement to this Plan is the University's special interest in encouraging the professional development plans of its employees and the promotion, through educational efforts, of an environment supportive of its affirmative action objectives.

The Goals and Timetables (2006-2008) for Bemidji State University are shown in **Table 2**.

**Bemidji State University  
Utilization Analysis  
Workforce as of July 1, 2006**

**Table 1**

| EEO Job Group                       | Women           |             |              |              |           |                  | Minorities     |             |              |           |                  | Persons with Disabilities |             |               |           |                  |
|-------------------------------------|-----------------|-------------|--------------|--------------|-----------|------------------|----------------|-------------|--------------|-----------|------------------|---------------------------|-------------|---------------|-----------|------------------|
|                                     | Total Employees | Total Women | % IN GRP     | % AVAIL      | # AVAIL   | # Under-utilized | Total Minority | % IN GRP    | % AVAIL      | # AVAIL   | # Under-utilized | Total Disabled            | % IN GRP    | % AVAIL       | # AVAIL   | # Under-utilized |
| A                                   | B               | C           | D            | E            | F         | G                | H              | I           | J            | K         | L                | M                         | N           | O             | P         | Q                |
| <b>Unclassified Employees</b>       |                 |             |              |              |           |                  |                |             |              |           |                  |                           |             |               |           |                  |
| Officials and Managers              | 10              | 5           | 50.0%        | 38.8%        | 4         | 0                | 1              | 10.0%       | 17.8%        | 2         | 1                | 0                         | 0.0%        | 11.31%        | 1         | 1                |
| Professionals                       | 68              | 39          | 57.4%        | 53.7%        | 37        | 0                | 5              | 7.4%        | 20.6%        | 14        | 9                | 1                         | 1.5%        | 10.88%        | 7         | 6                |
| <b>Subtotal</b>                     | <b>78</b>       | <b>44</b>   |              |              |           |                  | <b>6</b>       |             |              |           |                  | <b>1</b>                  |             |               |           |                  |
| <b>Faculty</b>                      |                 |             |              |              |           |                  |                |             |              |           |                  |                           |             |               |           |                  |
| Arts and Letters                    | 53              | 28          |              |              |           |                  | 5              |             |              |           |                  | 0                         |             |               |           |                  |
| Professional Studies                | 75              | 29          |              |              |           |                  | 4              |             |              |           |                  | 2                         |             |               |           |                  |
| Social and Natural Sciences         | 69              | 22          |              |              |           |                  | 2              |             |              |           |                  | 0                         |             |               |           |                  |
| Other Faculty Professionals         | 5               | 4           |              |              |           |                  | 0              |             |              |           |                  | 0                         |             |               |           |                  |
| <b>Subtotal</b>                     | <b>202</b>      | <b>83</b>   | <b>41.1%</b> | <b>46.3%</b> | <b>94</b> | <b>11</b>        | <b>11</b>      | <b>5.4%</b> | <b>20.0%</b> | <b>40</b> | <b>29</b>        | <b>2</b>                  | <b>1.0%</b> | <b>10.88%</b> | <b>22</b> | <b>20</b>        |
| <b>Total Unclassified Employees</b> | <b>280</b>      | <b>127</b>  |              |              |           |                  | <b>17</b>      |             |              |           |                  | <b>3</b>                  |             |               |           |                  |
| <b>EEO Job Group</b>                |                 |             |              |              |           |                  |                |             |              |           |                  |                           |             |               |           |                  |
|                                     |                 |             |              |              |           |                  |                |             |              |           |                  |                           |             |               |           |                  |
| A                                   | B               | C           | D            | E            | F         | G                | H              | I           | J            | K         | L                | M                         | N           | O             | P         | Q                |
| <b>Classified Employees</b>         |                 |             |              |              |           |                  |                |             |              |           |                  |                           |             |               |           |                  |
| Officials and Managers              | 2               | 0           | 0.0%         | 37.8%        | 1         | 1                | 1              | 50.0%       | 5.1%         | 0         | 0                | 0                         | 0.0%        | 11.30%        | 0         | 0                |
| Professionals                       | 41              | 18          | 43.9%        | 53.8%        | 22        | 4                | 2              | 4.9%        | 8.0%         | 3         | 1                | 0                         | 0.0%        | 10.88%        | 4         | 4                |
| Office/Clerical                     | 72              | 69          | 95.8%        | 73.0%        | 53        | 0                | 1              | 1.4%        | 13.4%        | 10        | 9                | 2                         | 2.8%        | 11.56%        | 8         | 6                |
| Technician/Paraprofessional         | 13              | 12          | 92.3%        | 63.1%        | 8         | 0                | 2              | 15.4%       | 6.8%         | 1         | 0                | 0                         | 0.0%        | 11.90%        | 2         | 2                |
| Skilled Craft                       | 23              | 0           | 0.0%         | 7.8%         | 2         | 2                | 1              | 4.2%        | 7.1%         | 2         | 1                | 1                         | 4.2%        | 11.50%        | 3         | 2                |
| Service-Maintenance                 | 45              | 10          | 22.2%        | 45.4%        | 20        | 10               | 3              | 6.7%        | 16.0%        | 7         | 4                | 0                         | 0.0%        | 11.37%        | 5         | 5                |
| <b>Total Classified Employees</b>   | <b>196</b>      | <b>109</b>  |              |              |           |                  | <b>10</b>      |             |              |           |                  | <b>3</b>                  |             |               |           |                  |

Bemidji State University  
Goals and Timetables  
2006-2008

Table 2

| EEO Job Group                 | Women                 |      |           | Minorities            |      |           | Persons with a Disability |      |           |
|-------------------------------|-----------------------|------|-----------|-----------------------|------|-----------|---------------------------|------|-----------|
|                               | Number Under-utilized | Goal | Timetable | Number Under-utilized | Goal | Timetable | Number Under-utilized     | Goal | Timetable |
| <b>Unclassified Employees</b> |                       |      |           |                       |      |           |                           |      |           |
| Officials and Managers        | 0                     | 0    |           | 1                     | 1    | 2006-2008 | 1                         | 1    | 2006-2008 |
| Professionals                 | 0                     | 0    |           | 9                     | 1    | 2006-2008 | 6                         | 1    | 2006-2008 |
| Faculty                       | 11                    | 4    | 2006-2008 | 29                    | 4    | 2006-2008 | 20                        | 2    | 2006-2008 |
| <b>Classified Employees</b>   |                       |      |           |                       |      |           |                           |      |           |
| Officials and Managers        | 1                     | 1    | 2006-2008 | 0                     | 0    |           | 0                         | 0    |           |
| Professionals                 | 4                     | 0    |           | 1                     | 0    |           | 4                         | 0    |           |
| Office/Clerical               | 0                     | 0    |           | 9                     | 0    |           | 6                         | 0    |           |
| Technician/Paraprofessional   | 0                     | 0    |           | 0                     | 0    |           | 2                         | 1    | 2006-2008 |
| Skilled Craft                 | 2                     | 1    | 2006-2008 | 1                     | 0    |           | 2                         | 0    |           |
| Service/Maintenance           | 10                    | 0    |           | 4                     | 0    | -----     | 5                         | 0    | -----     |

## PROGRAM OBJECTIVES

2006-2008

| <u>STEP</u>  | <u>RESPONSIBLE PARTY</u>                     | <u>IMPLEMENTATION DATE</u>                           | <u>ACTION STEP</u>   |
|--|--|--|--|
| 1) Conduct candidate selection review.   | Affirmative Action Office<br>Human Resources | Ongoing with review of progress quarterly            |  |
| 2) Examine pre-hire review process to determine effectiveness.   | Affirmative Action Committee<br>AAO          |  | results.   |
| 3) Continue to revise unclassified vacancy advertising plan to solicit candidates from protected groups. | AA Committee<br>AAO<br>Human Resources       | Ongoing  |  |
| 4) Continue to revise unclassified staff hiring guidelines.  | AA Committee<br>AAO<br>Human Resources       | Ongoing  |  |
| 5) Review and update vacancy procedures and AA Hiring Guidelines for Classified Staff.                   | AAO<br>Human Resources<br>AA Committee       | 10/06  | Review effectiveness of current guidelines. Recommend changes, solicit input from bargaining units, implement revisions. |
| 6) Recruit minority job candidates through Indian Employment Jobs Coordinator                            | Human Resources                              | Ongoing with activity increasing as vacancies occur. | Provide notice of vacancies to appropriate agencies.   |



|   |   |   |   |
|---|---|---|---|
| 7) Establish and maintain working relationship with editors of local minority newspapers (Native American Press & tribal newspapers) for vacancy advertising. | Human Resources<br>AAO                        | Ongoing with activity increasing as vacancies occur.        | Continue to advertise vacancies in tribal papers and local minority newspaper.                                |
| 8) Continue placement of vacancies in national & Twin Cities regional publications with a significant distribution rate among protected group persons.        | Human Resources<br>AAO                        | Ongoing with activity increasing as vacancies occur.        | Send vacancy announcements as they occur. Maintain current listings of publication information sources.       |
| 9) Refer all employee, student, and supervisory accessibility concerns to Physical Plant Director   | Human Resources<br>AAO<br>Disabilities Office | Ongoing process   |   |
| 10) Promote employment of females & racial minorities in professional occupations through employment availability advising.                                   | AAO   | Ongoing<br><br>Quarterly                                    | AAO provides employment availability data to human relations classes.<br>-Repeat for human relations classes. |
| 11) Promote Cultural Diversity/Civility among the campus community  | Management<br>Human Resources<br>AAO          | Quarterly<br><br>Ongoing with review of progress quarterly. | Responsible Men/<br>Responsible Women program.<br>Employee Handbook.  |





---

---

## METHODS OF AUDITING

---

---

### **METHODS OF AUDITING, EVALUATING, REPORTING PROGRAM SUCCESS**

Detailed in our University Checklist for Filling Vacancies is a step that we employ as a method to audit and evaluate the effectiveness of our affirmative action efforts.\* After the initial screening of applications is complete, the search committees submit all application materials along with their recommendation for the list of finalists to the Affirmative Action Officer for pre-interview review. As a result of the review process, the Affirmative Action Officer will not remove but may add additional qualified candidates, who are protected group persons, to the pool of finalists. The Affirmative Action Officer, in consultation with the appropriate Dean/Administrative Head, may decide to extend or terminate the search if the affirmative action goals are not being met by the current pool of candidates. As a part of the hiring process, the respective Vice President reviews and takes action on recommendations for hire and the Affirmative Action Officer reviews and takes action on these recommendations.

**\* See Appendix C for Policy for Filling Unclassified Positions.**

In actively working to employ and retain our workforce with the application of affirmative action principles, the Affirmative Action Officer reviews monthly statistics reflecting our current complement based on underrepresented group members. The Human Resources Office performs record keeping on the number of hires, turnover rates, monitors the hiring process and provides data on the process via a required form. As part of the evaluation function, the Affirmative Action Officer will evaluate the effectiveness of the Affirmative Action Plan by reviewing disciplinary actions taken during the past quarter including review of job classification, bargaining unit, racial/ethnic group, sex, and disability status. Additionally, the Affirmative Action Officer will review formal discrimination complaints filed in the past quarter and periodically review recruitment sources, strategies used, and the results. This data will be used to help fill specific vacancies for which goals have been set to reach utilization based upon availability.

### **PRE-EMPLOYMENT REVIEW**

State law governing affirmative action programs requires Bemidji State University to establish methods of auditing, evaluating and reporting program success. This includes a procedure for pre-employment review of all hiring decisions for units where underutilization currently exists. When such a vacancy occurs, the hiring procedures as detailed on the following pages will be followed **before** an offer of employment is made.

## **HIRING PROCEDURES FOR UNCLASSIFIED STAFF AT BEMIDJI STATE UNIVERSITY**

1. Before preparing a vacancy packet, the Dean or administrative head shall receive written approval from the appropriate Vice President to begin the search.
2. A vacancy packet consisting of the following shall be submitted to the Affirmative Action Officer (AAO) for approval:
  - a. Requisition for Authorization of Position and Permission to Search Form
  - b. Vacancy Notice:

This shall include a statement of the position's responsibilities, qualifications required, and the anticipated duration of employment. All qualifications shall be job related and include formal education, previous employment experience where applicable, cultural and volunteer experience, and demonstrated competencies. Each vacancy notice shall include standard AA/EEO information and other BSU or MnSCU required information provided by the Human Resources Office.
  - c. Search Committee Interview Questions:

All questions shall be based on the qualifications and duties stated in the vacancy notice and all candidates shall be asked the same questions by the search committee. This does not preclude asking job-related follow-up questions based on interviewees' responses. If the questions are prepared by the supervisor, it is recommended they be shared with the committee for review and comment prior to finalization. The committee shall discuss the characteristics of answers to each question, which will be regarded as acceptable.
  - d. Advertising Plan:

Ads shall be placed as described in the "Bemidji State University Policy on Filling Unclassified Positions".
  - e. Membership of Search Committee:

The members of the search committee shall be chosen in a manner, which includes the participation of women, minorities, and other underrepresented groups and shall be submitted to the Affirmative Action Officer for approval. In the event that representatives from the underrepresented groups are not normally available, the administrative head shall prepare a plan to include such representation for the approval of the dean or appropriate vice president and the Affirmative Action Officer.
- 1) Excluded Management Positions - University President may invite bargaining units to appoint a specific number of members to the committee. President then makes additional appointments from other constituent groups subject to approval by the Affirmative Action Officer.

- 2) MSUAASF Positions - If the position greatly affects the working operations of the faculty, the Vice President, in whose area the vacancy has occurred, may invite the IFO to appoint a specified number of members to the committee. The Vice President will also invite MSUAASF to appoint members and may invite representatives from other units and/or from other constituent groups subject to approval by the Affirmative Action Officer.
  - 3) IFO Positions - If the vacancy occurs in a department/unit, the department/unit will select committee members, to be supplemented by not less than one representative appointed by the respective dean. The respective Dean/Vice President shall determine representation on new, interdepartmental or non-teaching department search committees, requesting specific bargaining unit representation as appropriate. All search committees are subject to approval by the Affirmative Action Officer.
- f. Pre-Interview Screening Form:  
A screening form, which contains job-related criteria based on the qualifications stated in the vacancy notice, is to be used to evaluate the credentials of all applicants.
  - g. Evaluation Form for Interview:  
An evaluation form with job-related criteria based on the qualifications and duties advertised in the vacancy notice shall be prepared. This form shall include anchor interview responses.
  - h. Search committees are encouraged to consider the applications of probationary and permanent/tenured employees who have received notice of layoff/retrenchment and /or non-tenure track employees who have received notice of non-renewal based on budgetary considerations.

All vacancy packets must be approved by the Dean or administrative head of the area and the appropriate Vice President before forwarding to the AAO/EEO. Incomplete vacancy packets will be returned to the Dean or administrative head of the area in which the vacancy occurred. Any changes made in the vacancy packet which do not involve the returning of the packet to the Dean or administrative head will be communicated to the Dean or administrative head by the Human Resources Office. Any changes made by the Dean or administrative head (or the search committee) subsequent to approval of the vacancy packet by the AAO/EEO shall be communicated to the AAO/EEO. Unapproved vacancy packets shall be returned to the appropriate Vice President by the AAO/EEO.

3. The EEO will forward the approved vacancy packet to the Human Resources Office for advertising and approval of the vacancy by the MnSCU Office.
4. Each vacancy shall be evaluated by the AAO to determine if the staffing pattern of the department or program area with the vacancy is consistent with the availability of members of underrepresented groups in that discipline. If there are disparities, a goal to hire a qualified member of an underrepresented group shall be set. The Dean or administrative head of the area with the vacancy shall be notified by the AAO of the goal set and shall in

turn notify the search committee. Appropriate recruitment for the underrepresented group shall take place and attempts to meet that goal shall be made in the selection of the candidate.

5. Applications should be received and processed by the Office of the College Dean or administrative head of the area in which the vacancy occurred. Duties of this office shall include:
  - a. All applications shall be collected and held by this office until after the advertised posted deadline. Names of candidates shall not be released to the interview committee until the interview questions are finalized.
  - b. All applicants shall be sent a letter indicating receipt of the application, a vacancy notice, and a BSU affirmative action form. (The vacancy notice and BSU form are available from the Human Resources Office).
  - c. All applicants not selected for a position shall be sent a letter of non-acceptance by the Dean or Director immediately after the selection and hiring of the successful candidate.
  - d. The Dean or administrative head shall supervise the recruiting efforts and ensure that special recruitment efforts are directed toward underrepresented groups.
  - e. No files may be released for review by the screening committee until after the posted deadline.

Rev. 4/23/03

## Procedures of the Formation and Operation of the Search Committee

The following guidelines shall be followed by the Dean or Administrative head of the area in which the vacancy occurred:

1. The search committee shall be chosen in a manner which includes the participation of women, minorities, and other underrepresented groups. At a minimum, each committee shall include at least one (1) member of a protected group (women, minorities, and persons with disabilities), or a representative from outside the department or administrative area where the vacancy has occurred.
2. The AAO and the Dean or administrative head shall meet with the search committee and inform it of the commitment of MnSCU and the University to affirmative action, the need to adhere to established procedures, and of selection and interview techniques which provide for fair consideration of all applicants. The AAO and the Dean or administrative head may perform an in service workshop on hiring procedures for all faculty or staff in his/her area at the beginning of the academic year in lieu of meeting separately with each committee.
3. The criteria used in evaluating a candidate's qualifications shall be job-related, as reflected in the vacancy notice. The search committee shall prepare a screening form, which contains job-related criteria to be used to evaluate the candidates' credentials.
4. A set of job-related interview questions should be asked of all candidates interviewed. Job-related interview questions based on interviewees' responses and job-related questions asked in informal interview sessions do not need prior approval from the AAO/EEO. These questions must be finalized prior to the release of applicants' names.
5. All interviews of faculty should include a lecture or seminar presentation of the candidate's choice.
6. Unofficial transcripts are acceptable for the screening process. However, an official transcript(s) from all schools attended confirming all information on the unofficial transcript(s) shall be necessary before a contract is issued.
7. Names, telephone numbers, and addresses of references shall be included as part of the application packet. If telephone follow-up on references is conducted, a standard form shall be used and notes and other pertinent information shall be taken and permanently placed in the candidate(s)' files during the screening process as part of the materials used for evaluation.
8. Members of the search committee shall complete the screening forms before recommending that candidates be invited for an interview.
9. When candidates have been selected by the screening committee for interviews, the committee shall forward the files, screening forms, and recommendation to the appropriate Dean or administrative head for approval.

10. The Dean or administrative head, after review, will forward the files, screening forms, search committee recommendation, and his/her recommendation to the AAO/EEO.
11. The AAO/EEO shall approve or make recommendations for modifications in the committee's recommendation for persons to be interviewed without directly or indirectly revealing the protected group status of candidates.
12. The evaluation form with job-related criteria based on qualifications and duties advertised in the vacancy notice shall be used to evaluate the interview.
13. At the conclusion of the interviews, the chair of the search committee shall send a search summary form, appropriate supporting documentation and the recommendation of the committee for employment to the appropriate Dean or administrative head. The Interview Evaluation Forms must be completed for all persons interviewed before recommending employment of any candidate. A search summary form consists of a rationale for selecting the candidate recommended for hire and a rationale for non-selection of the unsuccessful candidates who were interviewed.
14. If the interviewed candidates are determined to be qualified and the search committee has determined that the process has produced a satisfactory pool of candidates, the selection process will continue. If the qualifications of the finalists for the position are relatively equal, consideration will be given to Affirmative Action goals in reviewing the search committee's recommendation.
15. The Dean or administrative head shall forward the committee's recommendation, the Faculty Appointment Request Form, the search summary form, his/her recommendation, and appropriate supporting documentation including evaluation forms to the AAO for review to ensure the process was nondiscriminatory. Any appeal of the AAO decision shall be made to the EEO.
16. The EEO shall notify the appropriate Vice President of completion of review. No commitment of employment, salary, working conditions or any other contractual matter will be made by anyone other than the Dean or Vice President. The official offer of employment may be made orally by the Dean only after receiving permission to do so from the Vice President. The written offer shall come from the Vice President.

## HIRING PROCEDURES FOR CLASSIFIED STAFF OF BEMIDJI STATE UNIVERSITY

Adopted 2/1/87 Revised 7/88

1. The supervisor of the new or vacant position will submit the Request to Fill form and a complete vacancy packet for permanent position vacancies. For emergency, temporary, or intermittent positions, the supervisor will initiate the Intermittent Help Request form.
2. A vacancy packet consisting of the following shall be submitted to the Affirmative Action Officer (AAO)/Equal Opportunity Officer (EOO) for approval following Vice Presidential and Presidential/Cabinet approval:
  - a. **Position Description** - To be completed in the standard format and reviewed and updated by the supervisor.
  - b. **Job Posting** - The job posting shall be in the standard format and specify days and hours of work, the specific work area, travel requirements (if any), and a general description of the duties of the position.
  - c. **Selection Criteria** - All criteria shall be related to the current position description and the current vacancy posting notice. All special criteria shall be job related and may include formal training, previous employment experience, travel requirements, etc.
  - d. **Interview Questions** - All questions shall be job related based on the qualifications and duties stated in the position description and the selection criteria, and all candidates shall be asked the same questions by the selection committee. This does not preclude asking job related follow-up questions based on interviewees' responses, nor does it preclude job related discussion sessions. All interviews shall include a demonstration of specific skills needed for the vacant position, that have not already been tested.
  - e. **Interview Evaluation Form** - An evaluation form reflecting the interview questions, the desired responses, and the manner of scoring the interviews shall be prepared.
  - f. **Membership of Selection Committee** - The members of the selection committee shall be chosen in a manner which includes the participation of women, ethnic minorities, and other underrepresented groups. Each committee shall include at least one member of a protected group (women, ethnic minorities, or persons with disabilities). The committee shall be composed of a minimum of two persons from the department/area with the vacancy and an equal number of representatives from outside the department/area.
  - g. **Screening Form for Applications/Credentials** - A screening form which reflects the selection criteria and the qualifications as stated in the position description and vacancy notice shall be used to evaluate the applications/credentials of all applicants in order to identify those finalists selected to interview.

Incomplete vacancy packets shall be returned to the supervisor of the area in which the vacancy occurred. Any changes made in the vacancy packet which do not involve the returning of the packet

to the supervisor will be communicated to the supervisor by the Human Resources Office. Any changes made by the supervisor (or the selection committee) subsequent to approval of the vacancy packet by the AAO shall be communicated to the AAO and the Human Resources Office. Unapproved vacancy packets shall be returned to the supervisor.

3. The AAO shall notify the supervisor of vacancy packet approval and forward the approved vacancy packet to the Human Resources Office for posting action.
4. If the vacancy is not filled by bid, it shall be evaluated to determine if the staffing pattern for the department or program area with the vacancy is consistent with the availability of members of underrepresented groups in that area. If there is a disparity, a goal shall be set. The supervisor of the area in which the vacancy occurred shall be notified by the AAO of the goal and shall notify the selection committee. The Affirmative Action Officer will ensure the screening selection has been nondiscriminatory.
5. Certified letters shall be sent to each eligible candidate who has been certified by the Department of Employee Relations or the local Job Service Office and recommended for interviews by the selection committee. The letters shall include a copy of the information described in Items 2a and b above. An affirmative action questionnaire which includes information concerning sex, ethnic origin, etc., is to be enclosed with instructions to forward it directly to the Affirmative Action Officer, if they wish. A period of seven (7) days from date of mailing the letter will be allowed the candidates to respond. Telephone contacts will be received by the Human Resources Office to arrange interview appointments for those candidates interested in the position.



## Procedures of the Formation and Operation of the Selection Committee

The following guidelines shall be followed by the supervisor of the area in which the vacancy exists:

1. The selection committee shall be chosen in a manner consistent with 2.f. above by the supervisor in conjunction with the AAO.
2. The supervisor and AAO shall meet with the selection committee and inform it of the commitment of the University to affirmative action, the need to adhere to established procedures, and of selection and interview techniques which provide for fair consideration of all applicants. The Affirmative Action Officer may perform an inservice workshop on hiring procedures for all supervisors at the beginning of the academic year in lieu of meeting separately with each committee.
3. The criteria used in evaluating a candidate's qualifications shall be job related, as reflected in the position description. All selection criteria are to be designated and included in the vacancy packet. The selection committee shall utilize the previously approved screening form which contains job related criteria to be used to evaluate candidates' credentials/applications.
4. A set of job related interview questions shall be asked of all candidates interviewed. Job related interview questions based on interviewees' responses do not need prior approval from the AAO.
5. Members of the selection committee shall complete the screening forms before recommending that candidates be invited for an interview.
6. When candidates from outside the University have been selected by the committee for interviews, the committee shall forward the applications, completed screening forms, a copy of the entire list of certified candidates and a recommendation to the appropriate Vice President.
7. The Vice President, after review, shall forward the applications, screening forms, eligible list, selection committee recommendation, and his/her recommendation to the AAO.
8. The AAO shall approve or make recommendations for modifications in the committee's recommendation for persons to be interviewed.
9. The interview evaluation form with job related criteria based on qualifications and duties noted in the position description shall be used to evaluate the interviews.
10. At the conclusion of the interviews, the chair of the selection committee shall send a memorandum to the appropriate Vice President consisting of a rationale for selecting the candidate recommended to be hired and a rationale for non-selection of the unsuccessful candidates who were interviewed along with appropriate supporting documentation. The Interview Evaluation Form must be completed for all persons interviewed before recommending employment of any candidate and must be included with the supporting documentation.

11. If the qualifications of the finalists for the position are relatively equal, consideration will be given to affirmative action goals in reviewing the search committee's recommendation
12. The Vice President shall forward the committee's recommendation, the Chair's memorandum, his/her recommendation, and the appropriate supporting documentation, including Interview Evaluation Forms, to the AAO for final approval.
13. The AAO shall notify the appropriate Vice President of completion of review process and approval of continuation of the hiring process.
14. The official offer of employment may be made orally by the Vice President or the Human Resources Director. The written offer shall come from the Human Resources Director. Commitment of employment, salary, working conditions or other contractual matters will be made by the appropriate Vice President.

All emergency, temporary, and intermittent appointments shall be included under these guidelines. Urgent emergency appointments may be exempted from these guidelines with approval of the Affirmative Action Officer. Changes in allocation shall be excluded.

---

---

## WEATHER EMERGENCIES AND EVACUATION

---

---

### EMERGENCY CLOSING PROCEDURES NOTIFICATION PROCESS FOR PEOPLE/EMPLOYEES WITH DISABILITIES

Bemidji State University recognizes the need of persons with disabilities during the notification process of all employees due to an emergency closing. It is the intent of Bemidji State University to establish an individualized method of notification for each employee with a disability as s/he is hired. Each means of communication will be established after conferring with the involved employee and ascertaining her/his unique situation and needs. That process will be provided to the employee and her/his supervisor in writing and will then be incorporated into the university's Emergency Closing Procedure.

If a weather-related or other emergency is declared by the President for Bemidji State University, the decision to close will be communicated to employees via the web. Weather related announcements will be posted on the BSU home page ([www.bemidjistate.edu](http://www.bemidjistate.edu)). Announcements will be made through the following media: fifteen (15) local radio stations, five (5) regional television stations, the local newspaper, (**Bemidji Pioneer**), the Associated Press and United Press International networks. Employees may also be notified directly through processes established by their respective Vice President's Office. Employees should rely only on media notices which specifically address the University. Closures announced by the Commissioner of Employee Relations do not apply to Bemidji State University employees. In the event of a closure, employees should not report to work and will remain in pay status. To inform employees who are deaf or hard of hearing, the supervisor or designee may use the Minnesota Relay Service (1-800/627-3529) to contact the employee using the TTY (teletypewriter).

#### Assessment of Weather and Travel Conditions

When weather conditions become adverse so as to be hazardous to students and/or employees, the Vice President for Finance and Administration will assess weather and travel conditions by contacting at least two\* of the following resources:

|   |                |
|---|----------------|
| -MN Highway Patrol Regional Office (24 hours access)    | 218-681-0943   |
| -Bemidji Department of Transportation "Road Conditions" | 218-755-3816   |
| -MN Department of Transportation (N MN Road Conditions) | 1-800-542-0220 |
| -Northwest Technical College Provost                    | 218-333-6611   |
| -Bemidji Area Public School Superintendent              | 218-333-3110   |
| -Beltrami County Highway Department                     | 218-333-8173   |
| -Bemidji City Road Department                           | 218-759-3583   |

The Vice President for Finance and Administration shall inquire as to the current and immediately forecast temperature, wind, condition of roads, precipitation, and any imminent road closings. If conditions place commuting students in jeopardy, the Vice President for

Finance and Administration will recommend to the President that classes be cancelled. If conditions are or are to become hazardous to employees' safety, or if road closures are imminent, the Vice President for Finance and Administration will recommend that the University be closed. In either instance, when possible, the timeframe of the class cancellation/closure will be included in the Vice President for Finance and Administration's recommendation. The Physical Plant Director will perform this assessment/recommendation in the absence of the Vice President for Finance and Administration.

### Emergency Evacuation Plans

Evacuation procedures for campus buildings will depend primarily on the type of emergency necessitating the evacuation. To a lesser extent, weather conditions and other factors may also influence the procedures.

In the event of an emergency, building occupants will be directed to proceed according to one of two possible evacuation plans. Those plans will outline procedures for either external evacuation, (i.e., evacuation to an outside area such as in the case of a fire) or internal evacuation (i.e., evacuation to a safe inside location, such as in the case of a tornado). Emergency evacuation route maps are located at various locations in all buildings. The maps indicate which route to take in the event of an emergency. Designated employees in each building will coordinate evacuations. Vice Presidents, Deans, and Directors are responsible for designating employees to implement the emergency plans, in buildings they are responsible for. The designated responsibilities include: designating assistants to assist during evacuations; notifying Security and Safety immediately of any emergency necessitating evacuation; assuring that the area is being evacuated effectively; identifying and assisting individuals that require special attention due to disabilities, to evacuate safely; assuring all occupants evacuate to the designated safe area; and, accounting for occupants after the evacuation and notifying Security and Safety if any occupants are believed to still be in the building.



**BEMIDJI**  
STATE UNIVERSITY

Bemidji, Minnesota 56601

## MINNESOTA STATE COLLEGES AND UNIVERSITIES

**System Procedure - Chapter 1 - System Organization and Administration**  
**Section B - Equal Education and Employment Opportunity**

### **Procedure 1B.0.1 Reasonable Accommodations in Employment**

#### **Part 1. Purpose**

This procedure sets forth the process to be used for responding to requests for reasonable accommodations in employment based on an applicant's or employee's disability. The scope of this procedure is limited to reasonable accommodations and is not intended to fully describe other provisions of the Americans with Disabilities Act or the Minnesota Human Rights Act.

#### **Part 2. Reasonable Accommodations in Employment**

It is the policy of MnSCU to encourage the employment and promotion of any qualified individual including qualified individuals with disabilities. The system office, college or university will not discriminate in providing reasonable accommodations to qualified individuals with a disability in regard to job application procedures, hiring, advancement, discharge, employee compensation, job training or other terms, conditions, and privileges of employment.

#### **Part 3. Definitions.**

For purposes of this procedure, the following terms have the meaning given them.

**Subpart A. Employer:** The employer is the system office, college or university.

**Subpart B. Essential Functions:** Essential functions are the fundamental job duties of the position in question. The term does not include the marginal functions of the position.

1. A job function may be considered essential for any of several reasons, including but not limited to the following:
  - a. The function may be essential because the reason the position exists is to perform that function;

- b. The function may be essential because of the limited number of employees available among whom the performance of that job function can be distributed; and/or
  - c. The function may be highly specialized so that the incumbent in the position is hired for his or her expertise or ability to perform the particular function.
2. Evidence of whether a particular function is essential includes, but is not limited to:
- a. The employer's judgment as to which functions are essential;
  - b. Written job descriptions;
  - c. The amount of time spent on the job performing the function;
  - d. The consequences of not requiring the incumbent to perform the function;
  - e. The terms of a collective bargaining agreement;
  - f. The work experience of past incumbents in the job; and/or
  - g. The current work experience of incumbents in similar jobs.

**Subpart C. Individual with a Disability:** An individual with a disability for the purposes of determining reasonable accommodations is any applicant, current employee, including student employees, or employees seeking promotion, who has a physical or mental impairment which substantially or materially limits one or more of such individual's major life activities. Generally, a disabling physical or mental condition which is expected to be temporary and from which the individual is expected to recover is not a disability under this procedure.

**Subpart D. Qualified Individual with a Disability:** A qualified individual with a disability is an individual with a disability who meets the requisite skill, education, experience and other job-related requirements of the job and who, with or without reasonable accommodation, can perform the essential functions of the job.

**Subpart E. Reasonable Accommodations:** A reasonable accommodation is a modification or adjustment to a job or employment practice or the work environment that enables a qualified individual with a disability to perform the essential functions of the job as identified at the time of the reasonable accommodation request and to access equal employment opportunities. Reasonable accommodations may also include those things which make a facility and its operations readily accessible to and usable by individuals with disabilities. Under the law, the employer has a responsibility to make reasonable accommodations for individuals with a disability only if the disability is known and it is not an undue hardship under Part 6, Subpart C.

#### **Part 4. Identification of Assigned Staff Member.**

The system office, and each college and university shall assign and identify a staff member responsible for administering requests for reasonable accommodations. **Ms. Lorena C. Cook, Assistant to the President/Affirmative Action Officer, 218/755-2900, is responsible for administering requests for reasonable accommodations.**

## **Part 5. Right to Representation.**

In accordance with applicable collective bargaining agreement language, employees may have the right to request and receive union representation during the reasonable accommodations process.

## **Part 6. Providing Reasonable Accommodations.**

**Subpart A. Job Relatedness.** Reasonable accommodations will be provided only for job-related needs of individuals with a disability. The primary factor in evaluating an accommodation's job relatedness is whether the accommodation specifically assists the individual to perform the essential functions of the job as identified at the time of the reasonable accommodation request. If the requested accommodation is primarily for the benefit of the individual with a disability to assist that individual in daily personal activities, the employer is not required to provide the accommodation. The appropriate reasonable accommodation is best determined through a flexible, interactive process that involves both the employer and the qualified individual with a disability; it may include the appropriate union representative as provided by the applicable collective bargaining agreement.

**Subpart B. Essential Functions.** The system office, college or university may deny employment or advancement in employment based on the inability of an individual with a disability to perform the essential functions of the job and may decline to make accommodations to the physical or mental needs of an employee or job applicant with a disability if:

- a. the accommodation would impose an undue hardship on the system office, college or university as provided under Subpart C.; or
- b. the individual with a disability, with or without reasonable accommodations, is not qualified to perform the essential functions of that particular job; or
- c. having the individual in the job would create a direct threat because of a significant risk to the health and safety of the individual or others and the risk cannot be eliminated by reasonable accommodation.

**Subpart C. Undue Hardship:** In determining whether providing a reasonable accommodation would impose an undue hardship on the employer, the factors to be considered include:

1. The nature and net cost of the accommodation needed;
2. The overall financial resources of the employer involved in the provision of the reasonable accommodation, the number of persons employed, and the effect on expenses and resources;
3. The overall financial resources of the employer, the overall size of the business of the employer with respect to the number of its employees, and the number, type and location of its facilities;
4. The type of operation or operations of the employer, including the composition, structure and functions of the workforce, and the geographic

- separateness and administrative or fiscal relationship of the employer in question to the covered entity; and
5. The impact of the accommodation upon the operation of the employer, including the impact on the ability of other employees to perform their duties and the impact on the employer's ability to conduct business.

**Subpart D. Documentation.** Documentation of a disability is required as part of the reasonable accommodation process unless the nature and extent of the disability is already known to the employer, or as a practical matter, the requested accommodation is minimal and the employer makes modifications for its convenience, regardless of whether the employee or applicant meets the requirements for a reasonable accommodation under this procedure.

**Subpart E. Choice of Accommodations.** The employer is not required to provide the specific accommodation requested by the individual and may choose an effective accommodation which is less expensive or easier to provide. Accommodations provided to the individual are the financial responsibility of the employer.

**Subpart F. Request Process.** The system office, colleges and universities are responsible for establishing a process for individuals with disabilities to make requests for reasonable accommodations in compliance with the Americans with Disabilities Act or the Minnesota Human Rights Act. Such process should include the following:

1. MnSCU policy statement and definitions;
2. Assignment and identification of a staff member responsible for administering requests for reasonable accommodations;
3. Provide a process for appealing a reasonable accommodations decision.

**Appeals - Employees or applicants who are dissatisfied with the decision(s) pertaining to her/his accommodation request may file an appeal with the President or her/his designee, within a reasonable period of time, for a final decision.**

**If the individual believes the decision is based on discriminatory reasons, they may pursue a complaint through the University's internal complaint procedure as indicated in this plan.**

## **Part 7. Application.**

Nothing in this procedure is intended to expand, diminish or alter the provisions of the Americans with Disabilities Act or the Minnesota Human Rights Act.

Approved by the Chancellor: May 24, 2000

**Policy for Funding Accommodations** – Funding must be approved by Bemidji State University for accommodations that do not cause an undue hardship (M.S. 43A.191(c)).



## Recruitment Plan

An active recruitment plan must be developed, implemented, revised and submitted to DOER/ODEO as part of the required Affirmative Action Plan as described in M.S. 43A.191, subdivision 3.

Information obtained in this section will be tabulated and shared with agencies once the affirmative action plans are reviewed and approved.

In order to obtain the most accurate data, do not skip any questions.

### Agency name

MNSCU- Bemidji State University

If your agency, board, school, etc. was not listed in the drop down menu, please enter it in this box:

## Recruitment Sources

### Newspapers

Newspapers used for advertising and recruitment

- Did not use any newspapers

The following newspapers were used for advertising and recruitment during the previous year: (check ALL that were used)

- Albert Lea Tribune
- Alexandria Echo-Press
- Austin Daily Herald
- Bemidji Northern Herald
- Bemidji-The Pioneer
- Brainerd Dispatch
- Chronicle of Higher Education
- Duluth News Tribune
- Eagan This Week
- Faribault Daily News
- Focus
- Focus Point
- Forest Lake Times
- Grand Rapids Herald Review
- Hibbing Daily Tribune
- Lillie Suburban
- Lowertown News
- Mankato Free Press
- Mankato Free Press

- Mesabi Daily News
- Morrison County Record
- Owatonna People's Press
- Pioneer Press - St. Paul
- Rochester Post
- South Washington county bulletin
- Star Tribune - Minneapolis
- St. Cloud Times
- Sun Current
- West Central Tribune
- Winona Daily News
- Woodbury Bulletin

If your agency used any additional newspapers for advertising and recruitment that are not listed above, please indicate here:

|                    |
|--------------------|
| Grand Forks Herald |
|                    |
|                    |
|                    |
|                    |

Diversity focused newspapers used for advertising and recruitment

- Did not use any diversity focused newspapers

The following diversity focused newspapers were used for advertising and recruitment during the previous year: (check ALL that apply)

- Access Press
- Asian American Press
- Asian Pages
- Black Issues in Higher Education
- Hispanic Outlook
- Insight News
- La Prensa
- Lakota Journal
- Lavoza Latina
- Minnesota Women's Press
- Native American Press/Ojibwe News
- Spokesman
- The Circle

If your agency used any additional diversity focused newspapers for advertising and recruitment that are not listed above, please indicate here:



|                      |
|----------------------|
| Indian Country Today |
|                      |
|                      |
|                      |
|                      |

**Websites**

Websites used for advertising and recruitment

Did not use any Websites

The following Websites were used for advertising and recruitment during the previous year: (check ALL that apply)

- State of Minnesota Employment Website
- Monster.com
- Careerbuilder.com
- Minnesotajobs.com
- Minnesota Job Bank-mnworks.org
- Did not use any Websites

If your agency used any additional Websites for advertising and recruitment that are not listed above, please indicate here:

|                  |
|------------------|
| HigherEdJobs.com |
|                  |
|                  |
|                  |
|                  |

**Job Fairs**

Job fairs attended during the previous year

Did not attend any job fairs

List the job fairs your agency attended during the previous year:

|  |
|--|
|  |
|  |
|  |
|  |

|  |
|--|
|  |
|  |
|  |
|  |
|  |
|  |
|  |

Job fairs anticipated in the next year

- Do not anticipate attending any job fairs in the next year

List the job fairs your agency anticipates attending in the next year:

|  |
|--|
|  |
|  |
|  |
|  |
|  |

**Colleges and Universities**

College and university recruitment events

- Did not participate in any college and university recruitment events

List the college and university recruitment events your agency participated in during the previous year.

|  |
|--|
|  |
|  |
|  |
|  |
|  |
|  |
|  |
|  |
|  |
|  |
|  |

**Additional recruiting methods**



Additional recruiting methods used

Did not use any additional recruiting methods

The following additional recruiting methods were used for advertising and recruitment during the previous year: (check all that apply)

- College and university postings
- Community organizations
- Trade journals
- Professional organizations
- Direct mail
- Referrals from agency employees

If your agency used any additional recruiting methods that are not listed above, please indicate here:

|  |
|--|
|  |
|  |
|  |
|  |
|  |

What recruitment sources and strategies did you find most successful during the previous year? Please share any new and innovative strategies used.

|  |  |
|--|--|
| Newspapers, discipline-specific publications, and HigherEdJobs.com | <input type="button" value="▲"/><br><input type="button" value="▼"/> |
|--|--|

What recruitment sources and strategies used during the previous year did you find to be least productive or cost effective?

|      |  |
|------|--|
| None | <input type="button" value="▲"/><br><input type="button" value="▼"/> |
|------|--|

List up to 5 job classifications your agency most frequently recruited for in the previous year. For example: RN, Corrections Officer, Office and Administrative Specialist.

|                            |
|----------------------------|
| Faculty                    |
| General Maintenance Worker |
| Professional Workers       |
|                            |
|                            |



What do you expect your agency's greatest recruiting needs to be for the upcoming year?

Faculty

Indicate the total expenses incurred for all recruitment sources during the previous year

Total expenses \$31,202

### Projected Hiring Opportunities (Administrative Procedure 9A)

During the upcoming year, what hiring opportunities does your agency project: (check ALL that apply)

- Expect agency to be downsizing
- Expect no hiring opportunities
- Anticipate that hiring will be limited to refilling critical positions vacated through turnover
- Anticipate that expansion of existing programs and/or new initiative will increase hiring

Additional comments regarding upcoming hiring opportunities:

When hiring opportunities occur in the upcoming year, which of the following recruitment strategies will your agency use: (check ALL that apply)

- Advertise in newspapers
- Advertise on Internet
- Advertise with community organizations
- Develop and utilize recruitment sources which will reach protected group applicants.
- Consult with the State AA/ADA coordinator
- Consult with the DOER recruiter
- College and university postings
- Community organizations
- Trade journals
- Professional organizations
- Direct mail
- Referrals from agency employees

If your agency anticipates using any additional recruitment strategies that are not listed, please list them here:



|  |
|--|
|  |
|  |
|  |

### Internships

(Administrative Procedure 9A; Administrative Procedure 21E)

In the event that your agency has the opportunity to develop internship positions:

- Check here if you agree to recruit and select interns following the procedures set forth in the State's Internship Administrative Procedures

Would your agency like to have information or need help developing internship opportunities?

- Yes
- No

### Disability Recruitment Strategies

(Administrative Procedure 19.1A)

To improve the recruitment of persons with disabilities, our agency will use the following resources: (check ALL that apply)

- Professional Organizations
- Non-Profit Organizations
- Publications
- Websites
- Minnesota WorkForce Centers
- ADA Minnesota
- State Services for the Blind
- Vocational Rehabilitation
- Deaf and Hard of Hearing Services
- Minnesota State Council on Disability

If your agency anticipates using any additional disability resources that are not listed above, please list them here:

|  |
|--|
|  |
|  |
|  |
|  |
|  |

### Supported Employment

(M.S. §43A.191, Subd. 2 (d); Administrative Procedure 19.1A)

We support the employment of individuals with disabilities and will review vacant positions to determine if job tasks might be performed by a supported employment worker.

We will work with the State ADA Coordinator to recruit and hire individuals for supported employment positions.

- Check here if you agree with and will follow the guidelines in the above statement.

Would your agency like to have additional information or need help developing supported employment positions?

- Yes
- No

Before pressing SUBMIT, please print a copy of the survey and your responses for your records. Thank you!

Submit Survey



---

---

## RETENTION PLAN

---

---

The University has a Center for Professional Development which designs and administers the orientation of new faculty each fall and the assignment of established faculty to serve as mentors. Staffed and directed by faculty members, the Center, established in the fall of 1986, addresses a wide variety of professional development needs. It sponsors lectures, workshops, and symposia using guest speakers as well as faculty from our University. It also publishes a quarterly newsletter to serve as a medium for exchanging ideas about teaching and higher education and to highlight professional development activities at the University. It also maintains an on-campus resource center for faculty use, including a small library of books, videos, and other materials regarding issues in higher education. All faculty and members of the professional staff are encouraged to make use of these services provided by the Center.

The respective Vice Presidents have the responsibility of retention efforts and activities within their areas. Dr. Joann Fredrickson, Provost and Vice President for Academic and Student Affairs, is responsible for the retention of faculty. Mr. William Maki, Vice President for Administrative Affairs, is responsible for the retention of staff in the administrative departments. The University is currently advertising for a Vice President for Student Development and Enrollment who will be responsible for the retention of staff in the student affairs departments.

Several cultural events and activities geared towards the retention of students and staff are conducted on the campus during the academic year. Some of the activities we host on a regular basis are Black History Month, Women's History Month, the Ojibwe Art Expo, the American Indian Awards Banquet and Annual Pow-wow, and Disability Awareness Week. These activities are sponsored by the University in collaboration with student services offices or programs and faculty services programs such as the American Indian Resource Center, the American Indian Studies Program, the Women's Studies Program, TRIO/Student Support Services, and the Black History Month Committee.

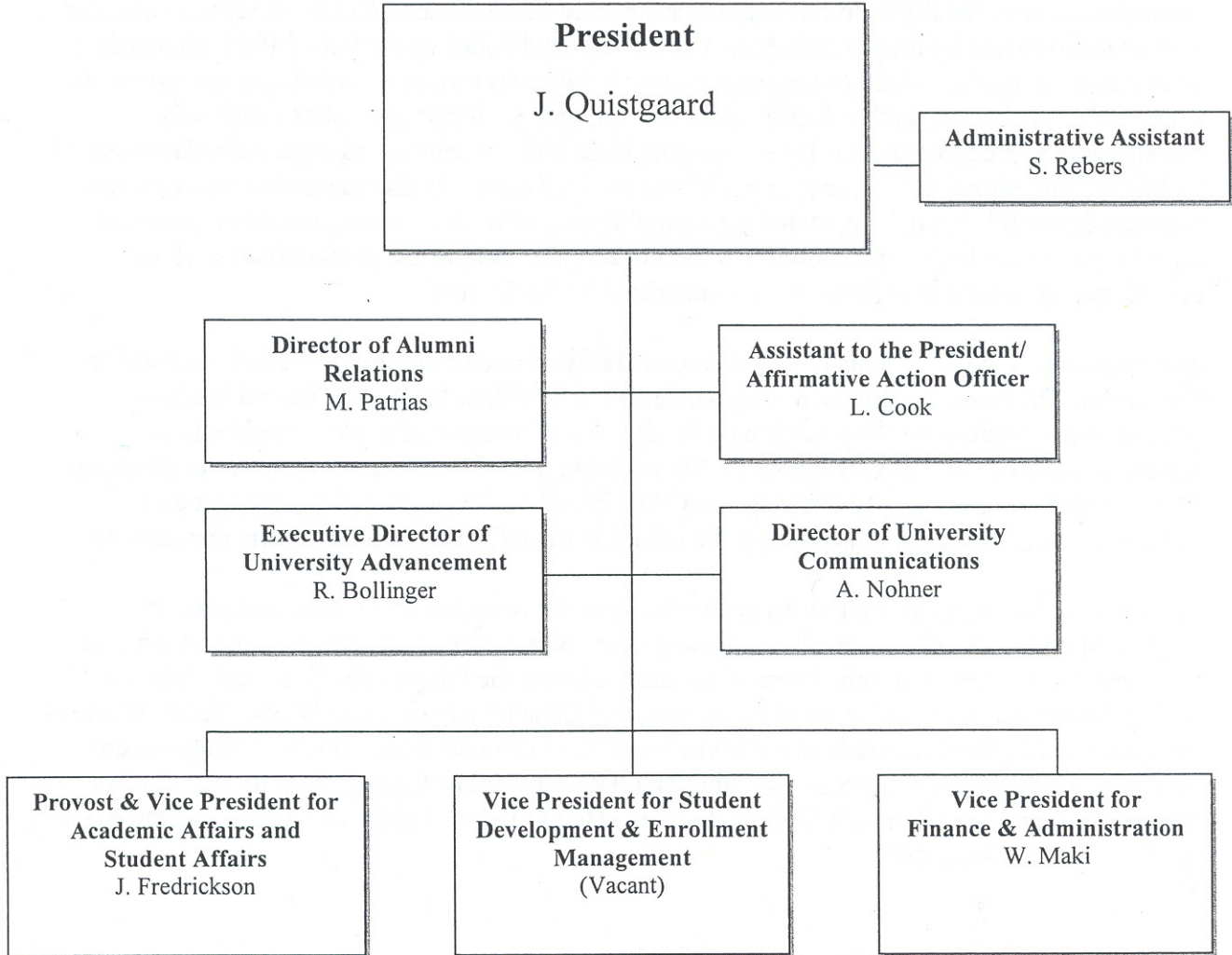
### SEPARATION ANALYSIS:

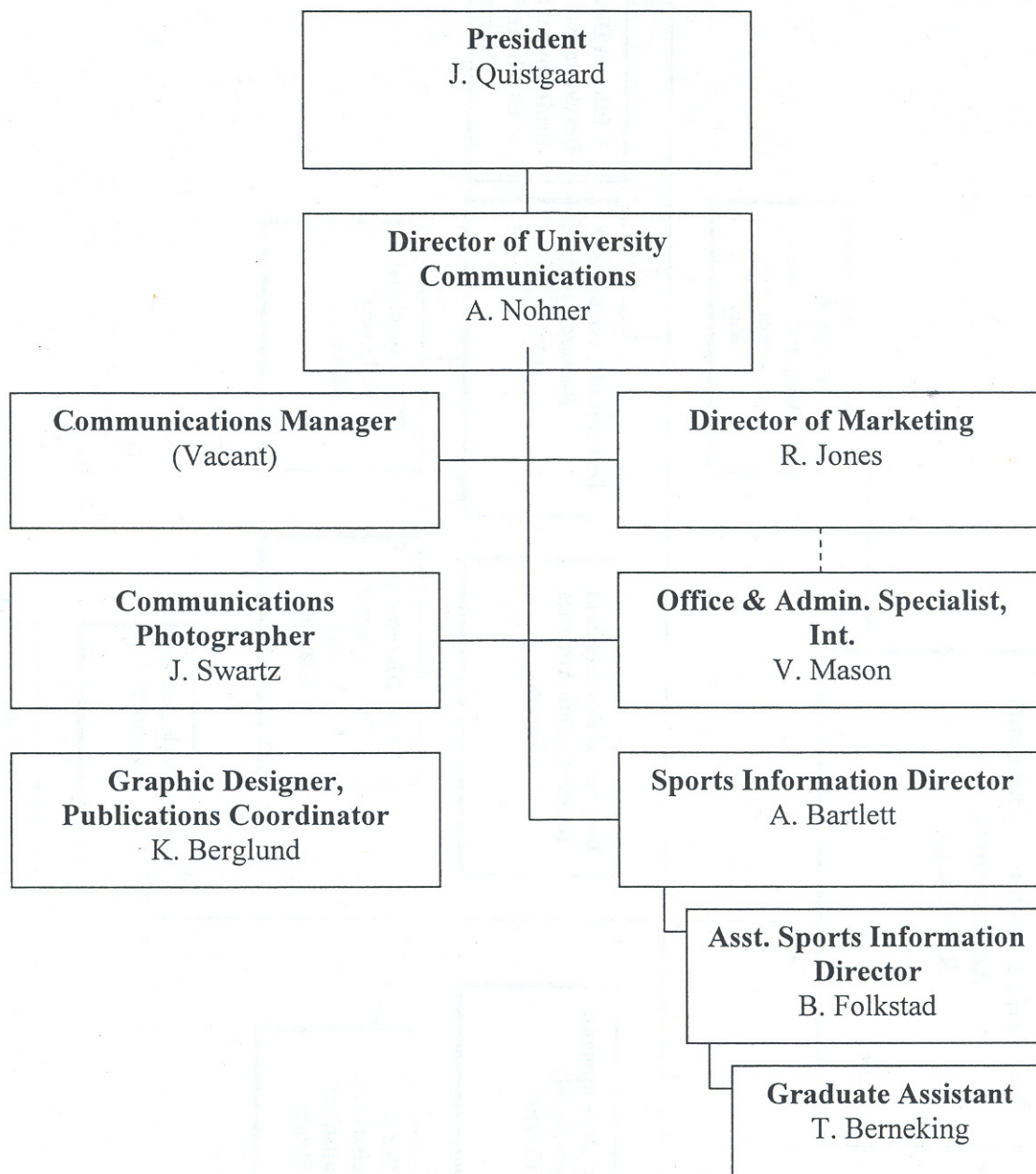
During fiscal years 2005 and 2006, a total of twenty-seven (27) non-academic employees separated from Bemidji State University. These separations were **voluntary** as follows:

|                          |         |              |
|--------------------------|---------|--------------|
| Retirements - 7 females  | 6 males | 0 minority   |
| Resignations - 6 females | 8 males | 2 minorities |

In conclusion, the reasons for separation are not significantly different between protected group employees and non-protected group employees.

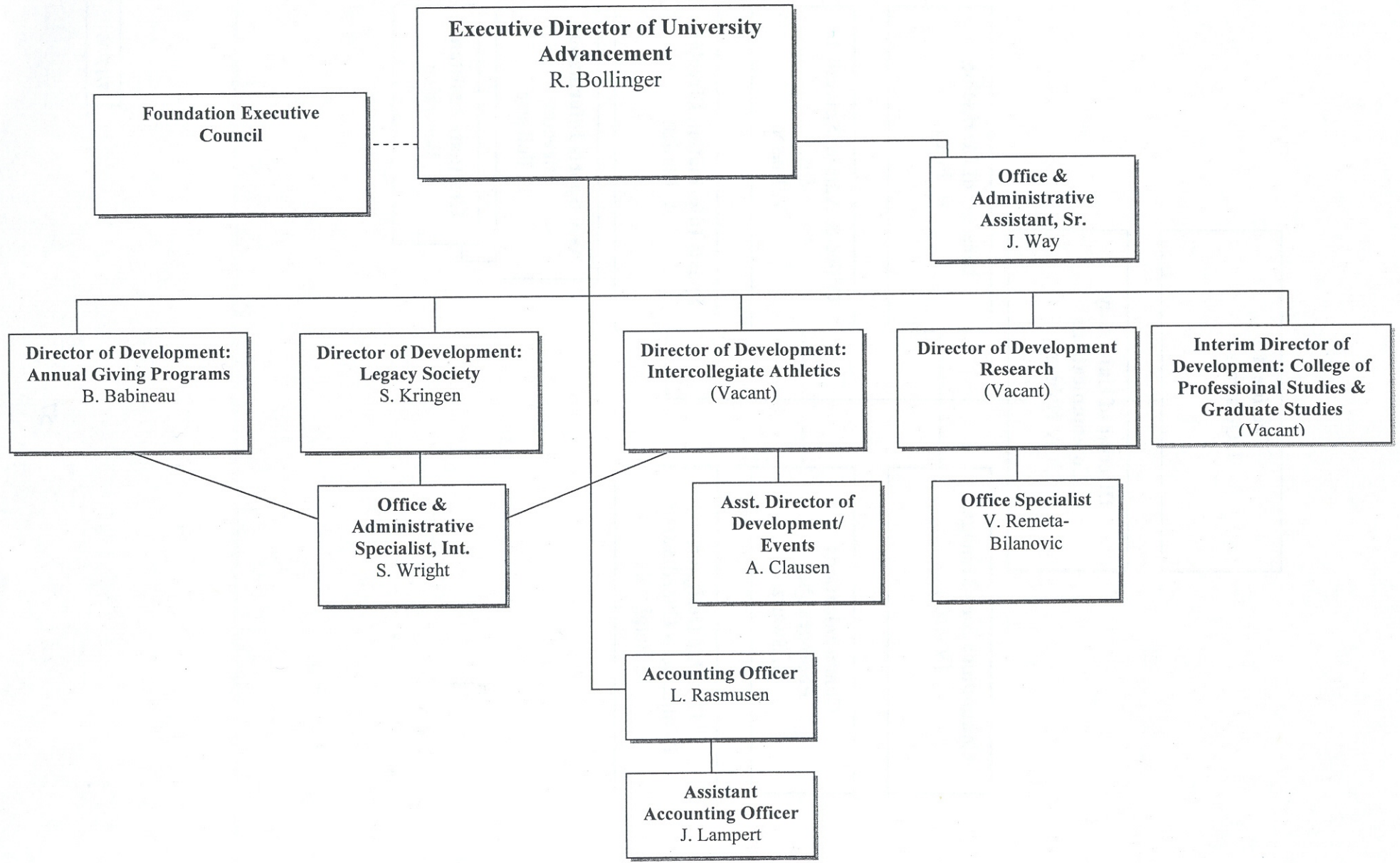
# Bemidji State University



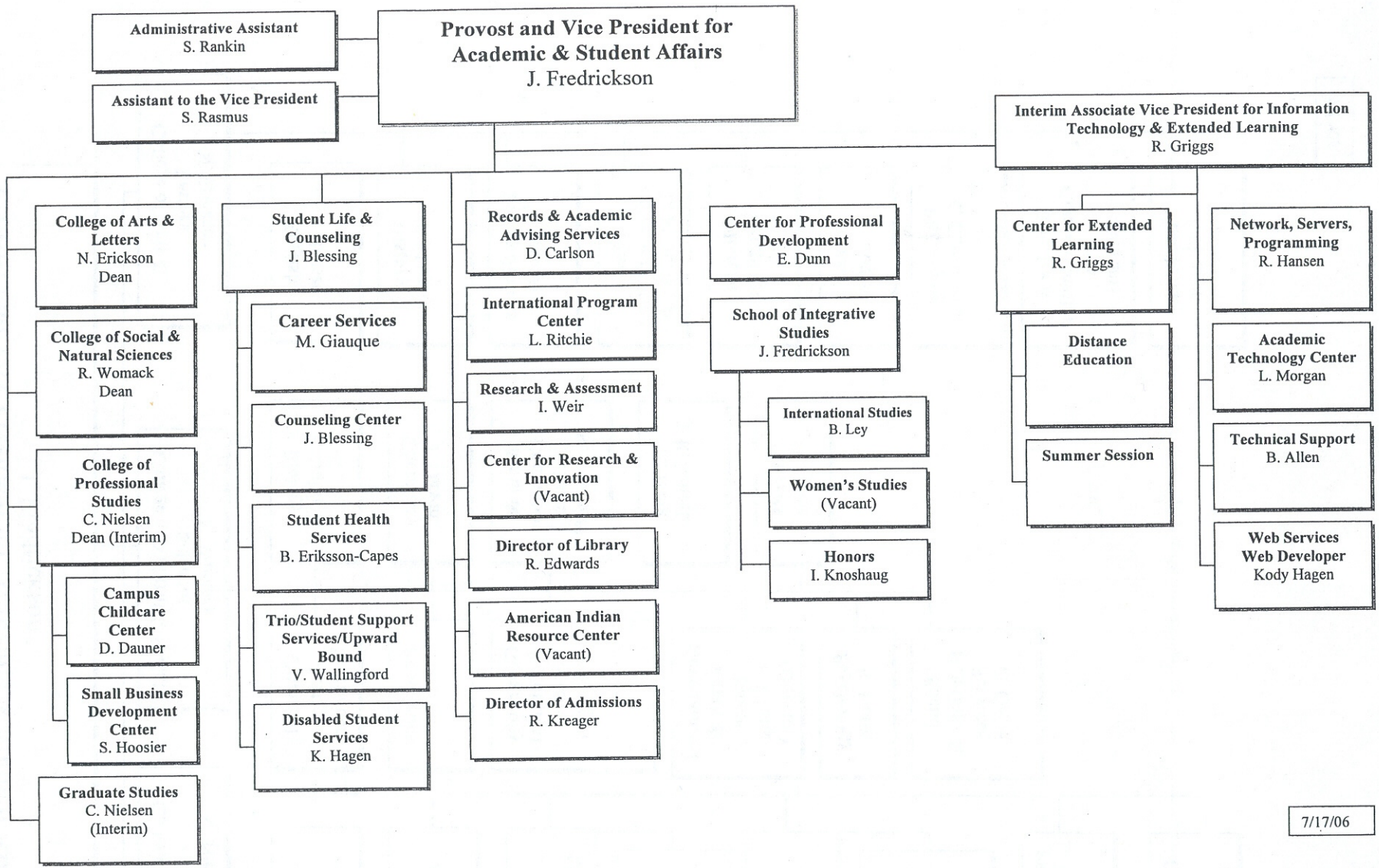


7/17/06





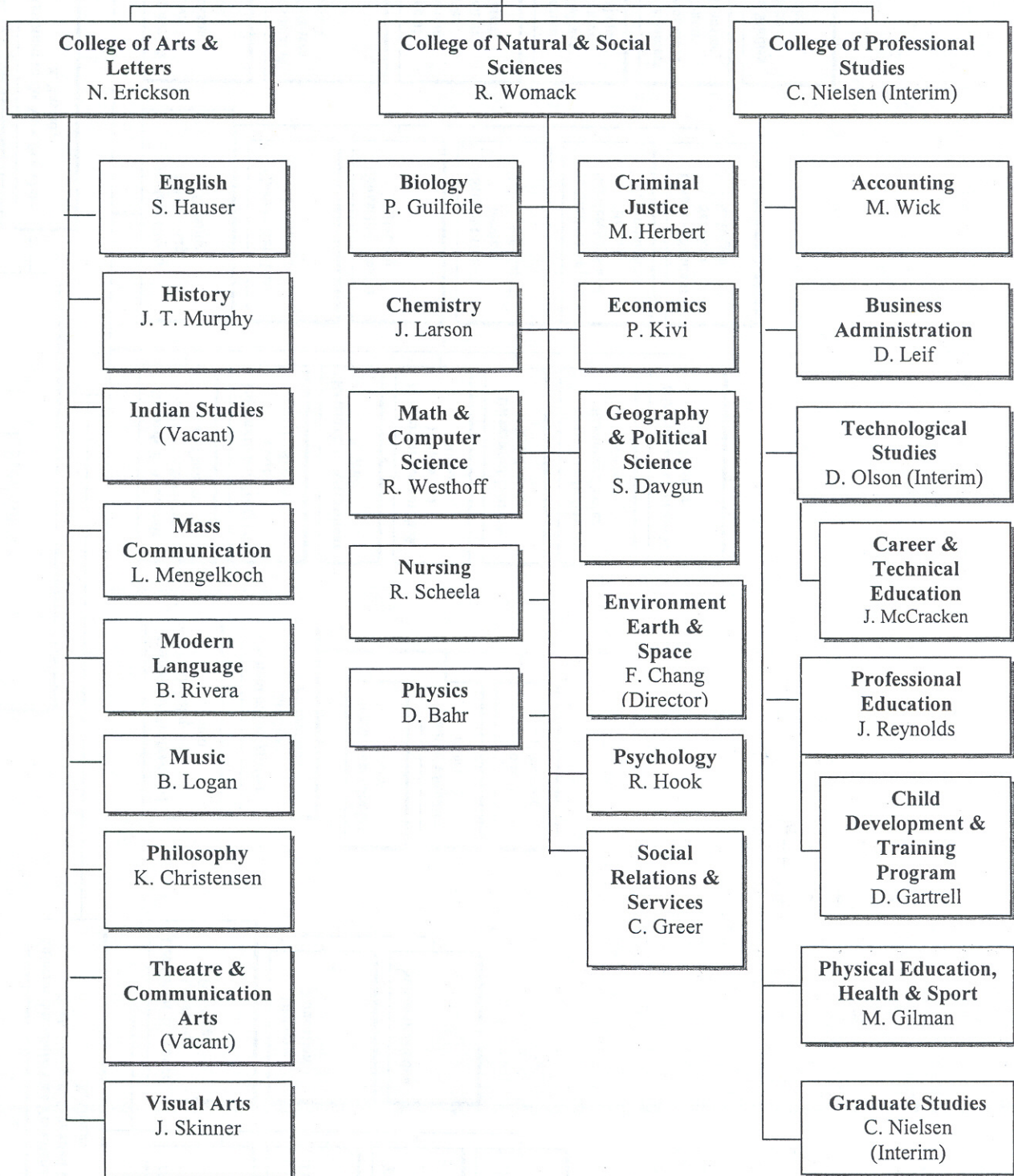
7/17/06



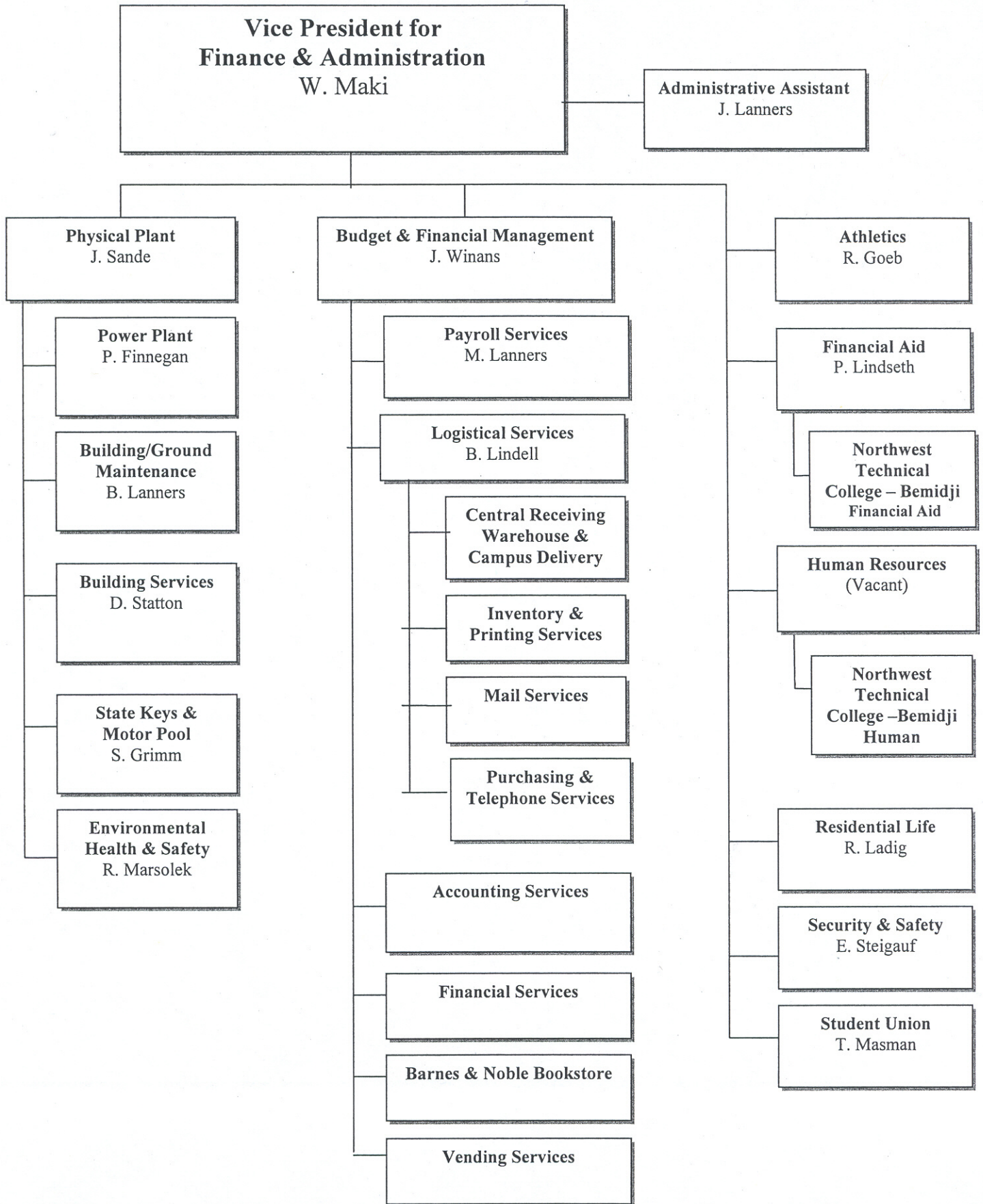
7/17/06



**Provost and Vice President for Academic & Student Affairs**  
J. Fredrickson



7/17/06







**BEMIDJI**  
STATE UNIVERSITY

Bemidji, Minnesota 56601

**MINNESOTA STATE COLLEGES AND UNIVERSITIES**  
**System Policy - Chapter 1 – System Organization and Administration**  
**Section B – Equal Education and Employment Opportunity**  
**Policy 1B.1 Nondiscrimination in Employment and Education Opportunity**

---

**Part 1. Policy Statement.** Minnesota State Colleges and Universities is committed to a policy of nondiscrimination in employment and education opportunity. No person shall be discriminated against in the terms and conditions of employment, personnel practices, or access to and participation in, programs, services, and activities with regard to race, sex, color, creed, religion, age, national origin, disability, marital status, status with regard to public assistance, or sexual orientation. In addition, discrimination in employment based on membership or activity in a local commission as defined by law is prohibited.

Harassment on the basis of race, sex, color, creed, religion, age, national origin, disability, marital status, status with regard to public assistance, or sexual orientation is prohibited. Harassment may occur in a variety of relationships, including faculty and student, supervisor and employee, student and student, staff and student, employee and employee, and other relationships with persons having business at, or visiting the educational or working environment.

This policy is directed at verbal or physical conduct that constitutes discrimination /harassment under state and federal law and is not directed at the content of speech. In cases in which verbal statements and other forms of expression are involved, Minnesota State Colleges and Universities will give due consideration to an individual's constitutionally protected right to free speech and academic freedom. However, discrimination and harassment are not within the protections of academic freedom or free speech.

The system office, colleges, and universities shall maintain and encourage full freedom, within the law, of expression, inquiry, teaching and research. Academic freedom comes with a responsibility that all members of our education community benefit from it without intimidation, exploitation or coercion.



This policy shall apply to all individuals affiliated with Minnesota State Colleges and Universities, including but not limited to, its students, employees, applicants, volunteers, agents, and Board of Trustees, and is intended to protect the rights and privacy of both the complainant and respondent and other involved individuals, as well as to prevent retaliation or reprisal. Individuals who violate this policy shall be subject to disciplinary or other corrective action.

This policy supersedes all existing system, college, and university non-discrimination policies.

## **Part 2. Definitions.**

**Subpart A. Consensual Relationship.** A sexual or romantic relationship between two persons who voluntarily enter into such a relationship. Employees who are members of the same household should also refer to the Board of Trustees Nepotism policy 4.10.

**Subpart B. Discrimination.** Discrimination is defined as conduct that is directed at an individual because of his or her protected class and that subjects the individual to different treatment by agents or employees so as to interfere with or limit the ability of the individual to participate in, or benefit from, the services, activities, or privileges provided by the system or colleges and universities or otherwise adversely affects the individual's employment or education.

**Subpart C. Discriminatory harassment. Discriminatory** harassment is defined as a verbal or physical conduct that is directed at an individual because of his or her protected class, and that is sufficiently severe, pervasive, or persistent so as to have the purpose or effect of creating a hostile work or educational environment.

**As required by law, Minnesota State Colleges and Universities has further defined** sexual harassment as a form of sexual discrimination which is prohibited by state and federal law. Sexual harassment is defined as unwelcome sexual advances, requests for sexual favors, sexually motivated physical conduct, and other verbal or physical conduct of a sexual nature when:

1. Submission to such conduct is made either explicitly or implicitly a term or condition of an individual's employment or education, evaluation of a student's academic performance, or term or condition of participation in student activities or in other events or activities sanctioned by the college or university; or
2. Submission to or rejection of such conduct by an individual is used as the basis for employment or academic decisions or other decisions about participation in student activities or other events or activities sanctioned by the college or university; or

3. Such conduct has the purpose and effect of threatening an individual's employment; interfering with an individual's work or academic performance; or creating an intimidating, hostile, or offensive work or educational environment.

**Subpart D. Employee.** Minnesota State Colleges and Universities personnel include all faculty, staff, administrators, teaching assistants, graduate assistants, residence directors and student employees.

**Subpart E. Protected Class.** Protected class for the purpose of this policy means that discrimination and harassment in employment and education are prohibited on the basis of: race, sex, color, creed, religion, age, national origin, disability, marital status, status with regard to public assistance or sexual orientation. In addition, membership or activity in a local human rights commission is a protected class in employment.

**Subpart F. Retaliation.** Retaliation includes, but is not limited to, intentionally engaging in any form of intimidation, reprisal or harassment against an individual because he or she made a complaint under this policy or assisted or participated in any manner in an investigation, or process under this policy, regardless of whether a claim of discrimination or harassment is substantiated; or associated with a person or group of persons who are disabled or are of a different race, color, creed, religion, sexual orientation or national origin. Retaliation may occur whether or not there is a power or authority differential between the individuals involved.

**Subpart G. Sexual harassment and violence as sexual abuse.** Under certain circumstances, sexual harassment or violence may constitute sexual abuse according to Minnesota law. In such situations, the system office and colleges and universities shall comply with the reporting requirements in Minnesota Statutes Section 626.556 (reporting of maltreatment of minors) and Minnesota Statutes Section 626.557 (Vulnerable Adult Protection Act). Nothing in this policy will prohibit the system office or any college or university from taking immediate action to protect victims of alleged sexual abuse. Minnesota State Colleges and Universities 1B.3 Sexual Violence Policy addresses sexual violence.

**Subpart H. Student.** "Student" means an individual who is:

1. admitted, enrolled, registered to take or is taking one or more courses, classes, or seminars, credit or noncredit, at any System college or university; or
2. between terms of a continuing course of study at the college or university, such as summer break between spring and fall academic terms; or
3. expelled or suspended from enrollment as a student at the college or university, during the pendency of any adjudication of the student disciplinary action.

**Part 3. Consensual Relationships.** An employee of Minnesota State Colleges and Universities shall not enter into a consensual relationship with a student or an employee over whom he or she exercises direct or otherwise significant academic, administrative, supervisory, evaluative, counseling, or extracurricular authority or influence. In the event a relationship already exists, each college and university and system office shall develop

a procedure to reassign evaluative authority as may be possible to avoid violations of this policy. This prohibition does not limit the right of an employee to make a recommendation on personnel matters concerning a family or household member where the right to make recommendations on such personnel matters is explicitly provided for in the applicable collective bargaining agreement or compensation plan.

**Part 4. Retaliation.** Retaliation as defined in this policy is prohibited in the system office, colleges and universities. Any individual subject to this policy who intentionally engages in retaliation shall be subject to disciplinary or other corrective action as appropriate.

The chancellor shall establish procedures to implement this policy. The nondiscrimination in employment and education opportunity policy and procedures of colleges and universities shall comply with Policy 1B.1 and Procedure 1B.1.1.

---

*Date of Implementation: 09/20/94*

*Date of Adoption: 09/20/94*

*Date and Subject of Revision:*

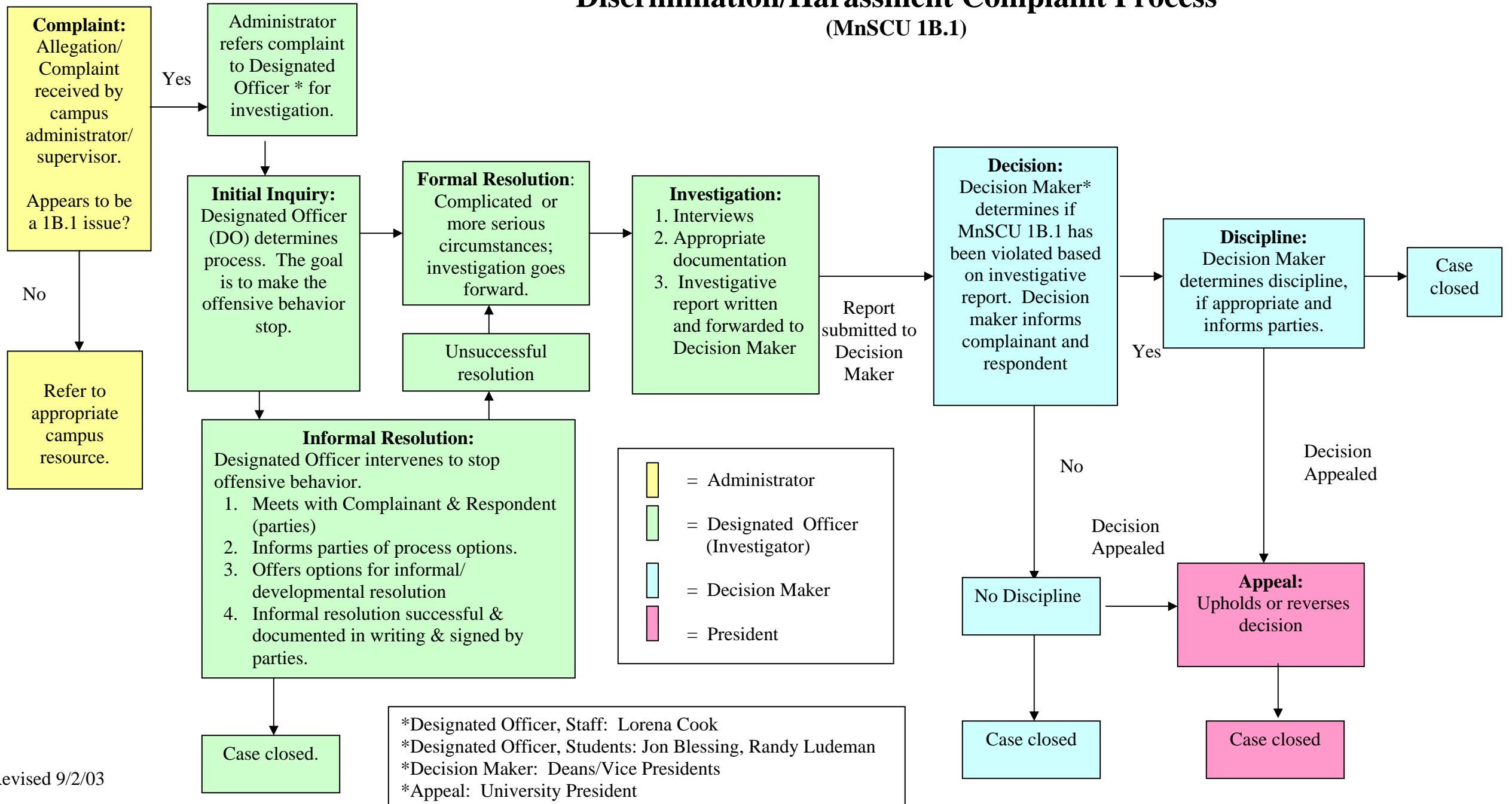
*6/21/06 – Amended policy to streamline and clarify language. Part 3 was amended to prohibit relations between employees and students or employees over whom the employee exercises direct or significant authority or influence. Amendments do not take effect until November 1, 2006*

*12/20/95 Added everything after the first paragraph.*

# Bemidji State University

## Discrimination/Harassment Complaint Process

(MnSCU 1B.1)



BEMIDJI STATE UNIVERSITY  
POLICY ON FILLING UNCLASSIFIED POSITIONS

Bemidji State University affirms its commitment to provide equal employment opportunities in accordance with law without regard to race, religion, color, national origin, sex, age, marital status, disability, creed, status with regard to public assistance, membership or activity in a local commission, sexual orientation, or inclusion in any other group or class against which discrimination is prohibited by Title VII of the Civil Rights Act of 1964, Title IX of the Education Amendments of 1972, Chapter 363 of Minnesota Statutes and other applicable State or Federal Laws.

Consistent with this Policy, the principle of equal opportunity shall govern all activities at Bemidji State University, including hiring, promotion, admission, and participation in all other facets of university life.

Further, the University commits itself to an advertising procedure that shall include special efforts to reach qualified underrepresented group candidates.

Unclassified Vacancy Filling Procedure

The following procedures identify normal minimal requirements for advertising all unclassified vacancies:

I) Procedure

A) Tenure Track Positions-

- 1) All tenure track IFO positions and positions greater than MSUAASF Range C or Managerial Range 2 shall be advertised nationally. The application deadline shall be a minimum of four (4) weeks from the date of the first published advertisement of the vacancy. The supervisor shall prepare an advertising plan for submission to and approval by the respective dean or vice president and the University Affirmative Action Officer. The plan shall include placement in appropriate publications/entities from the following list:

- throughout the MnSCU System
- Chronicle of Higher Education
- 228 Select Colleges and Universities (per attached list)
- Regional Job Services Network
- Ourselves (Minnesota Chippewa Tribe Newsletter)
- The Pioneer (Bemidji) (Group/Summary Advertising)

- One publication with a significant distribution rate to underrepresented groups
- The primary publication(s) recognized by the profession

2) All MSUAASF probationary positions up to and including Range C, and Managerial Ranges 1 & 2 shall be advertised regionally. The application deadline shall be a minimum of four (4) weeks from the date of the first published advertisement of the vacancy. The supervisor shall prepare an advertising plan for submission to and approval by the respective vice president and the University Affirmative Action Officer. The plan shall include placement in appropriate publications/entities from the following list:

- throughout the MnSCU System
- Star Tribune, newspaper of the Twin Cities
- 51 Regional Colleges and Universities (Minn., Wisc., Iowa, No. Dak., So. Dak.)
- Regional Job Services Network
- Ourselves (Minnesota Chippewa Tribe Newsletter)
- The Pioneer (Bemidji) (Group/Summary Advertising)
- One publication with a significant distribution rate to underrepresented groups
- The primary publication(s) recognized by the profession

B) Non-Tenure Track Positions - Per contract, this item is no longer applicable.

C) Fixed-Term/Temporary Positions

All fixed term and temporary positions shall be advertised locally. The application deadline shall be a minimum of two (2) weeks from the date of the first published advertisement of the vacancy. The supervisor shall prepare an advertising plan for submission to and approval by the respective dean or vice president and the University Affirmative Action Officer. The plan shall include placement in appropriate publication(s)/entities from the following list:

- throughout the MnSCU System
- Local Job Services Office
- Ourselves (Minnesota Chippewa Tribe Newsletter)
- The Pioneer (Bemidji) (Sun., Mon., Tues. Editions)

D) Emergency/Short Term Vacancies

Vacancies created by the unexpected separation of an employee or caused by factors beyond the control of the University shall be advertised locally. Positions can be filled up to the remainder of the academic year. The permanent filling of that position should be advertised within an appropriate timeline. The application deadline shall be a minimum of

seven (7) calendar days from the date of the first published advertisement of the vacancy.  
Means of advertising shall be:

- throughout the MnSCU System
- Ourselves (Minnesota Chippewa Tribe Newsletter)
- The Pioneer (Bemidji ) (and two (2) consecutive days)

II) Other Guidelines:

- A) Any position may be filled at a lower appointment status than at which advertised but may not be filled at a higher status.
- B) \*Positions advertised at a given appointment status and filled at a lower status may be continued at the original status without readvertising.
- C) Positions filled at the appointment status at which advertised must be readvertised to fill at a higher status.
- D) Candidates selected through a selection process including advertising of the vacancy may negotiate salary. Persons offered continuing appointments are bound by the terms of their respective bargaining unit agreements.
- E) The University President may, after conferring with the Equal Employment Opportunity Officer and the Affirmative Action Officer, set aside these provisions for the following reasons:

- 1) When adequate timelines beyond the control of the University make it inappropriate to utilize the normal advertising procedures.
- 2) Set aside or appropriately alter these procedures when:

s/he is making a promotion consistent with the University's commitment to affirmative action principles;

s/he is making a (lateral) transfer when it appears to the President that the interests of the University will be better served by placing a current employee into an existing or developing position of similar ranking in the same bargaining unit for which such employee has demonstrated skills or qualifications. Ensuing vacancies created by a lateral transfer shall be advertised in the manner indicated by the advertising procedure.

\* Subject to the respective bargaining unit agreement language limitations.

- F) The Deans or Administrative Heads are directed to develop advertising plans which include advertising in publications designed to reach underrepresented groups.

- G) The Deans or Administrative Heads are directed to develop advertising plans which also include advertising in publications specific to the discipline of the vacancy being advertised.

### III) Contractual Considerations

#### A) IFO/SUB Agreement

##### 1) Article 19 (Notice of Vacancies)

"Notice of any vacancies in the Minnesota State University System shall be made known to the faculty by means of posting on bulletin boards designed for such purposes and shall be included in the University/President's newsletter and shall be sent to the IFO simultaneously with any other publication of the vacancies. Notification to faculty who are not successful applicants shall be sent prior to the announcement of the name of the successful applicant.

##### 2) Article 21 (Appointment of Faculty), Section D (Appointment), Subdivision 4 (Probationary Appointments), Paragraph b.

"When the administration decides to fill a probationary position within a department, a notice of vacancy shall be prepared according to normal university procedures. When the notice of vacancy is approved by the administration, non-tenure track faculty who have served 3 or more FTE years in that department may apply for that position. Before commencing the formal search to fill the position, the department shall review all such applications from eligible non-tenure track applications.

#### B) MSUAASF/SUB Agreement

##### 1) Article 19 (Notice of Vacancies & Transfer)

###### Section A. (Notice of Vacancy)

"Any vacancy within the bargaining unit shall be made known, simultaneously with any other publication of the vacancy, to the employees, by means of postings on the designated bulletin boards. The Association President and the Campus Association President shall receive copies of such vacancy announcements.

###### Section B. (Transfer)



"The Employer may appoint members of the bargaining unit to positions excluded from the bargaining unit. However, no employee shall be required to accept such appointment. Employees shall neither lose nor continue to accrue benefits provided to employees in this bargaining unit because of, or during, the period of any appointment to a position outside of this bargaining unit.

#### IV) Definitions

-National Advertising - Advertising to occur throughout the U.S.  
(Circulation area of the Chronicle of Higher Education)

-Regional Advertising - Advertising to occur within Minnesota, North Dakota, South Dakota, Iowa and Wisconsin (Circulation area of the Minneapolis Sunday Tribune)

-Local Advertising - Advertising to occur within Beltrami, Clearwater, Hubbard and Cass Counties [Circulation area of the Pioneer (Bemidji)]

-Reassignment vs. Vacancy - additional duties assigned to a position will be determined to be a "reassignment" rather than a vacancy if the duties assigned comprise less than 50% of the total responsibilities of the position and if another vacancy is not created by the assignment of those duties.

**SUMMARY AND CHECKLIST  
FOR  
FILLING UNCLASSIFIED VACANCIES**

**A. Initial Steps**

- \_\_\_\_\_ 1. Before preparing a vacancy packet, the Dean or Administrative Head shall receive written approval from the appropriate Vice President to begin the search.
- \_\_\_\_\_ 2. Design or revise the position description as needed, including any specific expectations for future education or work assignments.
- \_\_\_\_\_ 3. Determine Bargaining Unit assignment in consultation with the Dean/Administrative Head and/or the Human Resources Office.
- \_\_\_\_\_ 4. Prepare a vacancy notice.
- \_\_\_\_\_ 5. Prepare a listing of criteria to be used in evaluating candidates prior to the interview.
- \_\_\_\_\_ 6. Prepare interview questions. (The areas to be explored and the questions to be developed must relate to the criteria for the position.)
- \_\_\_\_\_ 7. Prepare a rating sheet for evaluating candidate's performance in interviews.

|  |
|--|
| STEPS 5, 6, AND 7 MAY BE COMPLETED WHILE THE POSITION IS BEING ADVERTISED BUT <b><u>MUST BE COMPLETED</u></b> PRIOR TO THE FORMAL REVIEW OF APPLICANT'S FILES BY THE SEARCH COMMITTEE. |
|--|

- \_\_\_\_\_ 8. Prepare advertising plan. The Human Resources Office will assist you in this task.
- \_\_\_\_\_ 9. Submit vacancy packet to the Dean or Administrative Head to initiate the approval process. The vacancy packet must include:
  - a. detailed position description
  - b. vacancy notice
  - c. advertising plan
  - d. bargaining unit

**B. Steps Taken After Approval of Affirmative Action Officer**

- \_\_\_\_\_ 10. Identify and contact members of search committee. See hiring guidelines for specific University requirements for membership of search committees and also the requirements for bargaining unit representation. Normally, the



departmental unit/administrative head will select committee members and may request assistance from the Affirmative Action Officer in identifying protected group persons to serve on the committee. The search committee must prepare a listing of criteria to be used in evaluating candidates prior to the interview and the interview questions if they have not already been prepared. These materials must be submitted to the Affirmative Action Officer for approval.

- \_\_\_\_\_ 11. Accept no applications after the application deadline. In some cases, positions may be advertised as "Open until filled". (If initial contact was made prior to deadline, support materials may be accepted.)
- \_\_\_\_\_ 12. Contact applicants to acknowledge candidacy; include position description and other pertinent job-related information, including the Affirmative Action Form.
- \_\_\_\_\_ 13. Adhere to the initial qualifications required in the vacancy notice. (If those requirements are reduced, the position must be readvertised.)
- \_\_\_\_\_ 14. After the initial screening is complete, submit all application materials along with the committee's recommendations for the list of finalists to the Affirmative Action Officer for pre-interview review. The screening committee shall provide an explanation and rationale for its recommendation with a rating sheet for all applicants. Normally five working days will be needed for this review. As a result of the review process, the Affirmative Action Officer will not remove but may add additional candidates, who are protected group persons, to the pool of finalists. Prior to any such addition to the pool of finalists, the Affirmative Action Officer will discuss the matter with the Search Committee to determine the best qualified protected group candidates. The Affirmative Action Officer, in consultation with the appropriate Dean, may decide to extend or terminate the search if the Affirmative Action goals are not being met by the current pool of candidates. A decision to terminate or extend the search may be appealed to the President by a search committee.
- \_\_\_\_\_ 15. The search committee will propose via a written memorandum which candidates it wishes to interview from among the list of finalists for approval of the Affirmative Action Officer. The Affirmative Action Officer must approve which finalists are to be interviewed. No finalists may be interviewed without the prior approval of the Affirmative Action Officer. The Affirmative Action Officer consults with the respective Vice President on the pool of finalists in reference to the goals of each department. If a search is terminated at this point, the Affirmative Action Officer will discuss with the search committee the reasons for the termination.
- \_\_\_\_\_ 16. Search committee chair schedules interviews.



- \_\_\_\_\_ 17. After the committee has completed the interviews, a memo indicating the committee's recommendations and addressing the strengths and weaknesses of each candidate, as they relate to the job description, should be given to the respective Dean/Administrative Head and Vice President. The committee makes a preliminary selection of a candidate to be hired.
- \_\_\_\_\_ 18. The respective Dean/Administrative Head makes a recommendation and forwards a written rationale for that decision with the Faculty Appointment Form to the area Vice President with copies to the Affirmative Action Officer. The Affirmative Action Officer shall make an independent recommendation to the appropriate Vice President concerning the proposed appointment.
- \_\_\_\_\_ 19. The respective Vice President approves/disapproves the Dean's/Administrative Head's recommendation. This recommendation is forwarded, with the Faculty Appointment Form, to the Human Resources Office with copies to the Affirmative Action Office.
- \_\_\_\_\_ 20. After a final selection has been made by the respective Vice President, the finalist's application materials should be submitted to the Equal Employment Officer for review and approval/disapproval. If approved, the packet is forwarded to the Human Resources Office; if disapproved, a rationale is attached and the packet is returned to the area Vice President.
- \_\_\_\_\_ 21. Issuance of employee contract:
  - a. Area Vice President will notify Dean/Administrative Head of final approval of selection.
  - b. Dean/Administrative Head will contact the candidate; if candidate accepts the contract, the Human Resources Office will issue a contract.

This is intended to be a summary and a checklist for filling unclassified positions. Please see the Affirmative Action Guidelines for complete details on filling of positions.

**AT NO POINT IN THE SEARCH PROCESS SHALL VERBAL OFFERS BE MADE EXCEPT BY THE DEAN/ADMINISTRATIVE HEAD AFTER APPROVAL BY THE APPROPRIATE VICE PRESIDENT.**

Rev.: April 3, 2003